



TAMPER MKI, II, III, IV

2024

**PARTS & ASSEMBLIES
CATALOG**



**REAL SOLUTIONS FOR
RAIL MAINTENANCE OF WAY**

(217) 268-5110
sales@rrcri.com
www.rrcri.com

About Us

Over 40 years ago, we decided to start a business geared to answering the needs of the rail maintenance-of-way industry. Today we continue to be a family business boasting exceptional customer care, premium quality parts, and unique custom solutions.

At Railroad Component Rebuilds, Inc., we find a way to make parts better. We listen to you, help determine what you need, and get it to you as soon as possible.

We know that time is money in the railway industry. We offer on-the-shelf quality parts that are ready to ship today, including premium components and assemblies for rail tampers, spike puller heads, quality carts, pre-gaugers, and more.

We work with maintenance-of-way machines that need to be rebuilt, repaired, or require new assemblies or parts. And we can re-engineer according to your needs.

Durability, efficiency, and safety are at the center of every RCR assembly, and we strive to be unbeatable at perfecting and delivering MOW parts. So contact us today and let us help you find the perfect answer to your maintenance-of-way needs!



Eric Headrick, Founder and CEO, and his family



205 N. Chestnut
P.O. Box 404
Arcola, IL 61910
(217) 268-5110
sales@rrcri.com
www.rrcri.com



TABLE OF CONTENTS

Mark IV Tamper9

Parts for Tamper MKI, II, III, IV

Workheads	13
Workhead Frames	19
Combo Clamps	37
Hydraulics/Pneumatics	49
Electrical	73
Surfacing/Lining	91
Drivetrain.....	107
Kits.....	117
Miscellaneous	137

Jackson 6700, PD, 3300143

Spike Puller Assemblies145

Pre-Gaugers147

Quality Carts149

Index.....151



TAMPER MKI, II, III, IV



At RCR, we specialize in rebuilt hydraulic workhead assemblies and parts for MKIV Tamperers.

The Mark IV is a robust, heavy-duty rail tamper that takes on tremendously arduous work on a daily basis. When repair or maintenance is due and you need parts or rebuilt assemblies to keep your MKIV running smoothly and efficiently, we've got your back.

We take your old workhead and replace the ductile iron housing with a steel housing. We rebuild with new, forged steel vibrator shafts that will work harder and last longer. Our customized, heavy-duty workheads will ensure long-term performance, increase safety, and significantly extend your budget.

Our shelves are always stocked with premium parts for your MKIV and are ready to ship the same day.

We also offer parts for the Mark I, Mark II and Mark III Tamperers. Just give us a call!

(217) 268-5110 | sales@rrcri.com | www.rrcri.com

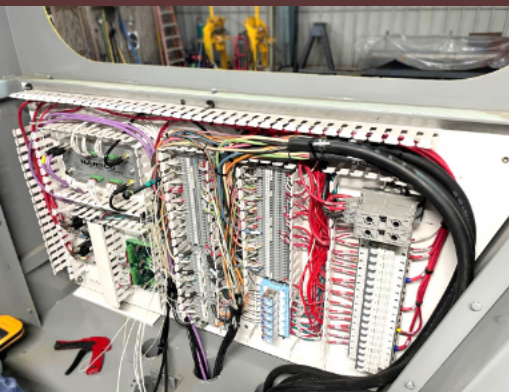
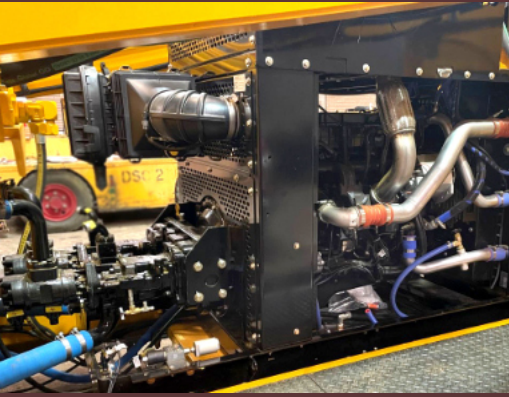




Needing an assembly rebuild or parts for your Mark IV Tamper?

Look no further. We have everything you need, from vibrators and workhead frames to bushings and bolts!

And we have parts for MKI, II, and III too.



COMPLETE MACHINE REBUILD MARK IV TAMPER



HEAVY
DUTY



EXTENDED
DURABILITY



LESS
MAINTENANCE



MADE
IN USA



READY
TO SHIP



MARK IV

HEAVY DUTY, BETTER-THAN-NEW REBUILD

SPECIFICATIONS

- Weight: 60,000 lbs.
- Max travel: 30 MPH
- Jupiter II Control System with Surface Fit
- System V Lining System
- Climate-Control Cab
- Combo Clamp System
- Re-Designed Alarm System
- Main Frame: High-Strength Steel, Boxed Beam, Welded Construction
- Wheel & Axles: 28" Single-Wear Solid-Steel Wheels on Heavy-Duty Solid Railroad-Type Axles
- Hydraulic Drive Train: Cushman, 2-Speed Gear Boxes on Each Axle
- High-Pressure Hydraulic Filter Kit
- Suspension: Trunnion-Mounted Front Axle & Rear Axle Elastomeric Suspension
- Engine: Brand New Cummins QSB Tier 4 6.7L, 6-Cylinder Liquid Cooled, Turbocharged & Charge Air Cooled Diesel, 250BHP @ 2200 RPM
- Hydraulic System: New Variable Displacement Piston Pumps, Fixed Displacement Gear Pumps, 24 VDC Solenoid Operated Valves
- Air System: Engine Mounted Air Compressor, up to 28 SCFM, Nominal Operation Pressure 100PSI
- Tamping Units: 4 Heavy-Duty Vibrators Drive 16 Abrasion-Resistant Tamping Tools with Transversion Workheads
- Leveling System: Improved Harsco Rail's Delta System, Single Infrared Projector, Non-Adjustable Shadow Board, Double Barrel Infrared Receivers Mounted on Rapid Response Actuators & Inclinator for Accurate Cross Level
- Electrical: 24-VDC System with 175-A Alternator

Call for Availability on Our MKIV Tampers.

REBUILT & UPGRADED MKIV TAMPERS

Machine stripped to frame, sand-blasted & inspected for cracked welds & other deficiencies. The conversion to hydraulic drive (HD) transmission requires complete replacement of the frames around the transmissions. Replacement structural weldments are furnished by Harsco Rail.

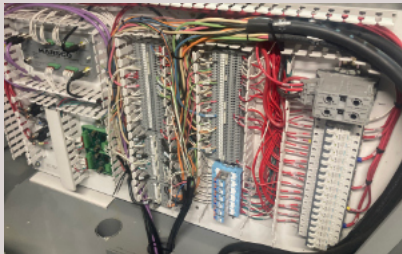
Warranty: One-Year Warranty on all parts through Harsco Rail and Cummins.



CALL TODAY TO ORDER YOUR NEW MARK IV!
(217) 268-5110

COMPLETELY NEW JUPITER II CONTROL SYSTEM

The Jupiter Control System is 100% new construction including new factory cables and CAN modules furnished by Harsco Rail.



FULLY INTEGRATED CAB

Cab has been removed and retrofitted to incorporate current model Mark IV features, such as a new operator station, updated dash, headliner and cab lighting.



NEW HYDRAULICS

All new hydraulic components (valves and hoses). Genuine Harsco hoses with Harsco's part numbers.

MKI, II, III, IV WORKHEADS





**MKIV Heavy-Duty Steel
Hydraulic Vibrator**
RC0607VAAEXS (Steel)
R5027624EXS (Steel)

PREMIUM FORGED STEEL REBUILDS



MKI, II, III Electric Vibrator
RV68336-02EX
RE-2010512-0-02EX



STM Vibrator
R0-201052-0-05

**Tamping Tool
Remover**
R217512



Tamping Tools (Left and Right)
MKI, II, III, IV
RJK-215L / RJK-215R



1/4 x 3/8 x 3" Key
MKI, II, III, IV
RJK-215-KW



Shield
MKI, II, III, IV
R0-1303686-0-01



**MKIV Hydraulic Motor Bracket /
Adapter Weldment MKIV**
RC2307VAA



**MKIV Hydraulic Vibrator
Motor Rex Roth**
R4012702



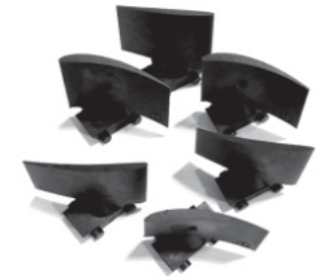
Square Washer
MKI, II, III, IV
RJK-215-SW



Vibrator Connecting Pin 1 x 3 5/8"
MKI, II, III, IV
RZ68440-02



MKIV Fan Coupler with Fan
RD5288Y01S



MKIV Hydraulic Vibrator Fan Blades
RC2339Y01

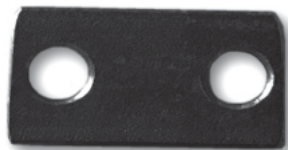
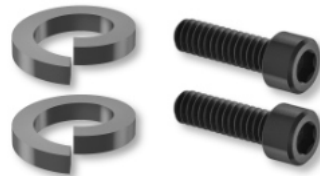


Plate Lock
MKI, II, III, IV
RZ688521



1/4" Socket Head with Lock Washer
MKI, II, III, IV
RA0043031



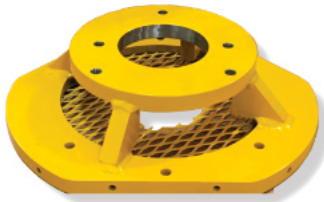
**MKIV Fan Coupling
Assembly without Fan**
RD5288Y01



Shroud
MKI, II, III, IV
R0-1303949-0-01

Need a workhead rebuild?

Our heavy-duty steel housing greatly improves the performance and extends the life of your tamper's workheads. And our new, forged vibrator shafts are all made in the USA. Call us today!



STM Motor Bracket
R216059-2



Fan for Electric Vibrator
MKI, II, III
RY104606A



Coupler with Fan for STM
R0-3017-0-01



Stator Rewound and Notched
(Exchange with Rebuildable Core)
for Electric Workhead MKI, II, III
RE-1404809-0-01



STM Hydraulic Motor
R0-3321014-0-02



Fan Cover MKI, II, III
RY56701A



Vibrator Housing Bronze Bushing
RB7487Y01



Vibrator Housing Steel Bushing
RB487Y01S

MKI, II, III, IV WORKHEAD FRAMES





Rebuilt Heavy-Duty MKIV Workhead Frame Assembly Left
R5055209_B

Complete with All New (Heavy-Duty Workhead Support (New Style), Heavy-Duty Support Arms, Rear Slider, Heavy-Duty Frame, Guide Rods and Squeeze Cylinders) and a Rebuilt Carrier. Transducer or String Pot (NOT INCLUDED). (Exchange)



Rebuilt Heavy-Duty MKIV Workhead Frame Assembly Right
R5054725_B

Complete with All New (Heavy-Duty Workhead Support (New Style), Heavy-Duty Support Arms, Rear Slider, Heavy-Duty Frame, Guide Rods and Squeeze Cylinders) and a Rebuilt Carrier. Transducer or String Pot (NOT INCLUDED). (Exchange)



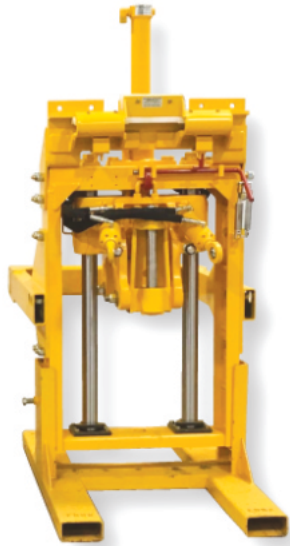
MKIV Workhead Frame Assembly Complete - Right
RC0606VAA-R/H
RC0606VAA-R/H-EX (Exchange)

Excludes Transducer and String Pot. Please specify when ordering.



Universal Workhead Frame Fits Left or Right/ String Pot or Transducer

Left Complete Frame - R5055209
Right Complete Frame - R5054725
Bare HD Universal Frame - R5021173



MKIV Workhead Frame Assembly Complete - Left
RC0606VAB-L/H
RC0606VAB-L/H-EX (Exchange)

Excludes Transducer and String Pot.
Please specify when ordering.



Rebuilt Heavy-Duty / HST Workhead Frame Assembly Right/Left
RC0606VAA-R/H-EX
RC0606VAB-L/H-EX

Complete with All New (Heavy-Duty Support Arms, Rear Slider, Heavy-Duty Frame, Guide Rods) and a Rebuilt Carrier. MKIV, Squeeze Cylinder, Limit Switch, Excludes Transducers/String Pot. (Exchange)



Support Arm New Style MKIV (Left) Heavy-Duty
R4028347



Heavy-Duty Workhead Frame with Limit Switch Panels or String Pot
RA5287VAAL (Left)
RA5287VAAR (Right)
HD Transducer -
RA5287VAA-HD (Right)
RA5287VAB-HD (Left)



Support Arm New Style MKIV (Right) Heavy-Duty
R4028349



Heavy-Duty Support Arm MKIII
R0-2303363-0-03LHD (Left)
R0-2303363-0-04RHD (Right)



New Heavy-Duty Squeeze Cylinder
MKI, II, III, IV
RX68297U

1-piece forged rod, both ends machined to retain bearings with 1 snap ring retainer end and clevis end



Lift Cylinder MKIV
RB5761XAA



Lock Handle Spring
RL410848



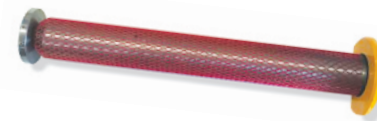
Lock Handle Lever
R0-1302117-0-01



Swivel Bracket
MKI, II, III, IV
RY684448-01



Hook (Workhead Lock)
MKI, II, III, IV
R0-1405505-0-01



Floating Vertical Pin with Grease Holes Top and Bottom
R4-2300189-0-01S



Floating Horizontal Pin with Nut & Washer MKI, II, III, IV
R4-2400264-0-01

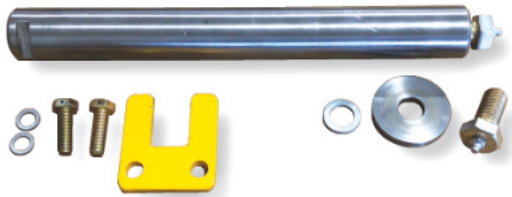


Workhead Air Lock Cylinder
RY767203-001



Workhead Air Lock Cylinder Assembly
RY767203-001ASY

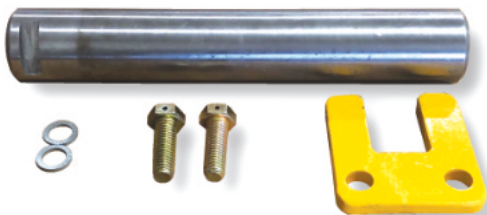
Includes Air Lock Cylinder and Clevis with 2 pins.



**Pivot Pin Kit for Vertical Pin
R5007907-KIT**

Item	RCR Part #	Part Description	Qty
A	R5007783	Pivot Pin	1
B	RH3948Y05	Disc Lock Washer	2
C	R5007905	1/2-13 UNC X 1-1/2" Hex Head Bolt	2
D	R5007872	Multi Rotation Keeper	1
E	RH3948Y04	Disc Lock Washer	1
F	R5007873	Pivot Pin Washer	1
G	R5007906	3/4 x 10 UNC 1-1/2" Hex Head Bolt	1

All parts can be sold separately.



**Pivot Pin Kit for Horizontal Pin
R5007782-KIT**

Item	RCR Part #	Part Description	Qty
A	R5007782	Pivot Pin	1
B	RH3948Y05	Disc Lock Washer	2
C	R5007905	1/2-13 UNC x 1-1/2" Hex Head Bolt	2
D	R5007872	Multi Rotation Keeper	1

All parts can be sold separately.

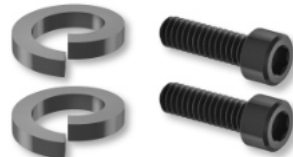
**New Heavy-Duty Squeeze Cylinder
MKI, II, III, IV
RX68297U**

1-piece forged rod, both ends machined to retain bearings with 1 snap ring retainer end and clevis end



We can customize a kit for you

If your team needs a tailored maintenance kit, just let us know. We will work with you to put together the best kit to suit your needs!



**1/4" Socket Head with Lock Washer
RA0043031**



**Plate Lock
MKI, II, III, IV
RZ688521**



**Vertical Pin Lock Plate
R3059110**



**Vibrator Connecting Pin 1 x 3 5/8"
MKI, II, III, IV
RZ68440-02S**



**Carrier Connecting Pin 1 x 4 1/8"
MKI, II, III, IV
RZ68439-01**



**Workhead Carrier with Stop Bolts & Carrier Bronze MKIV
(Rebuildable Exchange with MKIV Style Carrier)
Please specify right or left.
R0-2100706-0-01**



**Bearing COM16 Squeeze Cylinder
MKI, II, III, IV
RL420159**



**Concrete Steel Tie Squeeze Cylinders
RX7683628**



**MKI and MKII Carrier Rebuilt Exchange
RW68283-03-REX**



**Cushing Pad
MKI, II
RZ689173**



**Bronze Bushing (Carrier) with Wiper Seal & O-Ring
MKI, II, III, IV
RZ68287**



**Vibrator Carrier Distance Bushing
MKI, II, III, IV
RZ68288-01**



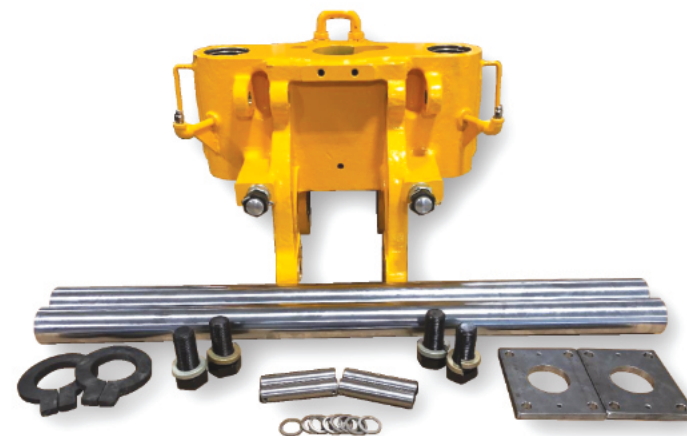
Wiper Ring (Carrier)
MKI, II, III, IV
RL40525



O-Ring (Carrier)
MKI, II, III, IV
RL40070



**Snap Ring
for Carrier Bushing**
RL40072



MKIII, IV Vibrator Carrier Kit
RE-2100706-0-01-K

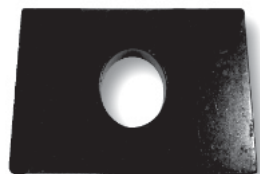
RCR Part #	Part Description	Qty
RE-2100706-0-01LEX or RE-2100706-0-01REX	Rebuilt Vibrator Carrier MKIII, IV with Stop Bolts and Carrier Bronze L/H or R/H - Exchange (please specify right or left)	1
R0-1404016-0-01	Guide Rod 2 1/2 OD x 41 3/8" Long MKIII, IV	2
RY68375-01	Lower Cushion Pad MKI, II, III, IV	2
R0-1404015-0-01	Lower Adjusting Plate MKIII, IV	2
RZ68439-01	Carrier Connecting Pin 1 x 4 1/8" MKI, II, III, IV	4
RZ682674	Squeeze Cylinder Spacer (Small) MKIII, IV	8
RL420984	Guide Rod Bolt 1 1/4-12 x 3" MKI, II, III, IV	4
RA0061021	1 1/4 Heavy Lock Washer	4



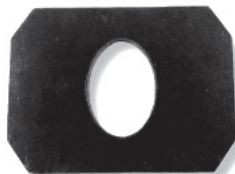
Stop Bolt with Bumper
MKI, II, III, IV
RZ68402-02



Carrier Bumper Bolt
MKI, II, III, IV
RD8009Y01



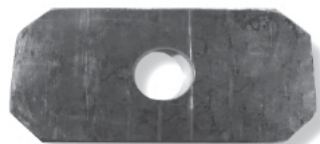
Upper Cushion Mount
MKII, III, IV
R0-1404045-1-01



Lower Cushion Mount
MKII, III, IV
R0-1404574-1-01



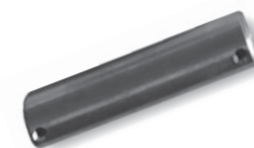
Retaining Plate C
MKI, II, III, IV
R0-1404046-1-01



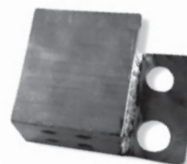
Lower Retaining Plate
MKI, II, III, IV
R0-1404575-1-01



**Squeeze Cylinder Spacer
(Small) MKIII, IV**
RZ682674



Carrier Connecting Pin 1 x 4 1/8"
MKI, II, III, IV
RZ68439-01



Squeeze Cylinder Manifold
MKI, II, III, IV
RY766772Y



Shock Mount Rubber
RZ766673-001



Oilers
RL40603



Workhead Rear Slider Assembly Complete
RC6577PAA



Shim Plate (C Type Rear Slider) MKIV Slotted
RC0701Y02-S



Shim Plate (Rear Slider) MKIII
RZ766844-002



Shim Support Block
RC0693X01



Rear Slide Wear Pad Support MKIII, IV
RC0692X01

Support Block Assembly Rear Slider 2 per Side MKIII, MKIV
RC0694XAA



Top Slider Pad Replacement Kit
R0-1304828-0-1S-KIT

RCR Part #	Part Description	Qty
R0-1304828-0-01S / RG0852YAA	Slide Pad - No Notch with Threaded Inserts MKI, II, III, IV	2
R0-1304826-0-01S	Stop Pad with Threaded Inserts (New Style) MKI, II, III, IV	2
RF00114	5/16" Drilled Bolt	12



Lock Pawl MKI, II, III, IV Complete
R0-1305837-0-01



Traverse Sprocket
R0-3625033-0-01 / RD8042Y01



Idler Sprocket for Traverse
RY10047



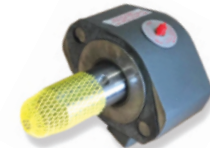
Idler Axle Pin for Traverse & Nut
RA4881Y01



Workhead Traverse Idler
RA4877XAA



Workhead Traverse Motor
RL411545



Workhead Traverse Load Adapter
R0-3624021-0-01



Rear Slider Kit for 1 Frame
RC0694XAA-KIT

RCR Part #	Part Description	Qty
RZ750978	1/2" Drilled Bolts	10
RA0061023	Heavy Duty 1/2" Lock Washer	10
RA0042024	Screw Allen FLT HD 1/2-13 x 1-1/4	5
RC0693X01	Shim Support Block	4
RC0694XAA	Support Block Assembly Rear Slider - 2 per Side MKIII, MKIV	2



Top Plate for Traverse Assembly
MKI, II, III, IV
R0-1305836-0-01



Bottom Plate for Traverse Assembly
MKI, II, III, IV
R0-1305840-0-01



Clevis Pin for Traverse Assembly
MKI, II, III, IV
R0-3015002-0-28



Single 60-1 Traverse Chain
10ft Sections with Master Link
R0-1302082-0-01 / RA1294Y01



Guide Bar for Traverse Assembly
R0-1305835-0-01



Shim for Top Plate
for Traverse Assembly
R0-1305839-0-01



Mounting Plate
R0-1305832-0-01



Traverse Link Plate (Bend)
R0-1202627-0-01



Traverse Link Plate
R0-1202626-0-01



Connecting Link
for a Traverse Chain
RL420309



Chain Tension MKI, II
RX710126



New Style Top Slider
Heavy-Duty Complete MKIV
(Left or Right)
Universal
R5047427



Traverse Lock Hydraulic Cylinder
MKI, II, III, IV
R0-3372001-0-01

Don't see something you're looking for?

Give us a call! We are constantly expanding our inventory and offering more parts and assemblies. We'll make sure you find what you need.



**Top Workhead Support Left MKIV
(Complete)**
RA1176VAAL-C

**Top Workhead Support Right MKIV
(Complete)**
RA1176VAAR-C



**Slide Pad Notched
MKIII, MKIV**
R0-1304827-0-01



**Slide Pad - No Notch
with Threaded Inserts
MKI, II, III, IV**
R0-1304828-0-01S

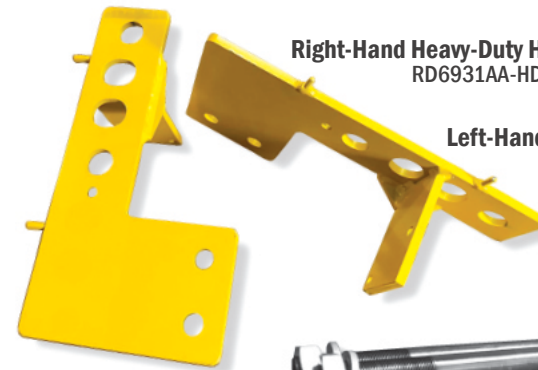


**Stop Pad with Threaded Inserts
(New Style) MKI, II, III, IV**
R0-1304826-0-01S /
RG0850YAA



Lock for Top Slider
RC9402Y01-KIT

Comes with RA0060018,
R0-3015001-0-35, RC9402Y01,
RL41005, RZ710103,
R0-3015001-13



Right-Hand Heavy-Duty Hose Bracket
RD6931AA-HD

Left-Hand Heavy-Duty Hose Bracket
RD6931AB-HD



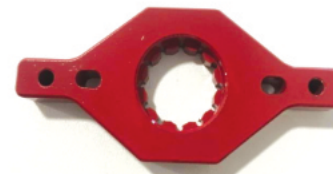
Lift Rod MKI, II
RZ682327



Guide Rod 2 1/3 OD x 39 3/4" Long MKI, II
RZ68372



Guide Rod 2 1/2 OD x 41 3/8" Long MKIII, IV
R0-1404016-0-01

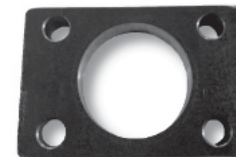


**12-Point Guide Rod Bolt Retainer
for Workhead Frame**
MKI, II, III, IV
R5110-268

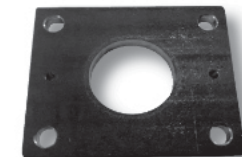


1 1/4 Heavy Lock Washer
RA0061021

**1 1/4 Guide
Rod Bolt**
RL420984



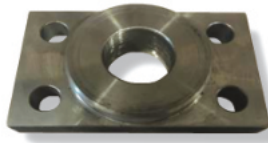
Workhead Adjusting Plate - Upper
MKI, II, III, IV
RZ68370



Workhead Adjusting Plate - Lower
MKIII, IV
R0-1404015-0-01



Lower Cushion Pad
MKI, II, III, IV
RY68375-01



Top Plate
RZ688595



Heavy-Duty Limit Switch
without Arm MKIII, IV
RL422907



String Replacement for
String Pot MKIV
RG5509Y01



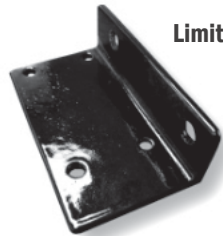
String Wheel for
String Pot MKIV
R201428



Limit Switch Arm - Short
MKI, II, III, IV
RL422908



Limit Switch Arm - Long
MKI, II, III, IV
RL422909



Limit Switch Bracket
MKIV
RA7105Y01



Limit Switch Jupiter MKIV
with M12 Connector
RH5963YAA



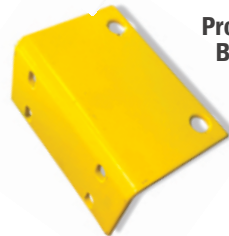
String Pot Mounting Bracket
MKIV
RG2801X01



Linear Transducer Magnet
R2006043



Workhead Proximity
Switch MKIV
RH5463XAA



Proximity Switch
Bracket MKIV
RB2455X01



Linear Transducer for MKIV
HD and Drones
R2006042

Magnet and Bracket sold separately.



String Pot 30" .024 String
(Non-Jupiter) MKIV
R0-3137013-0-13



String Pot 30" .024 String
(Jupiter) MKIV
R0-3137013-0-14



Weldment for Carrier
R5021207



Transducer Mount
Magnet MKIV
R5021216

MKI, II, III, IV COMBO CLAMPS

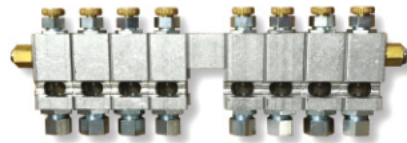


Workhead Lift Complete Assembly with Manifold RC9101VAA

RCR Part #	Part Description	Qty
R0-3333037-0-09	D05 Valve Assembly Squeeze Cylinder for MKIV / Direction Hook Valve for MKIV, Clamp Valve	2
R0-3333037-0-19	Right/Left Hand Hook Workhead Lift Valve MKIV	4
R21-0283	Manifold	1
	Long Bolts	20



Flow Regulator Valve
R0-3335012-0-01



Automatic Oiler
RB1657Y08



MKIV Hose Bracket 1 x 2 x 10 AL HS
R0-1101329-0-01S



MKIV Hose Bracket 1 x 2 x 4 1/2 AL HS
R0-1101325-0-09



Chain Guard
Right Side - RA1441X01
Left Side - RA1441X01





PREMIUM REBUILT COMBO CLAMPS



VME - Non-Jupiter

RA7608VAKEX

Rebuilt Combo Clamp Assembly with Carbide Wear Surfaces
(Exchange) MKIV

Jupiter

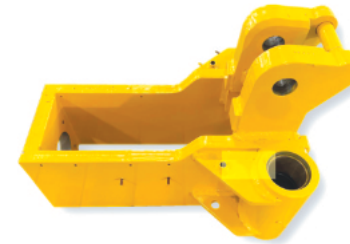
RA7608VAAEX

Rebuilt Combo Clamp Assembly with Carbide Wear Surfaces
(Exchange) MKIV



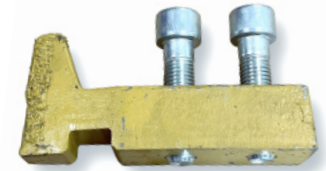
Complete Combo Clamp Rebuild Kit (Excludes Guide Rods) R105110

RCR Part #	Part Description	Qty
RL40705	Spherical Bearing for Bias, Liner, Jack Cylinder	4
RA1072Y01	Plastic Washer	2
RL424936	Spacers	12
R0-3013001-0-05	Snap Rings	4
RA4823Y01	Hook Extend Cylinder Pins	2
R0-3095002-0-11	Slew Cylinder Pin	4
RA6030Y02	Steel Bushing Combo Clamp 1.5" ID	2
R0-3019004-0-13	Spacer	6
R0-3019004-0-01	Insulating Disc	2
RL40931	Nut - Pin Roller, Small	2
RZ765375-001	Insulating Washer (Combo Clamp 1" ID) MKIII, MKIV	6
RZ767929-002	Insulating Spacers	2
RA1681YAA	Roller Assembly (Combo Frame Small) MKIII, MKIV	2
R0-2305761-0-01	Large Wheel Roller Combo	2
R0-3011001-0-78	Large Nut Pin Roller	2
RD6987X02	Pin Roller Large	2
R0-1203075-0-01	Insulating Plate	1
R424870	Snap Rings	4
R0-3652060-0-01	Hook Bushing	4
RA1856T04	Bushing	2
R0-1305728-0-01	Brass Carrier Box Combo Clamp 3"	8
RD6987X01	Pin Roller Combo Frame Small	2
RA1856T03	Bushing	4
RA0036341	Stop Bolt Combo MKIII	4
R0-3095004-0-01	Jack Cylinder Pin - Upper 1.5" OD MKIII, IV	2
RA6030Y04	Bushing Steel Combo Clamp	2
RA1856T05	Bushing	12
R0-3393001-0-05	Wiper Seal 3"	8
R0-3393001-0-06	Wiper Seal Large 4.5"	4
R0-1305774-0-01	Bias Cylinder Pivot Pin	1
R0-2305775-0-01	Pivot Pin Bias	1
R0-3015002-0-26	Liner Cylinder Pin	2
R0-3095002-0-09	Bias Pin MKIII, MKIV	1
R0-3093401-0-01	Jack Eye Pin Lower	2
RA6030Y05	Spacers	8
RA0056019	Jam Nut	4
RD7190T06	Washer/Spacer for Liner Cylinder	10
RA0060021	1" Flat Washer	20
RA0059012	1 1/2" Flat Washer	10
R0-3019004-0-08	2" Flat Washer	2
RZ683490	Washer	12
RA0059008	3/4" Flat Washer	12



Carrier Box
(Exchange Only with a Rebuildable Core)
RD6410WAB

Please specify left or right side.



Low Profile Rail Clamp
RJK-B6090Y02



Mark Rail Clamp Single Hook
RJK-197940-1



Combo Clamp Cover (Hook)
MKIII, IV
RA8288X01



Insulating Bushing
(Combo Clamp Carrier Box
1.5" Inside Diameter) MKIII, IV
RA1856T04



Steel Bushing
(Combo Clamp Carrier Box
1.5" Inside Diameter)
MKIII, IV
RA6030Y02



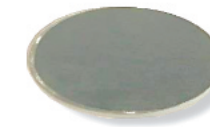
Insulated Spacer
1.5" Inside Diameter
MKIII, IV
RZ767929-002



Washer-Spacer
Used in Liner Cylinder
and Hook Box
RD7190T06



Insulating Disc MKIII, IV
R0-3019004-0-01



Spacer (Combo Clamp)
MKIII, IV
R0-3019004-0-13



Retaining Ring MKIII, IV
RL424870



1.5" OD Steel Washer
RA6030Y05



Bias Pad
RJK-198275



Bias Pad Replacement Kit
RJK-301234



Bias Cylinder MKIII, IV (Combo Clamp)
RB5705XAB



Limit Switch Jupiter MKIV with M12 Connector
RH5963YAA



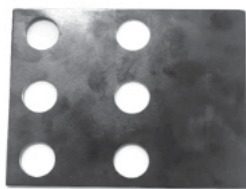
Limit Switch Bracket
RA6733Y02



Limit Switch Arm - Long
MKI, II, III, IV
RL422909



Reaction Pads MKIII & IV
RJK-193801



Shim for Reaction Pad MKIII, IV
RA2586Y01



Pivot Pin Combo Clamp Bias 1.5" OD
MKIII, IV
R0-2305775-0-01

Heavy-Duty Limit Switch without Arm MKIII, IV
RL422907



MKIV Guide Retainer (Combo Clamp)
RA6229X01



Wiper Seat - Large 4.5" MKIII, IV
R0-3393001-0-06



Wiper Seat - Small 3" MKIII, IV
R0-3393001-0-05



Bias Cylinder Pivot Pin
R0-1305774-0-01



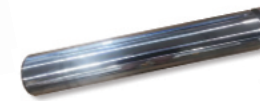
Bias Pin MKIII, IV
R0-3095002-0-9



2" Flat Washer
R0-3019004-0-08



Slew Cylinder Pin 1" Outside Diameter MKIII, IV Hook Cylinder Pin
R0-3095002-0-11



Guide Rod 4 1/2" (Combo Clamp)
RA6233X01



Guide Rod 3" (Combo Clamp)
R02203041-0-01



Spacer
RL424936



Insulating Washer MKIII, IV 3/4" Inside Diameter
RZ683490



Insulating Bushing Main Beam MKIII, IV
RA1856T05



Insulating Plate
RA-1203075-0-01



Tapped Plate
RA2634Y01



MKIV Slew Cylinder RB7036WAC
MKIII Slew Cylinder RA9337WAA / RB7036WAA



MKIV Slew Cylinder End Cap with Springs Assembly Kit
R0-2202634-0-011



Rod Weldment - Slew Cylinder Combo Clamp with Bearing
R0-2202634-0-01



MKIV Slew Cylinder End Cap with Springs
R0-2202634-0-11

RCR Part #	Part Description	Qty
R0-1304838-0-01	End Caps	1
RZ763793B	Rod Weldment	1
R0-3641000-0-19	Slew Cylinder Spring	2
R0-1304837-0-02	Bushing Retainer Plate	1



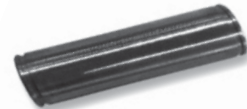
Slew Cylinder Spring
R0-3641000-0-19



Guide Rod Bushing (Combo 3) MKIII, IV
R0-1305728-0-01



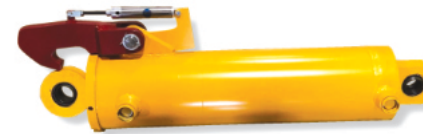
Clevis Pin - Combo Clamp (Liner Cylinder) MKIII, IV
R0-3015002-0-26



Pin - Combo Clamp 1" OD MKIII, IV, Hook Extend Pin
RA4823Y01



Roller Mount for Combo Clamp - Small
RA5553W01



6" Jack Cylinder with Lock and Air Cylinder, Round Eye
RB5715XAE



6" Jack Cylinder without Hook
RB5715XAD



6" Jack Cylinder with Lock and Hook
RB5715XAB



6" Jack Cylinder with Hook MKIV
RB5715XAA



Liner Cylinder MKIII, MKIV
RB5705XAF



Jack Clamp Frame Air Release Cylinder for MKIV Air Lock Cylinder Pin for MKIII & MKIV
RA4771Y04 - Air Cylinder only
R0-3014001-0-12 - Clevis only



Hook Weldment Lock for Jack Cylinder
RD5869YAA



Hook Extend Cylinder MKIII, IV
RB5708XAA



Plastic Washer (Combo Clamp 1" ID) MKIII, IV
RA1072Y01

Snap Ring for Hook Extend Cylinder Pin
R0-3013001-0-05



Insulating Washer (Combo Clamp 1" ID) MKIII, IV
RZ765375-001



Washer-Spacer Used in Liner Cylinder and Hook Box
RD7190T06



1" Flat Washer
RA0060021 /
R0-3019004-0-12



1 1/2" Flat Washer
RA0059012



Need help finding something?

Just because you don't see what you need in this catalog doesn't mean we can't help you get it. We are constantly adding parts and assemblies to our stocked inventory, and we pride ourselves in helping you find just what you need. Give us a call!



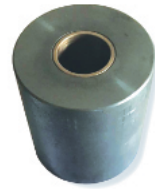
**Pin Roller
(Combo Frame
Small) MKIII, IV**
RD6987X01



**Roller Assembly
(Combo Frame
Small) MKIII, IV**
RA1681YAA



**Pin Roller
(Combo Frame
Large) MKIII, IV**
RD6987X02 /
R0-1305757-0-01



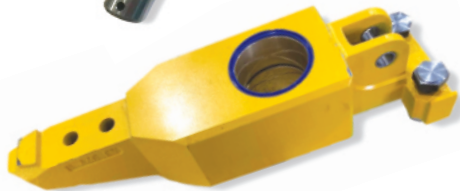
**Roller Assembly
(Combo Frame
Large) MKIII, IV**
R0-2305761-0-01



**Jack Cylinder Pin -
Upper 1.5\"/>**



**Jack Cylinder Pin -
Lower 1.5\"/>**



**Combo Clamp Hook Complete
with Bushing & Seals**
RA3031V02C



**Hook Bushing / Guide Rod Brass
(Large 4.5\"/>**



**Stop Bolt (Combo)
MKIII, IV**
RA0036341 / RG6961Y01



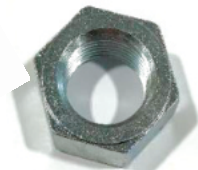
**Insulating Bushing
(Combo Clamp - Hook)
MKIII, IV**
RA1856T03 / RZ65379-001



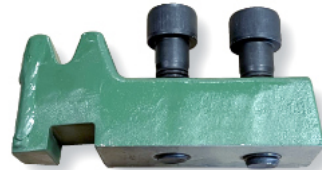
**Bushing Steel
(Combo Clamp - Hook)
MKIII, IV**
RA6030Y04



**Socket Head Bolts
for Combo Clamp**
RA0041199



Jam Nuts
RA0056019 / RF01796



MKIV Rail Clamp
RJK-197940

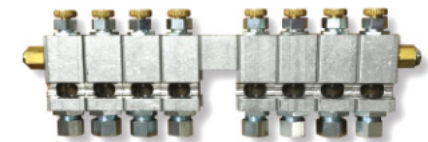


Hook Extend Cylinder Pin Kit
R2685110-KIT

RCR Part #	Part Description	Qty
R0-3095002-0-11	Pin - Slew Cylinder 1" Outside Diameter MKIII, IV	2
RA4823Y01	Hook Extend Pin	2
RA1856T03	Bushing - Insulating (Combo Clamp - Hook) MKIII, IV	2
RA6030Y04	Bushing Steel (Combo Clamp - Hook) MKIII, IV	2
RA1072Y01	Plastic Washer (Combo Clamp 1" ID) MKIII, IV	2
RZ765375-001	Insulating Washer (Combo Clamp 1" ID) MKIII, IV	2
R0-3013001-0-05	Snap Ring for Hook Extend Cylinder Pin	4
RA0060021	1" Flat Washer	16
RA006830	1/4 x 1 1/2 Cotter Pin	4

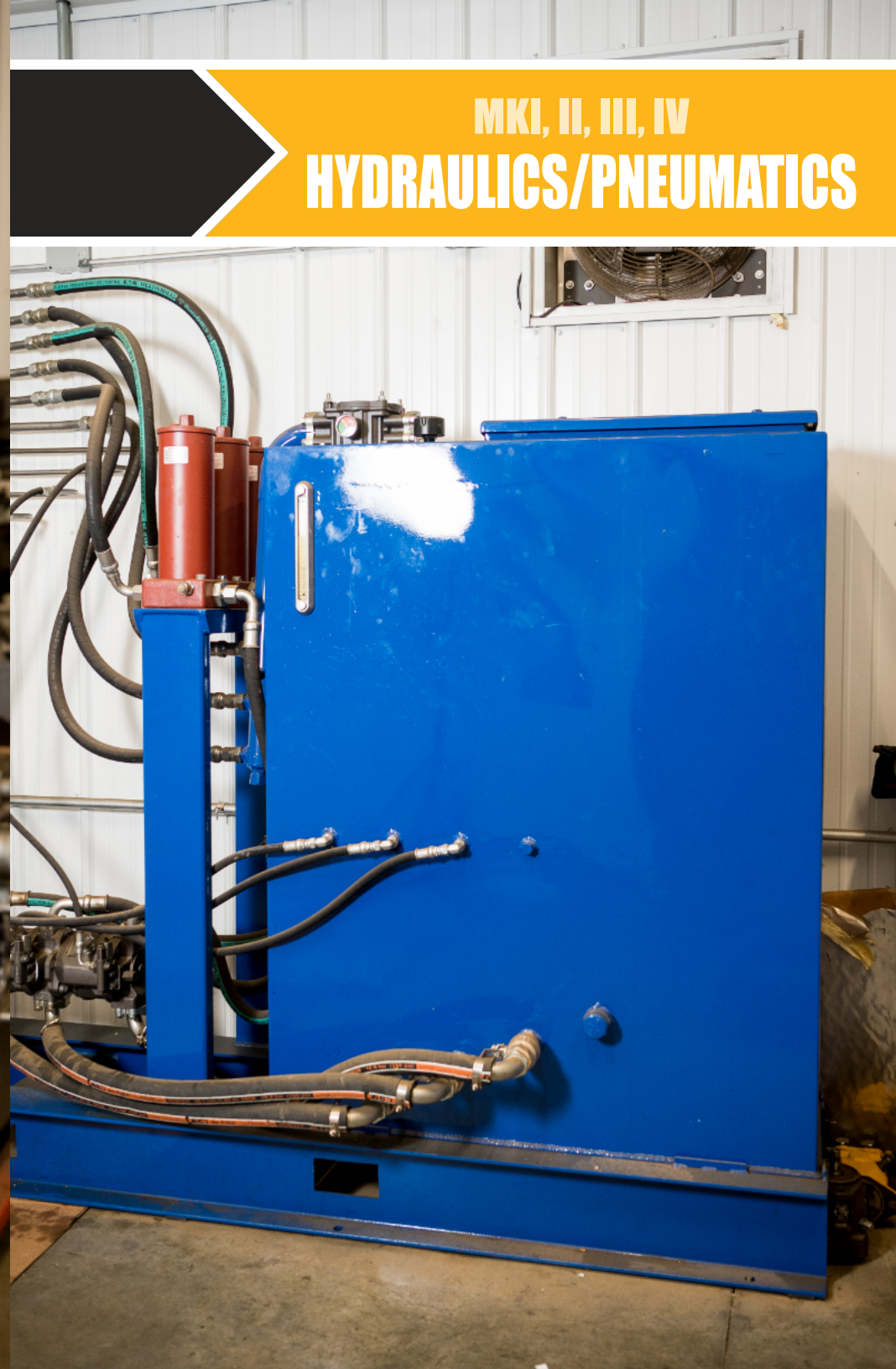


Clamp Pressure Switch - SD
RL41380 / R17983



Automatic Oiler
RB1657Y08

MKI, II, III, IV
HYDRAULICS/PNEUMATICS





**New Heavy-Duty Squeeze Cylinder
MKI, II, III, IV
RX68297U**

1-piece forged rod, both ends
machined to retain bearings with
1 snap ring retainer end and clevis end



**Lift Cylinder MKIV
RB5761XAA**



**Concrete Steel
Tie Squeeze Cylinders
RX7683628**



**MKIV Slew Cylinder
RB7036WAC**

**MKIII Slew Cylinder
RA9337WAA/
RB7036WAA**



**6" Jack Cylinder without Hook
RB5715XAD**



**6" Jack Cylinder with Lock
and Air Cylinder, Round Eye
RB5715XAE**



**6" Jack Cylinder with Lock and Hook
RB5715XAB**



**6" Jack Cylinder with Hook MKIV
RB5715XAA**



**Hook Extend Cylinder
MKIII, IV
RB5708XAA**



**Liner Cylinder
MKIII, IV
RB5705XAF**



**Bias Cylinder MKIII, IV
(Combo Clamp)**
RB5705XAB



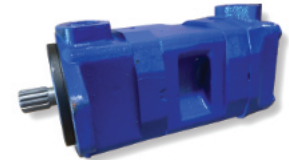
**Bearing COM16
Squeeze Cylinder**
MKI, II, III, IV
RL420159



**Unitized Piston
with Seal**
RD4676X02



Hydraulic Double Gear Pump
MKIV P3/P4
RA0713Y11 / 4029715



Vickers Vibrator Pump
R620-081465



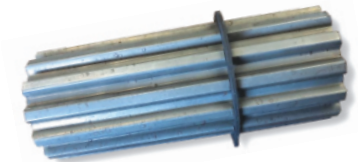
Rail Clamp Cylinder
RX683361



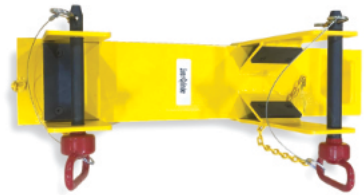
Traverse Lock Hydraulic Cylinder
MKI, II, III, IV
R0-3372001-0-01



**P1/P2 Piggy Back
Spline Coupling**
R902436104



**Durst Gear Box
Spline Adapter**
RC5696P61



**Liner Cylinder Bracket
for MKIV Tamper**
R2460860-LINER



6" Jack Cylinder Bracket
R2460860-JACK



**Rex Roth P1/P2
Pump for HST**
RD4346Y01-HST



**Rex Roth Pump
Compensator MKIV**
RC8058Y14



**Hook Extend Cylinder
Bracket for MKIV Tamper**
R2460860-HOOK



**Lift Cylinder
Bracket Holder for MKIV**
R2460860-LIFT



**P1/P2 Casappa
Pump MKIV**
R5038083



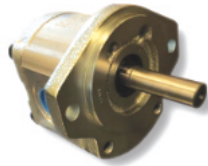
**Rex Roth P1/P2
Pump MKIV**
RD4346Y01 / R4016317



**Slew Cylinder
Bracket for MKIV Tamper**
R2460860-SLEW



MKIV Hydraulic Vibrator Motor Rex Roth
R4012702



Oil Cooler Fan Motor
RC7376Y04

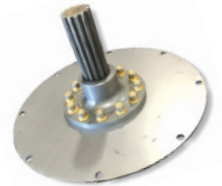


Coupler for Oil Fan Cooler Motor
R5025804

Durst Flex Plate for Funk Gearbox
R5074799



MKIV Flex Drive Plate Assembly (also fits STM and Terrel Gearbox)
RC5696P18



Projector Rear Variable Displacement Drive Motor MKIV (Exchange Only)
RC5881Y02



Front Fixed Displacement Drive Motor MKIV (Rebuilt) Exchange
RC8649Y01



Variable Displacement Motor for HD and Drone
R4029264



In Tank Return Filter Assembly for MKIV and HST
RC9249Y05



Hydraulic High-Pressure Filter
RB5548Y08



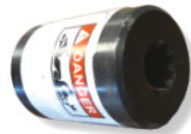
Hydraulic High-Pressure Filter
RB5548Y09



Dennison Rear Travel Motor MKIII
RA4124Y01D



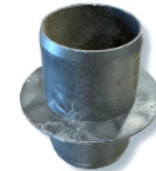
Clark Transmission Charge Motor MKIV
RD6020Y01 / R4024664



Charge Pump & Motor Coupler
RA0728Y18



KZ 10 Filter
R0-3354005-0-09



Coupler for KZ Filter
R0-3354005-0-04



MKIV Charge Pump for a Clark Transmission
RA3448Y09



MKIII Traction Motor
R0-3317006-0-08



Gear Motor Pump, 9 Spline
R350204-1-09



Liner Float Valve MKIII
R0-3333037-0-08



D05 Valve Assembly Squeeze Cylinder for MKIV / Direction Hook Valve for MKIV, Clamp Valve
R0-3333037-0-09



Gear Pump Kit
R4024650



MKI, II Vickers Hydraulic Vibrator Motor
R0-3321014-0-02



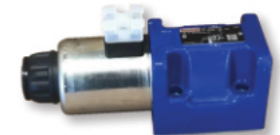
MKIV P7 Pump, Clockwise Rotation, 11 Spline Double or 9 Spline
RD4313Y02
RD4313Y02-11



Rear Traction Valve Assembly Complete
RC9095WAH



Flow Control Valve, Sandwich, D05
R0-3335018-0-02



Workhead Relief Valve for MKIV, MKVI, HD, Drone
R4029520



**Right/Left Hand Slew Valve
Right/Left Hand Squeeze Valve
Workhead Traverse Assembly
RC0993Y03**



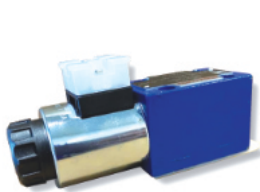
**Bias Valve MKIV
R0-3333037-0-10**



**Pivot Lockout Valve Assembly
RC9088XAA**



**MKIV P7 Relief Valve
R0-3334011-0-06**



**(D03) HYD Valve
3 POS 4-Way
RC0993Y14**

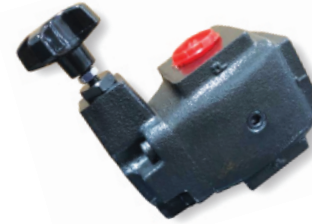


**Auto Jack Regen Valve -
Whole Valve
RA4490Y07**



**MKIV Vibrator Vent Valve
RC1140Y04**

Please note: This does not come assembled for easy installation.



**Relief Valve
R0-3334011-0-03**



**Oil Cooler Fan Motor Valve Assembly
RG0686XAD**



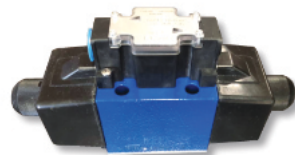
**Right/Left Hand Hook
Regen Valve MKIV
R0-3333037-0-18**



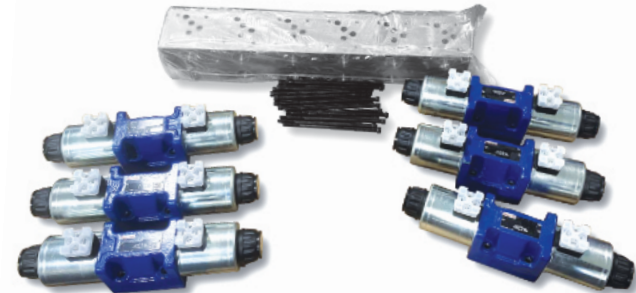
**Right/Left Hand Hook
Workhead Lift Valve MKIV
R0-3333037-0-19**



**Right/Left Hand
Slew Valve MKIII
R0-3333010-0-08**



**Right/Left Hand
Standard Squeeze Valve MKIII
RL425049**



**Workhead Lift Complete Assembly with Manifold
RC9101VAA**



**MKII Vent Valve /
MKII Pivot Front Lockout
RA1215Y07**



**Bias Valve
Right/Left Hand Workhead MKIII,
Right/Left Hand Hook Extended,
Right/Left Hand Jack
R0-3333039-0-05**

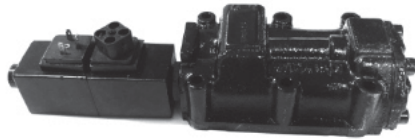


**PO Check D03
Sandwich Valve
R0-3336024-0-07**

Workhead Lift Complete Assembly with Manifold RC9101VAA		
RCR Part #	Part Description	Qty
R0-3333037-0-09	D05 Valve Assembly Squeeze Cylinder for MKIV / Direction Hook Valve for MKIV, Clamp Valve	2
R0-3333037-0-19	Right/Left Hand Hook Workhead Lift Valve MKIV	4
R21-0283	Manifold	1
	Long Bolts	20



**Traction Valve Manifold Assembly
(Front and Rear) Whole Valve
RA4490Y03**



**Electric Control Valve Assembly
for Clark Transmission Exchange Only
RD8489P64**



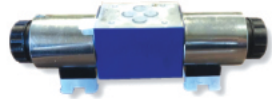
**Rex Roth Hydraulic
Viton Seal for D03
R900017610**



**Rex Roth Hydraulic
Viton Seal for D05
R900017615**



**Boss O-Ring Kit
for MKIV Tamper
RA4839Y01**



**Pump Control
Valve Assembly
RC0993Y01**



**D05 Valve Assembly Squeeze Cylinder
for MKIV / Direction Hook Valve for
MKIV, Clamp Valve
R0-3333037-0-09**



**Drone Travel
Coil D05
R5004639**



**24 Volt Coil
for Drone
R4020299**



**D05 Coils
24 Volt DC
RC3812Y03**



**D03 Coils
24 Volt DC
RB4068Y15**



**Front Wheel Drive
Motor Valve Assembly MKIII
R0-3333039-0-04**



**1/4 - 20 x 5 1/4" Long
Socket Head Bolt
RA0041217**



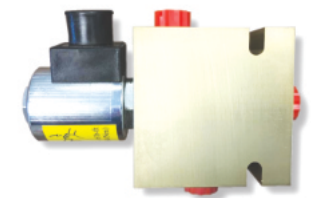
**O-Ring
RD8489P51**



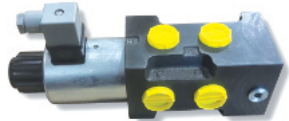
**Decel Valve Older MKIV
2 each Machine, On/Off
Switch for Air Conditioner
RA0729Y06**



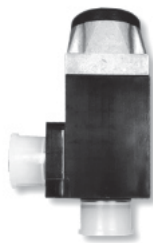
**Decel Valve
RD8305Y01**



**Warm-Up Valve MKIV
RA0730Y04**



**Warm-Up Valve
R5007825**



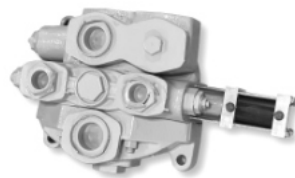
**D03 Solenoid 24 Volt
Coil Vickers
R0-3339041-0-13**



**Squeeze Pressure Switch
RL40624**



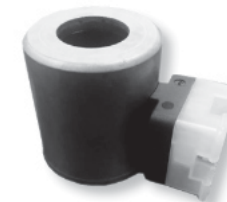
**Pressure Reducing for Pivot Axle Valve
R0-3334026-0-04**



**Travel Valve
R0-3333056-0-11**



**Clark Transmission Coil
RD8506Y01**



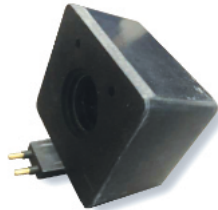
**Rex Roth
Replacement Coil
R5004649**



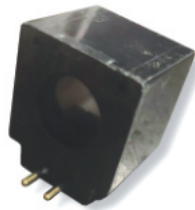
**TR10 Work Travel
Valve Coil
R02-304251**



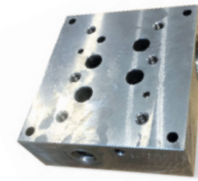
Coil for MKIII
R0-3339031-0-01



Rex Roth Coil
R900219602



Coil
R0-3339031-0-08RX



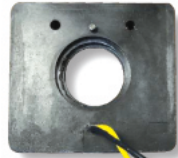
Rear Traction Subplate
RD6328X01



Front Subplate D08
R0-3361004-0-05



ESTR Vent Valve MKIII
R900020175



D05 Conduit 110 Volt for MKIII
R900019801



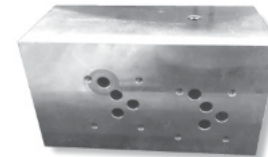
Coil for Travel for Variable Speed Motor
RC8058Y16 / R902602670



Auto Jack Manifold
R0-3366046-0-01



Vent Manifold
RA5354V01



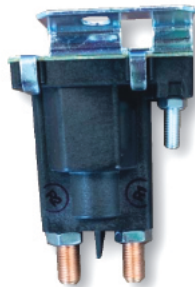
Liner Cylinder Manifold
RA1458V01



Workhead Traverse Manifold
R0-3364012-0-02



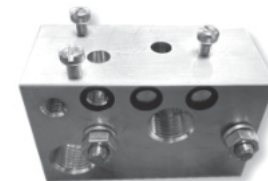
MKIV Suction Strainer with Magnets and Quick Shut Off
RD4176Y01



Power Relay 24V DC
R172164 / CR1330



Coil
RF026061



Regulator Manifold
R0-3401000-0-09



D05 Sandwich Manifold for Liner & Clamp Cylinder Valve Assembly
RC3759W02

We will get you what you need.

We pride ourselves in doing our very best to find what you need. So just let us know, even if you don't see it in this catalog!



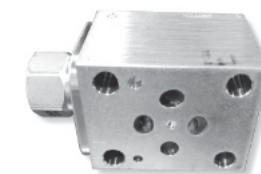
Exhaust Vent
R0-3350004-0-06



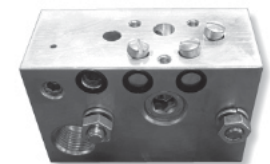
MKIV Emergency Pump 24 Volt HST and MKIV Tamper
R0-3316003-0-04



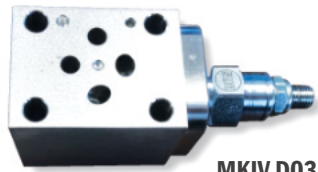
Hydraulic Valve Assembly
R0-3336024-0-06



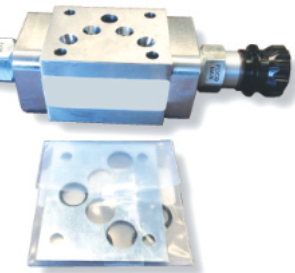
Pivot Lockout Sandwich Valve
R0-33336024-0-06



Manifold Regulator MKIV, STM
R0-3401000-0-13



MKIV D03 Work Relief Sandwich Valve
RA1070Y29



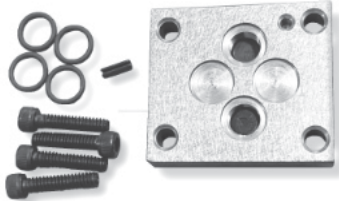
Workhead Dual Flow Control Sandwich
R0-3335024-0-12



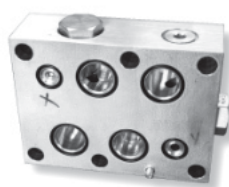
MKIV D05 Single Flow Control Sandwich Valve
R0-3335024-0-11



MKIV Traverse Shuttle Sandwich Valve
RC0674Y01



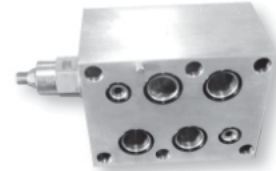
Manifold Accessories (Block with Hardware and O-Rings)
R0-3360011-0-06



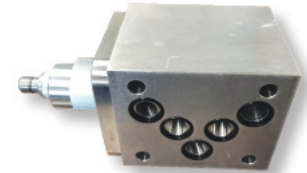
MKIV Traction Check Sandwich Valve
RA2803Y04 / RC8214YAA



Custom Manifold Assembly
R0-3334057-0-07



MKIV Auto Jack Regen Flow Control Sandwich
RB9529Y01



MKIV D05 Bias Pressure-Reducing Sandwich Valve, Pivot Frame Lockout Pressure-Reducing Sandwich
R0-3334013-0-05



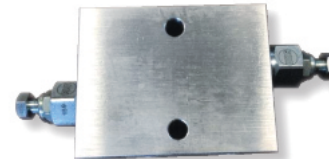
MKIV Workhead Dual Check-Valve Sandwich
R0-3336002-0-01



Manifold Exipilot
R0-3401000-0-06



MKIV D05 Dual Relief Sandwich
RA1070Y19



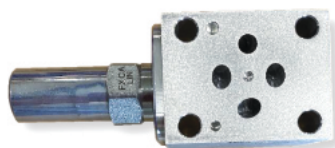
Lockout Float Cross Port Relief Valve
RA4057Y01



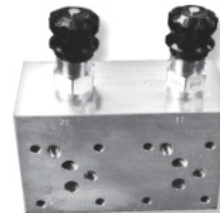
Workhead Check-Valve Sandwich - D08 (2 Assemblies on MKIII)
RA2803Y01



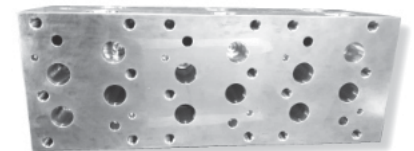
Selector Valve MKI, II, III
RL421386



Flow Control Sandwich D03
R0-3335031-0-15



Dual Flow Reg Assembly (D05) for Bias and Clamp Valve & Liner Clamp
RH2247Y01



3-Valve Manifold, ECTR Hook Manifold Steel
R0-3364040-0-01



MKIII Left or Right Hand Workhead Manifold
R0-3364033-1-01



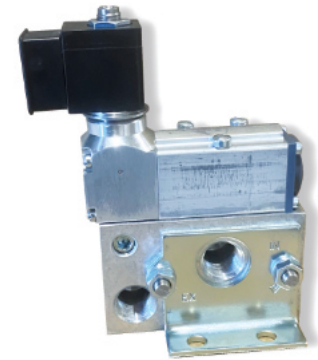
Clamp Pressure Switch - SD
RL41380 / R17983



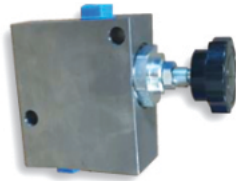
Decel Filter with Housing
RA5748Y01



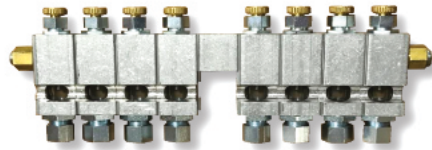
MKIV Single Coil Air Valve
RD0393Y02



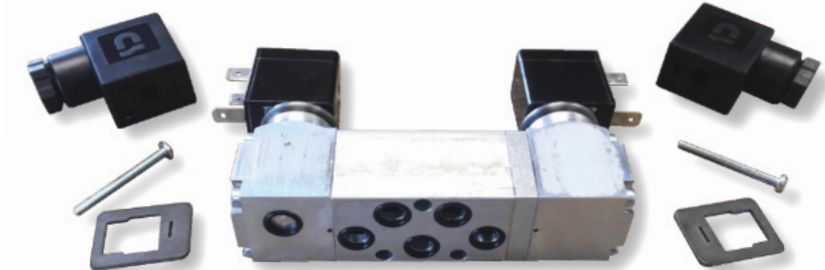
Air Valve Assembly
RC7781XAB



Flow Regulator Valve
R0-3335012-0-01



Automatic Oiler
RB1657Y08



Double Solenoid Air Valve MKIV for Bias Valve
RD0393Y01



Oilers
RL40603



MKIV Hose Bracket 1 x 2 x 10 AL HS
R0-1101329-0-01S



MKIV Hose Bracket 1 x 2 x 4 1/2 AL HS
R0-1101325-0-09



Clamp Assembly
R5013800



Transfer Pump 12 Volt
R41053893-12V



Booster Pump for MKIV
RB9432Y01



Air Pressure Sender
RA0151Y28



Single Solenoid Air Valve (Piloted) MKIV for Workhead Release Valve and Index Brake Valve
RD0393Y03

We can customize a kit for you

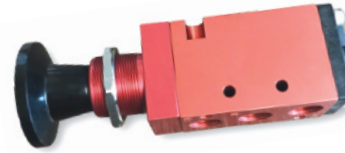
If your team needs a tailored maintenance kit, just let us know. We will work with you to put together the best kit to suit your needs!



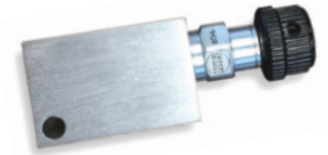
Miniature Pressure with Gauge
RL422845



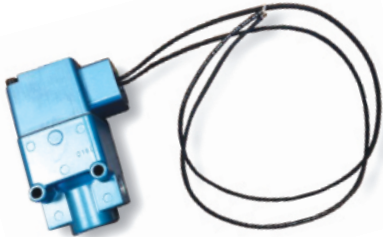
MKIV Jupiter Horn
RD4121Y02



**MKIV Shadow Board
Air Lift Valve**
RD4741X01



**Traverse Lock Cylinder
Relief Valve**
R0-3334049-0-01

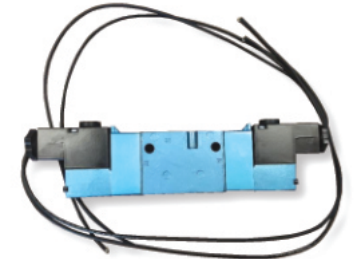


**Emergency Brake Valve MKIV
Hard Wired**
R0-3413003-0-15

**Emergency Brake Valve
MKIV DIN Connect**
R5006344



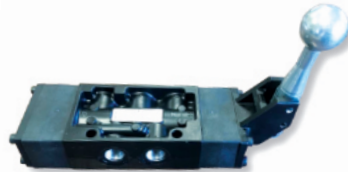
Airline Filter
R0-3432000-0-02



MKII Air Travel Valve
RL424440



Air Switch Valve
RL425341



MKI Air Control Handle Valve
RL424385



Handle (Valve Bank) MKI
RY710945



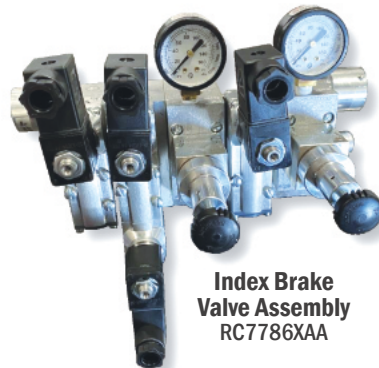
Stacking Regulator
R0-3413005-0-18



Air Tank Drain Valve
RA3280Y01



**Shadow Board
Valve Assembly**
RC7788XAA



**Index Brake
Valve Assembly**
RC7786XAA



Chain Link MKI Valve Bank
RL423012



Pressure Protection Valve
RA6519Y01



**Safety Relay Valve / Quick
Release Holding Valve**
RL424334



MKIV Throttle Control Valve
RD2882Y01



MKIII, IV Throttle Control
R0-3470022-0-02

Valve, Brake, Spring Return - Goes to Armrest
R4008071



Hand Brake Valve MKIII 1/2
RL423629



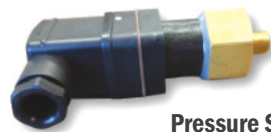
Spring Return Brake Valve
R4008253



Spring Brake Relay
RA5045Y02



MKIV Shadow Board Lift Cylinders
RC0839Y01



Pressure Switch MKIV Clark Transmission
RA7081Y13

Air Relay Valve
RA5045Y01



MKIV Air Horn Older Style
RZ780309Z



Socket Head DIN Connect Adapters
R100570



Air Switch MKI, 3-Position Toggle MKI
RZ6206

Pilot Operated Air Valve
R0-3413001-0-04



Air Valve (Push Button)
RL424113

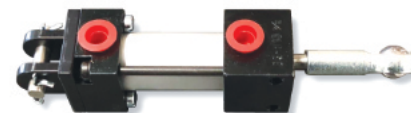


Pilot Valve MKI, II, III, IV
RL425340



Valve Air Toggle Switch (MKI, II, III)
RL424114

Air Shift Kit MKIII
R0-3470025-0-01



Kershaw Plow Lock Cylinder
R191243



MKIV Air Bias Cylinder for Receiver and Shadow Board
RG5869Y01

Complete with Air Fitting and Rod Ends
Part # R0-2303635-0-06

Needing a cylinder or valve you don't see?

Just give us a call at
(217) 268-5110 and we'll help
you find what you need!



MKIII Combo Lock Air Cylinder
RL424468



Projector Buggy Bias Air Cylinder
R0-3470019-0-06



**Jack Clamp Frame
Air Release Cylinder for MKIV
Air Lock Cylinder Pin for MKIII & MKIV**
Without Clevis - RA4771Y04
Clevis - R0-3014001-0-12



**Workhead Air Cylinder
Lock Harsco Stabilizer**
R5045881



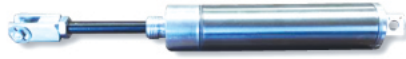
Double Action Air Cylinder
R0-3470023-0-06



Air Cylinder Double
R5059188



**Air Cylinder Assembly
for the Receiver and Shadow Buggy**
R0-2303635-0-06



MKIII Combo Lock Air Cylinder Kit
RL424468-KIT



**MKI Air Cylinder Valve Bank or
MKIII Pin Cylinder for Shadow Board**
RY766898-001



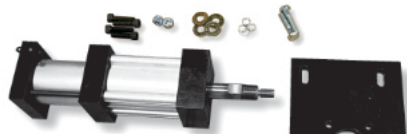
**Workhead Air Lock Cylinder
MKIII, IV**
RY767203-001



**Drone Workhead Lock Air Cylinder
Rear Transmission Air Cylinder**
R0-3470014-0-01



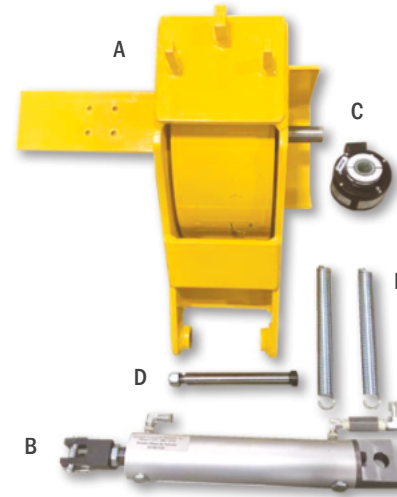
Double Action Air Cylinder MKIV
R0-3470019-0-14



**Double Air Cylinder Kit
Replaces the R2013625**
R5060044



**MKIV Funk Transmission /
Rear Transmission Shift Air
Cylinder Kit with Rod Ends**
R0-3470014-0-01-KIT



(A) Encoder Wheel Assembly - Complete
R69427WA6

(B) Encoder Wheel Air Cylinder
RA1901YAA

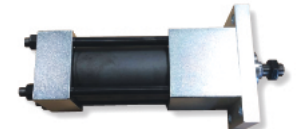
(C) Encoder
R5004402

(D) Shoulder Bolt for Encoder
RZ752500-041

(E) Spring for Bias Buggy on Projector Buggy
RL4103356



MKIV Encoder Air Cylinder
R0-34710007-0-01



MKIV Sliding Axle Lock Cylinder
R0-3371069-0-01



Spring Extension Air Cylinder
R0-3470019-0-18



Air Cylinder for Shadow Board Assembly MKIII
R0-2303635-0-02



TR10 Brake Index Valve
R0-3412004-0-02



Pressure Transducer MKIV
0 to 10,000 PSI
R4008374



**Two-Speed
Air Shift Cylinders**
RA3651Y07



**Two-Speed Air Shift
Cylinder Kit - Two-Speed Funk**
RA3651Y07-KIT

MKI, II, III, IV ELECTRICAL



**Standard Subplate
for D08 Valves**
R0-3361004-0-01



Pin for Shadow Board Air Cylinder
R0-1406298-0-01



**Master Switch
for Battery on MKIV**
R0-3180004-0-04



Barksdale Pressure Switch
R96201



Plug, Quick Coupling
RL41228



Filter Muffler
RL423741



**MKIV Slew Cylinder End Cap
with Springs Assembly Kit**
R0-2202634-0-011



**Traction Valve Handle
MKI, II**
RY711173-02A



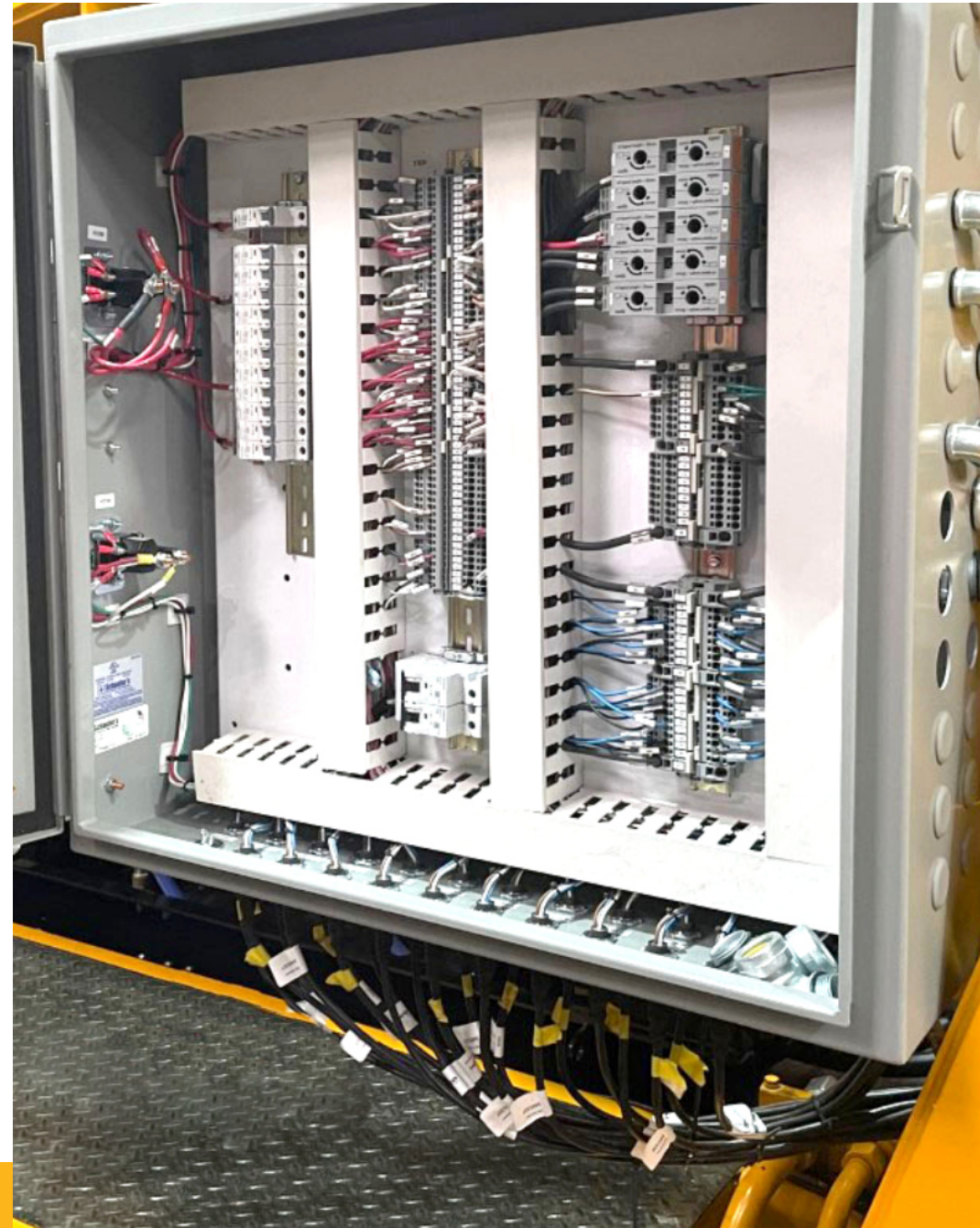
MKIII, IV Coupling for Air Shift
R0-1407202-0-01

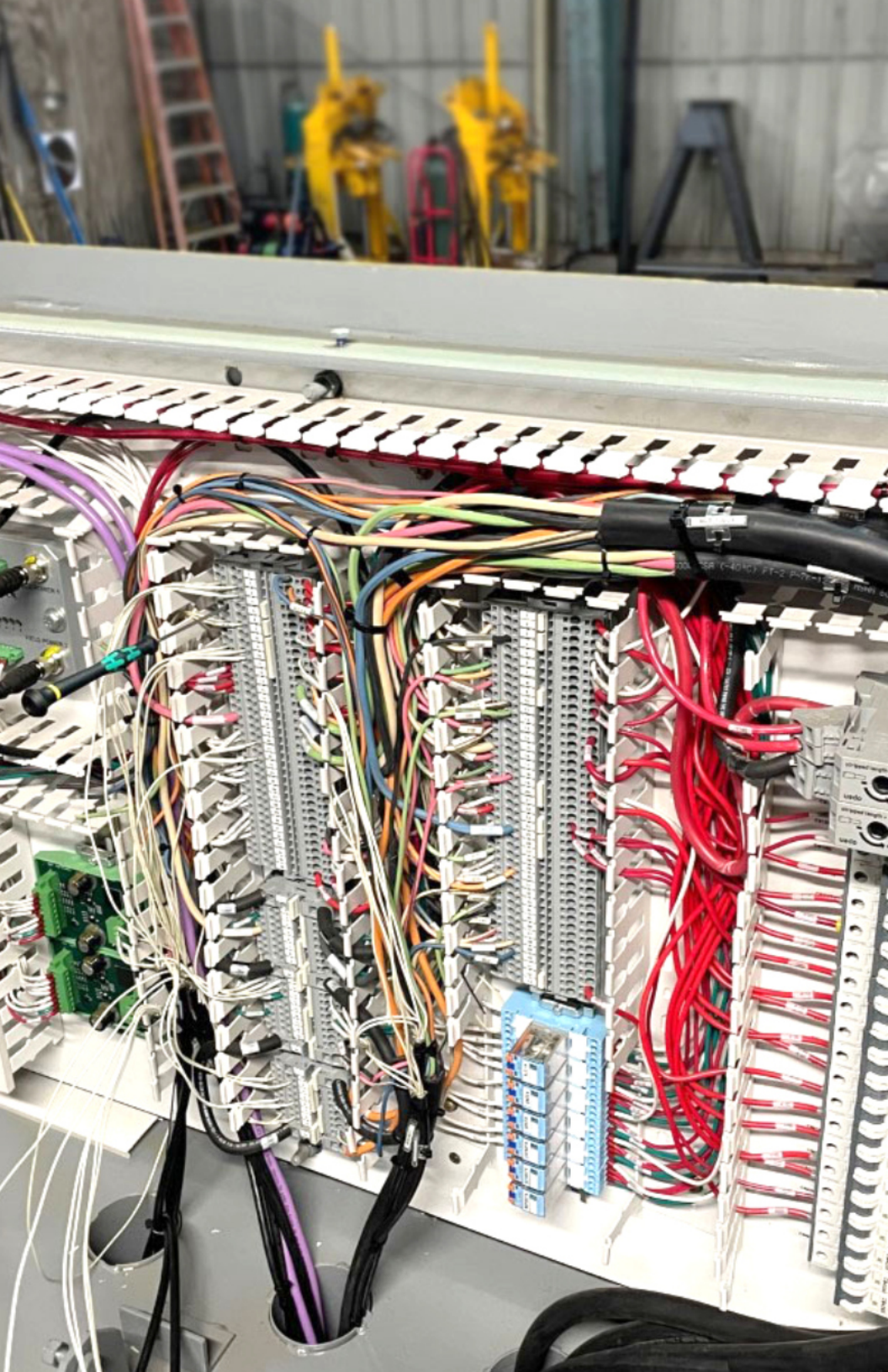


Hook Assembly for Turntable
MKI, II, III, IV
RY691404-01A



**MKIII MKIV
Front Buggy Lift Valve**
RL410606





Drone Travel Coil D05
R5004639



24 Volt Coil for Drone
R4020299



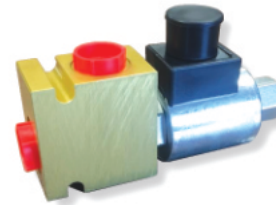
D05 Coils 24 Volt DC
RC3812Y03



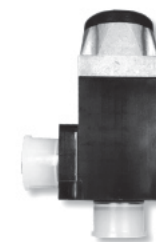
D03 Coils 24 Volt DC
RB4068Y15



Warm-Up Valve MKIV
RA0730Y04



Decel Valve Older MKIV
2 each Machine, On/Off
Switch for Air Conditioner
RA0729Y06



**D03 Solenoid 24 Volt
Coil Vickers**
R0-3339041-0-13



Decel Valve
RD8305Y01



Clark Transmission Coil
RD8506Y01



**Rex Roth
Replacement Coil**
R5004649



**TR10 Work Travel
Valve Coil**
R02-304251



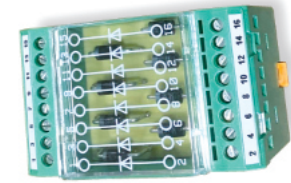
New Digital CANS for Jupiter System
R4019452



Analog CAN for Jupiter System
R4019453



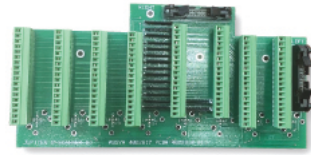
DC / DC Converter
+/- 12 Dual Output
R2005990



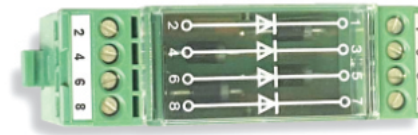
Diode Block
RB0970Y20 / R2949389



Jupiter 2 HD 32 Module CAN 6
R4028741



Jupiter II Scanner Board Assembly
R4022817



Diode
RB0970Y18



Left Hand Switch Pad Assembly
RB0941WAB



Jupiter Analog Input CAN
RH2967Y02 / R5090720



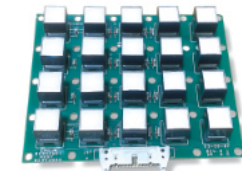
Jupiter 1 Digital Input CAN
RH2967Y01 / R5090719



New Style Analog Input Module
RH2967Y03 / R5090721



Right Hand Keypad VME
(Exchange Only)
RC6341WAC



Control Keyboard
(Exchange Only)
RB0943WAA



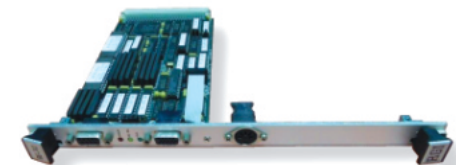
MKIII 1/2 Jam Box
RH5991Y01



Safety Interrupt Module
RH5568XAA



Left Hand Keypad VME
RC6367WAB



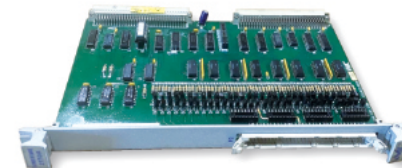
RG 741 VME Graphic Board
(Exchange Only)
RG741Y03



Jam Box for MKIV, Drone, 6700, and MKVI G6
(need customer's machine number)
R5095084 / R5015210



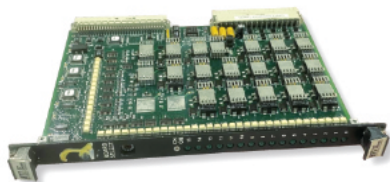
DC 2 AC 24 Volt Power Converter
RA1787Y24 / RH7272WAA



VME 2170 Card
(Exchange Only)
RB0841XAA



CPU Card for VME MKIV
(Exchange Only)
RC0979WAF



Fairmont Tamper 16-Channel Output Card (Exchange Only)
RG1622YAA



MKIV VME 311A Card (Exchange Only)
RG8093YAA

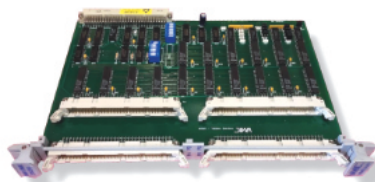


J42 Card for Jupiter 2
R4022695

Workhead Proximity Switch MKIV
RH5463XAA



VME REL Output Card Assembly (Exchange Only)
RG1622YAB



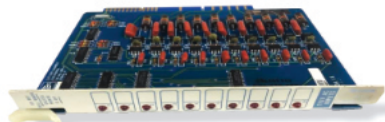
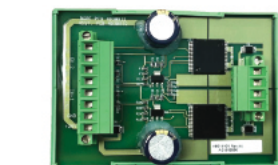
MKIV Output Card VMIVME-2528 (Exchange Only)
RB0839XAAEX

Linear Transducer for MKIV HD and Drones
R2006042



Magnet and Bracket sold separately.

MKIII VME Power Supply (115 VAC) Exchange
R0-2305351-0-01EX



Input Board Exchange MKIII
R0-2305347-0-01



Limit Switch Arm - Long
MKI, II, III, IV
RL422909



Limit Switch Arm - Short
MKI, II, III, IV
RL422908



Limit Switch Jupiter MKIV with M12 Connector
RH5963YAA

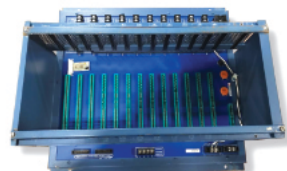


Heavy-Duty Limit Switch without Arm
MKIII, IV
RL422907

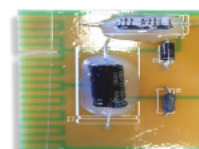


Limit Switch
R0-3119003-0-02

H-Bridge Driver
RH5614Y01



MKIII Chassis Rebuilt/Exchange
R0-3150017-0-01



Projector Lamp Volt Control Board MKIV
R0-2306408-0-01

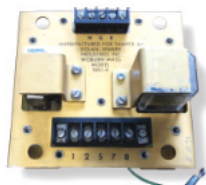


Continuous Speed Projector Motor MKIV
R0-2302202-0-01

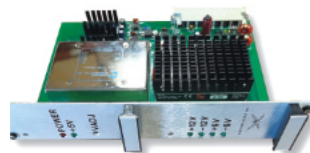


Double Barrel Adapter Assembly (Exchange)
RH6752XAB

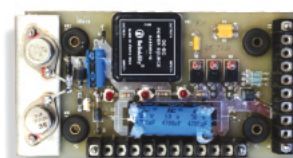
Output Board Exchange MKIII
R0-2305350-0-01



Receiver Amplifier for MKI, II, III
RL410287



MKIV Power Supply 24 Volt (Exchange Only)
RC9286Y01



A2 Board (Exchange Only)
R171463-1



Projector Lamp Volt Control Board Holder
R0-3237004-0-01



Continuous Speed Projector Motor Holder
R0-3237004-0-02



New Double Barrel Receiver
R4007012

Double Barrel Exchange Only
(Must have Rebuildable Core)
R4007012EX



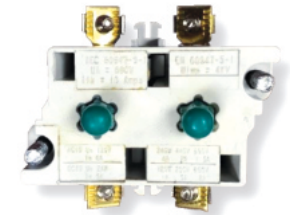
Bullet Projector Assembly MKIV
R5033556



Contact Block NC for MKIV Joystick
RB1348Y03



Contact Block NC
RL410954



Contact Block NO-NO
RL40805

Windshield Wiper Blade MKIV
R0-3502003-0-08



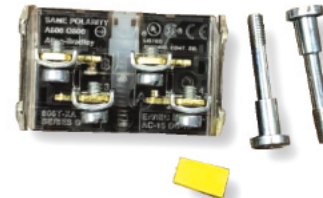
Windshield Wiper Arm MKIV
R0-3502050-0-01



Projector Bulb
MKI, II, III, IV
RB9263Y01



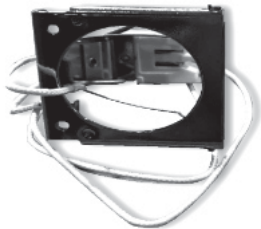
LED Cab Light
for MKIV Tamper
R5008006



Contact Block NO-NC for MKIV Joystick
RB1348Y02



MKIV Master Switch On/Off (Push/Pull)
RF040119



Bulb Holder
MKI, II, III, IV
RC8106Y01



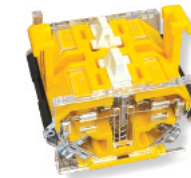
Photocell Reflector Assembly for Surface
MKI, II, III, IV Lead Sulfide
RL410284



Power Cable
for Front Buggy
R5036079



Contact Block NC
RF040116



Contact Block NO/NO
RA0653Y01



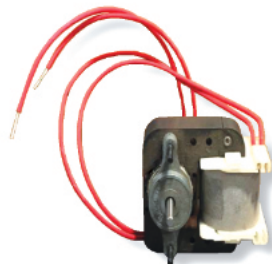
On/Off Toggle Switch
R33407-01



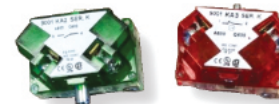
Projector Chopper Motor Blade
RY684121B



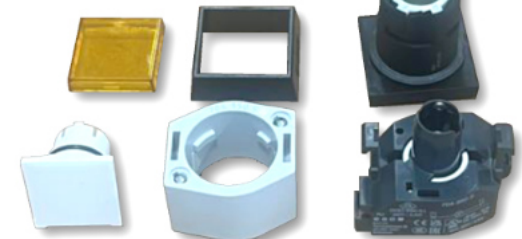
Chopper Disc Assembly for Double Barrels
RZ754020A



Projector Chopper Motor
MKI, II, III, IV
RL41617



Push/Pull On/Off Switch for MKI, II & II
RL422428



PB Maintain SW
RA0655Y07



**Joystick Assembly Kit
with Contact Blocks MKIV**
R4015376



**New Style 24 VDC
Plug-In Relay MKIV**
RD0650Y07



**Jupiter Clark
Transmission
Speed Sensor**
RH5133WAS



**Funk Speed Sensor
MKIV**
RB8668P31



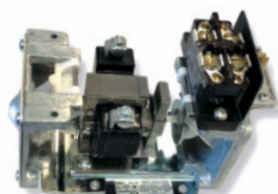
**Cable Assembly
M12, M/PT06, 1
(Goes to Inclinometer)**
R5048566



Breaker 30 AMP
RC9678Y12



120 Volt AC SSR Relay MKIV
R0-3150021-0-03



**Traction Delay for MKII
Harsco Backup Tamper**
R04082019



Cable Assembly
R414277



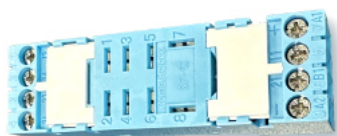
Sync Cable
R4018523



**MKIV Jupiter M23-M Pig 10,
Cable Assembly**
R414273



MKIV Power Relay
R172164 / CR1330



Relay Socket
RD650Y04



**Floor Cycle Cable M12-90
F/PIG 4M SH 5-CON**
R4016221



Cable for CAN
R414278



**Cable for CAN
6 M23M Pig 5M**
R414272



**MKIII Mode Switch
Actuator KN**
R0-3112001-0-02



Two-Way Switch
RL410952



M12 Splitter
R414260



Cable J1939 with Resistor
R4031474



Cable J1939 No Resistor
R5000347



**MKIV System 5 L/H
Keypad Cable**
RB1813XAB / RCL2015



**Cable M12-M-F
0.5M SH 5-COND**
R2013714



**String Pot Adapter Cable
from String Pot to String Pot Cable**
(Keeps from replacing whole cable due to wear)
R510259



Pigtail for Drone
R5054730



Bias Cable for Receiver Buggy
R4022370

Also works for R4022368



M12-M/PIG 4M 4-COND HF Cable
R3401339



String Pot Cable, 15 M, M12 Female/Bare End
R0-3137013-0-16



Jupiter M12 Cable Torque Tool
R3427735



Jupiter Cable Wrench
RH6285X01



M12 Male Connector
R0-3231007-0-53



Jupiter 1 Pressure Sensor
RH5133WAE



MKIV Jupiter Engine Temp Sender
RH5133WAT



MKIV Temp Sender 100-300F
RH5133WAC



Network Cable M/F
RH6339YAB



Pigtail for Drone
R5054730

Jupiter 1 Emergency Cable Kit MKIV Tamper R2018

RCR Part #	Part Description	Qty
R3401329	Long Cable for MKIV String Pot, M12 Male / Female Cable / Pressure Transducer Converter Cable 32.81 ft	1
R4022375	M12 Female / DIN Connectors for Air Valves 32.81 ft	1
R4022342	M12 Female / DIN Connectors for Hydraulic Valves 32.81 ft	1
R3401346	M12 Male / DIN Connectors & Tranzorb for Hydraulic Valves 32.81 ft	1
R4015775	M12 Female / Bare for Switch Inputs 32.81 ft	1
R3401332	M12 Male / Bare for Field Power 32.81 ft	1

Additional Cables We Offer

- R3401324- 1 Meter
- R3401325- 2 Meter
- R3401326- 3 Meter
- R3401327- 5 Meter
- R3401328- 5 Meter
- R3401329- 10 Meter
- R3401332- 10 Meter
- R3401336- 4 Meter
- R3401337- 6 Meter
- R3401339- M12 Male/Pigtail
- R3401341- 1 Meter
- R3401342- 2 Meter
- R3401343- 3 Meter
- R3401344- 5 Meter
- R3401346- 7 Meter
- R4015775- 10 Meter
- R4016221- 4 Meter
- R4022325- 1 Meter
- R4022326- 2 Meter
- R4022327- 3 Meter
- R4022329- 5 Meter
- R4022330- 7 Meter
- R4022331- 10 Meter
- R4022333- 3 Meter
- R4022334- 5 Meter
- R4022336- 1 Meter
- R4022338- 3 Meter
- R4022341- 7 Meter
- R4022342- 10 Meter
- R4022346- 2 Meter
- R4022353- 1 Meter
- R4022354- 2 Meter
- R4022356- 10 Meter
- R4022358- 5 Meter
- R4022369- 2 Meter
- R4022370- 3 Meter
- R4022371- 5 Meter
- R4022375- 10 Meter

Jupiter 2 Emergency Cable Kit MKIV Tamper R2019

RCR Part #	Part Description	Qty
R4022331	Network Cable 32.81 ft	1
R3401329	M12 Male / Female Cable 32.81 ft	1
R4022375	M12 Female / DIN Connectors for Air Valves 32.81 ft	1
R4022342	M12 Female / DIN Connectors for Hydraulic Valves 32.81 ft	1
R3401346	M12 Female / DIN Connectors & Tranzorb for Hydraulic Valves 32.81 ft	1
R4015775	M12 Female / Bare for Switch Inputs 32.81 ft	1
R3401332	M12 Male / Bare for Field Power 32.81	1



Encoder
R5004402



Encoder for Drone
R5001513

Please note that the Drone Encoder and the Encoder are not the same item. They are not interchangeable.



Pressure Transducer MKIV
0 to 10,000 PSI
R4008374



Gang Push Button Switch
RD8514Y01



MKIV LED, 6 Chip, 24V, Yellow
R0-3101019-0-33



MKIV LED, 6 Chip, 24V, Red
R0-3101019-0-36



Encoder Shaft Coupler
R0-3624024-0-04



Optical Encoder
R0-3160001-0-04



Encoder Shaft Adapter - Old Style
RA1917Y01



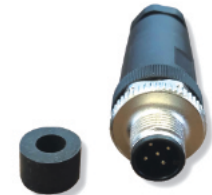
MKIV Lamp
RB0881Y03



MKIV #51 Switch
RA9264Y17



Push Button Switch
RA0655Y02



M12 Male Straight Field Wire Able Connector
R2020



Foot Switch M12 Connector
RC5363WAK



MKI, II, III Foot Pedal Index Cycle
R0-3115000-0-02



Kato Generator (Exchange) MKI, II, III
RZZ820EX



Wiper Motor MKIV Tamper
R0-3502007-0-02



M12 Female Straight Field Re-Wireable Connector
R2021



Manuel Pump Box Assembly
RH6204YAA



Squeeze Pressure Switch
RL40624



Fuel Gauge Sender Assembly
RH5133WAK



MKIV Temp Switch 180 Degree
RA1556Y09



Traverse Lock Hydraulic Cylinder
MKI, II, III, IV
R0-3372001-0-01



MKIV Temp Switch 70 Degree
RA1556Y08



Water Temp Sender
RA1556Y06



Temp Sender
RA1556Y21



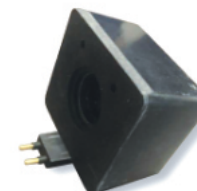
Male Rod End 1/2"
R0-3652053-0-02



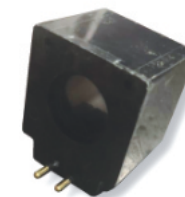
New MKIV VME Slow Speed Linear Actuator Connector MKIII, IV
RC0046XAA



Coil for MKIII
R0-3339031-0-01



Rex Roth Coil
R900219602



Coil
R0-3339031-0-08RX



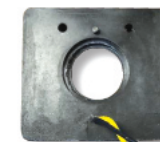
Pivot Pin
RA0926Y01



MKIII, IV Surfacing Actuator for Jupiter
RC0046XAC-N



ESTR Vent Valve MKIII
R900020175



D05 Conduit 110 Volt for MKIII
R900019801



Coil for Travel for Variable Speed Motor
RC8058Y16 / R902602670



Alternator for MKIV
R0-3183005-0-02



Pressurizer Blower Motor
RG1688P16



Proximity Sensor for the Durst Transmission
R3400890



Coil
RF026061



Electric Fan 24 Volt for Cab
RL425984



Connector Terminating
R414751



MKIV HD Speed Sensor Rear End
R2006509



Master Switch for Battery on MKIV
R0-3180004-0-04



Barksdale Pressure Switch
R96201



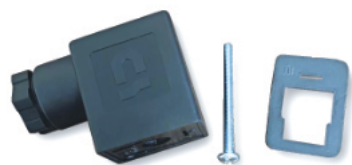
Bullet Projector Assembly
R5033792



String Pot 30" .024 String (Jupiter) MKIV
R0-3137013-0-14



String Pot 30" .024 String (Non-Jupiter) MKIV
R0-3137013-0-13

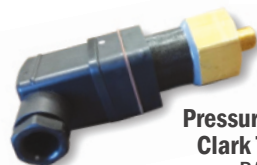


Socket Head DIN Connect Adapters
R100570

Stator Rewound and Notched (Exchange with Rebuildable Core)
RE-1404809-0-01



Hydraulic Valve Connector MKIV
R0-3230020-0-01



Pressure Switch MKIV Clark Transmission
RA7081Y13



Air Dryer 24 Volt or 12 Volt
RC9785X15 / R2003175

(Please specify.)



Connector Assembly
R3406480



Neutral Switch
R414442



**17" Touch Screen Monitor with Cable
for Jam Box**
R2014998

MKI, II, III, IV SURFACING/LINING





**MKIV Shadow Board
Frame Weldment**
RC0780VAB



Base Weldment 20 1/2"
RD4441WAA / R4102300

HD Base Weldment 17 1/2"
R4012300



Vertical Tube for Base Weldment
RC8826XASB / R4012337



Axle Mount for Buggy
RA6819WAA



Buggy Axle Weldment
RA8215XAA



**Shadow Board Wheel
with Bracket**
RA0219WAA - Right Hand
RA0219WAB - Left Hand



**Receiver and
Shadow Board Wheel
Assembly and Axle
- No Bracket**
RA0219WAAB



**Buggy Support Weldment Upper
Complete with Air Cylinders
and Lock Pins**
RH5932VAA



**Complete Quick Deployment Buggy Air Lock
Conversion Kit with Upper Buggy Support Weldment**
R9254-217-COMLETE



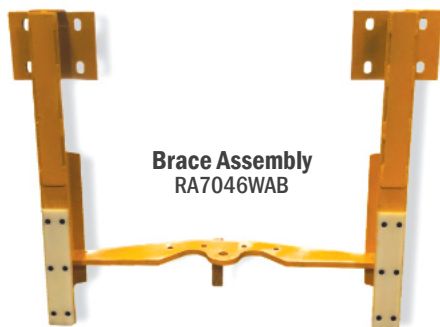
**Old Style Buggy Support Bracket
No Air Cylinders**
RA704WAD



Spring Extension Air Cylinder
R0-3470019-0-18



Buggy Weldment
RG7721WAA



Brace Assembly
RA7046WAB

**Needing a custom
assembly or kit?**

Let us know if your maintenance-of-way crew has specific needs. We will work with you to find the best solution for your rail maintenance projects!



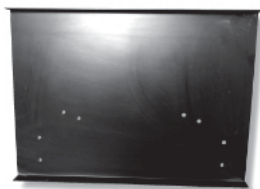
Quick Deployment Buggy Air Lock Conversion Kit
R9254-217



**Quick Deployment
Storage Bar**
RA7367X01



MKIII, IV Light Shield (Splashboard)
RA8786X03



Right/Left Liner Flag
RA0900W01



New MKIV VME Slow Speed Linear Actuator Connector MKIII, IV
RC0046XAA



Male Rod End 1/2"
R0-3652053-0-02



Insulating Bushing for Receiver Buggy
RZ752202-0-001



Insulating Washer for Receiver Buggy
RZ762124-001

Rebuilt MKIV VME Slow Speed Linear Actuator Connector MKIII, IV
RC0046XAARB

MKIII, IV Linear Actuator Assembly VME
RC0046XAB



Pivot Pin
RA0926Y01



1/2" Fine Thread Male Rod End with Stud for Liner Projector
RD4827Y01

MKIII 1/2 Encoder Wheel Bracket
R0-2202624-0-01

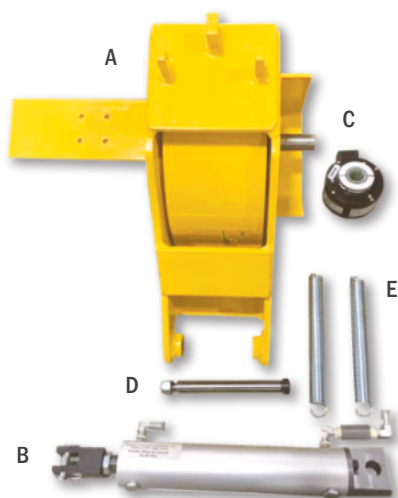


New Linear Actuator for Jupiter with Turck Connector IV
RC0046XAC-N

Rebuilt Linear Actuator for Jupiter with Turck Connector IV
RC0046XACRB



Actuator Boot
RA7347Y01



(A) Encoder Wheel Assembly - Complete
R69427WA6

(B) Encoder Wheel Air Cylinder
RA1901YAA

(C) Encoder
R5004402

(D) Shoulder Bolt for Encoder
RZ752500-041

(E) Spring for Bias Buggy on Projector Buggy
RL4103356



Linear Actuator for Mechanic Chair
RC8681X01



Hexagon Bearing MKIII, IV for Guide Assembly Flag Liner, Surface
RA2932Y01



Support Arm Assembly MKIII & MKIV Actuator Support
RB4838XAA



Inner Tube Guide
RC6475XAA



Guide Assembly Flag
RA9091XAA



Infrared Lens
R4028400



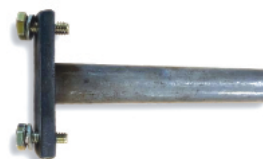
New Style MKIV Projector Buggy
Comes with wheels, axles, mounting brackets for cable junction box, lazer box and the aluminum lazer buggy bracket.
Excludes Cradle
R5060788



Buggy Lock-Up Bracket
RA8205WAA



Bare Project Buggy Complete
(No Projectors, Cradle or Lasers)
MKIV with 4 Wheels
RA8235VAC



Pivot Pin for Front Buggy
R0-2306204-0-01



Mount for Bias Cylinder
R5045869



Projector Buggy Bias Air Cylinder
R0-3470019-0-06



Wheel Shaft Kit for Projector Buggy MKIII, IV
R0-1304933-0-01-KIT



MKIII MKIV Front Buggy Lift Valve
RL410606



Axle Weldment, Front
R5056266



Chain for Bias Buggy on Projector Buggy 2 Feet
RL422283

RCR Part #	Part Description	Qty
R0-1304933-0-01	Wheel Shaft for Projector Buggy MKIII, IV	1
RL40008	5/8 Lock Nut	1
RZ685917	Insulating Bushing	1
RZ62175	Insulating Washer	2
R33863	5/8 Flat Washer for Buggy Axle	1
RZ750057	Nylon Washer for Buggy Wheel	1



Insulating Bushing
RZ685917



Spring for Bias Buggy on Projector Buggy
RL4103356



10" Aluminum Buggy Wheel with Axle
R0-2201452-0-01



Weldment, Pivot Axle 56.5 GA
R5044879



Insulating Washer
RZ62175



5/8 Flat Washer for Buggy Axle
R33863



Snap Ring for the Bias Cylinder or Buggy Wheel
RL40001



5/8 Lock Nut
RL40008



Pivot Axle
RA1109YAA



**Projector Buggy
Wear Pad**
RA7019Y01

**Slide Pad Shim for Receiver
Buggy Slide Pad MKIV**
RD1009Y01



**Slide Pad Shim for Receiver
Buggy Slide Pad MKIV**
RD1009Y03



Slide Pad Shim for Receiver Buggy MKIV
RD1009Y02



Receiver Buggy Slide Pad
RC0679Y01



**MKIV Air Bias Cylinder for Receiver
and Shadow Board**
RG5869Y01

Complete with Air Fitting and Rod Ends
Part # R0-2303635-0-06



**MKIV Shadow Board
Lift Cylinders**
RC0839Y01



**Spacer for Shadow
Board Wheel**
RZ752201



**Screw for Receiver Buggy
Slide Pad and Shim**
RA0042009



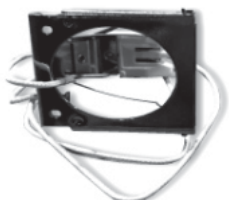
**Receiver Arm
Tube Weldment**
RD4427XAA



**Photocell Reflector
Assembly for Surface**
MKI, II, III, IV Lead Sulfide
RL410284



**Projector Bulb
MKI, II, III, IV**
RB9263Y01



Bulb Holder MKI, II, III, IV
RC8106Y01



Lock Pin 3/4"
R4000334 / RH403Y01



Lock Pin 1"
R4000335 / RH4023Y02



Clevis
R0-3014001-0-08



Double Action Air Cylinder MKIV
R0-3470019-0-14



Buggy Lift Cylinder 1" Shaft MKIV
RA1593Y12 / RG7733YAA



**Adapter Plate Assembly
Projector Liner Base**
RY690486



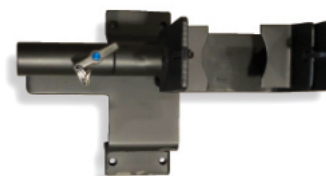
Actuator Guide
RC8834WAA



Bullet Projector Assembly
R5033792



Bullet Projector Assembly MKIV
R5033556



Bullet Projector Light Mount MKIV
R5034309



New Double Barrel Receiver
R4007012

Double Barrel Exchange Only
(Must have Rebuildable Core)
R4007012EX

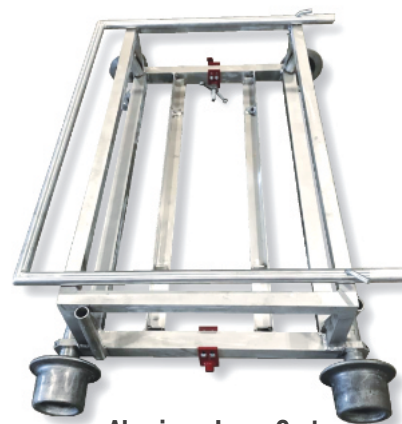


RG7897WAA / R5056896
RG7897WAA-C (Wired)

Complete Rapid Deployment Roller Buggy MKIV Heavy-Duty (No Wiring)



New Style Easy Repair for Rapid Deployment End Cap
R0-3652049-0-01-NS

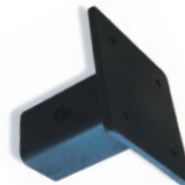


Aluminum Laser Cart for MKIV Buggy
R2014332



D05 Valve Assembly Squeeze Cylinder for MKIV / Direction Hook Valve for MKIV, Clamp Valve
R0-3333037-0-09

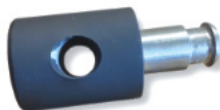
Projector Mounting Bracket
R0-2304178-0-01



Extension Bar
R0-1500299-0-18



MKIV Cradle Assembly
R0-2100917-0-11



Upper Pin Retainer for Buggy MKIV
R4011214



Steel Extension Arm
R5036083



75-Degree Bias Wheel with Bracket
R0-2302071-0-05



60-Degree Bias Wheel and Bracket
R0-2302071-0-04



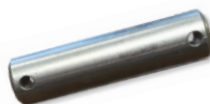
Projector Liner Carriage Support Bracket
RX763526-001



Cradle Bracket for Buggy
RX763526-003



Bias Wheel for Projector Buggy
RC1695X01



Two Hole Pin
RA0973T24



Pusher Buggy Pin with (2) 1/4 - 20 x 5/16 Socket Head Set Screw
RA0957T45



Bias Wheel Insulating Kit
RZ750036-KIT

RCR Part #	Part Description	Qty
RZ750036	Insulating Plate	1
RZ685611	Insulating Tubes	3
RZ750057	Insulating Washers	8

Pin for Buggy Lift
RC0584Y01



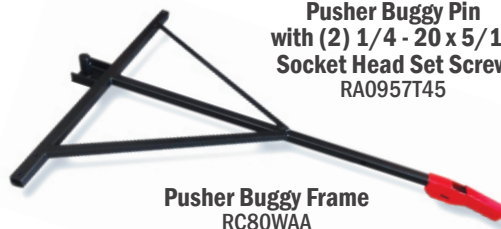
Insulating Plate
RZ750036



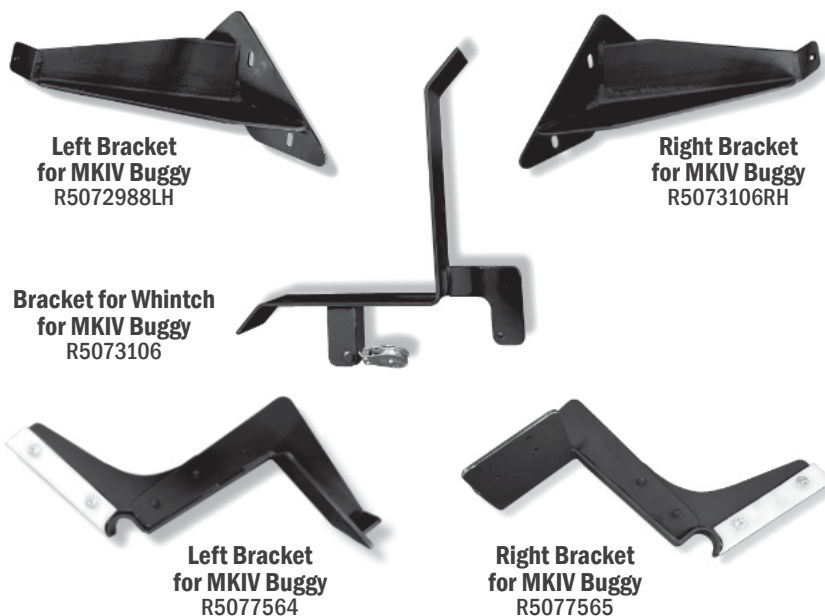
Insulating Washer
RZ750057



Aluminum Buggy Wheels
RX685831



Pusher Buggy Frame
RC80WAA



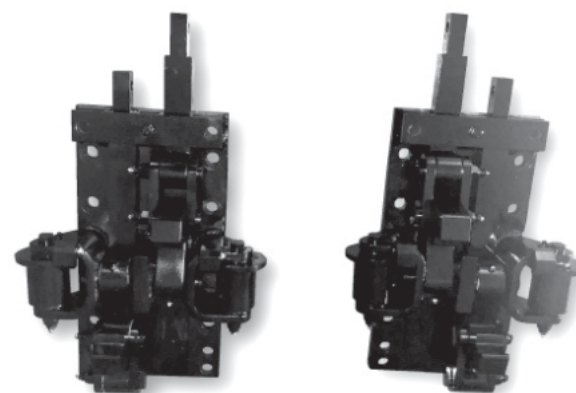
**Left Bracket
for MKIV Buggy**
R5072988LH

**Right Bracket
for MKIV Buggy**
R5073106RH

**Bracket for Whintch
for MKIV Buggy**
R5073106

**Left Bracket
for MKIV Buggy**
R5077564

**Right Bracket
for MKIV Buggy**
R5077565

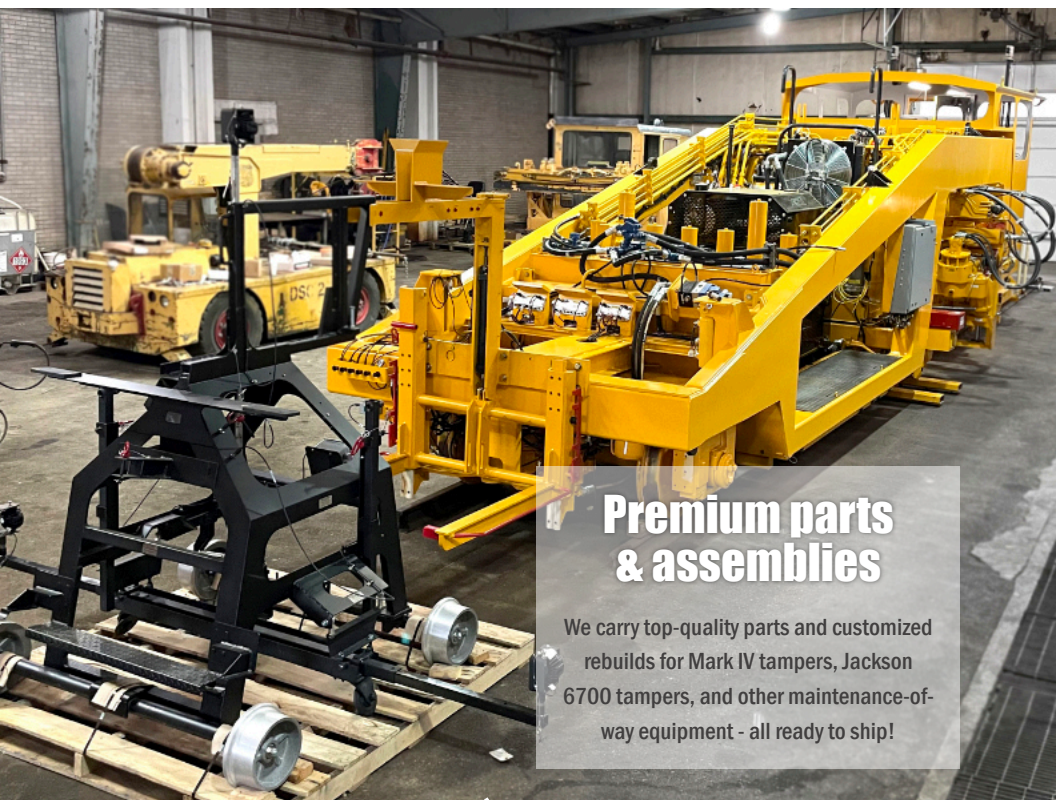


Rail Clamp Assembly Complete Left
MKI, II, III, ECTRT, TR10
RW68348L

Rail Clamp Assembly Complete Right
MKI, II, III, ECTRT, TR10
RW68348R

Rail Clamp Assembly Left - Exchange
MKI, II, III, ECTRT, TR10
RW683484LEX

Rail Clamp Assembly Right - Exchange
MKI, II, III, ECTRT, TR10
RW683484REX



**Premium parts
& assemblies**

We carry top-quality parts and customized rebuilds for Mark IV tampers, Jackson 6700 tampers, and other maintenance-of-way equipment - all ready to ship!



Liner Flex Cable 180"
R0-3626005-0-02



Spacer
RH0323Y01



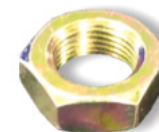
Gimbel Assembly
R0-2303638-0-03



**MKIII, MKIV Shadow Board
with 3/4 Fine Thread**
R0-3652048-0-01



3/4" Heavy Lock Washer
RA0061024



3/4-16 Heavy Jam Nut
RA0056035



Shadow Board Axle
RZ752197



Threaded Rod 13" Long
RA0601T45



**Spacer for Air Cylinder
for Shadow Board**
RA0215T46

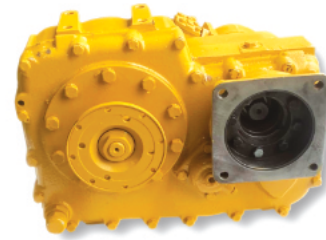


Two Hole Pin
RB5391T82 / RA0973T22

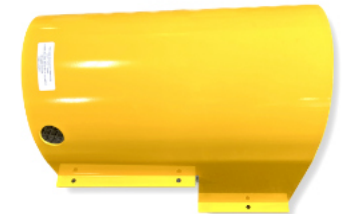


MKI, II, III, IV DRIVETRAIN





**Rebuilt MKIV Clark Transmission
(Exchange Only)**
RD4664Y02-REX



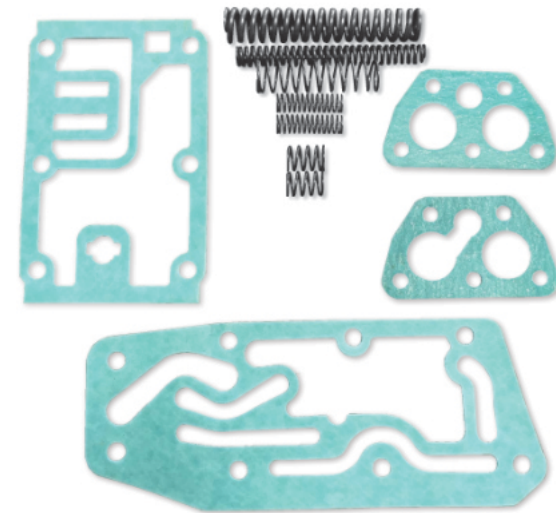
**Chain Guard
for MKIV Clark Transmission**
RD6244W01



**Electric Control Valve Assembly
for Clark Transmission
(Exchange Only)**
RD8489P64



Clark Transmission Coil
RD8506Y01



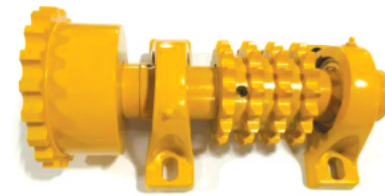
**Spring End Gasket Kit
for MKIV Transmission**
RD8489P64-9TE1



MKI/MKII Complete Center Axle Suspension Assembly
RW690833-02CW



Complete Rebuilt Carrier with Ring and Pinion (must have rebuildable core)
RL423539-R



Jack Shaft Assembly MKIII, IV
R0-2304402-0-55



Funk Speed Sensor MKIV
RB8668P31 / R0-3110025-0-08

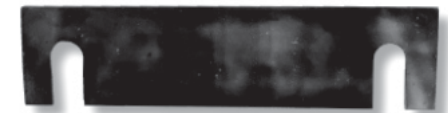
Ring Gear Carrier
RL424128



3rd Member MKI/MKII (does not include Ring and Pinion)
RL423539



Bearing Shim
RD7603Y02



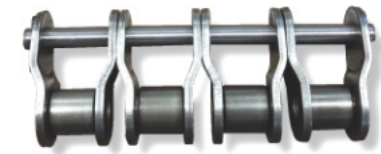
Shims
RD7603Y01



Ring Gear and Pinion
RL423560



MKIII, IV Split Drive Sprocket
R0-1303161-0-01



80 x 4 Offset Links
R0-1405840-0-01



Guide Assembly for MKIV Brake Assembly
R4015002



Drag Link
R4014888



MKIV Front Two-Speed Transmission Rebuilt
RB9691X01-RB



MKIII Riveted Roller Chain
R0-1405839-0-03



Single 60-1 Traverse Chain 10ft Sections with Master Link
R0-1302082-0-01 / RA1294Y01



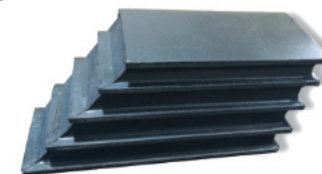
Two-Speed Air Shift Cylinder Kit - Two-Speed Funk
RA3651Y07-KIT



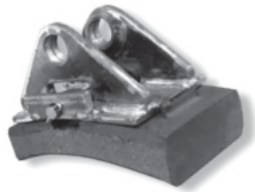
Adjustable Bracket Weldment for Funk Two-Speed Transmission Shifter
RC7642YAA

MKIII, IV Roller Chain Heavy-Duty High Tensile Strength
R0-1405839-0-01-HD

Standard Roller Chain
R0-1405839-0-01



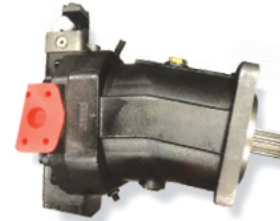
Pad/Spring
R0-3641005-0-01



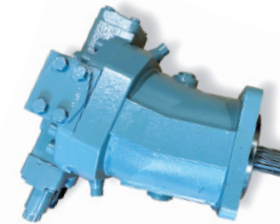
MKI, II Cobra Brake Shoe with Adapter Plate
RY54559-001S (Special)



Adjustment Screw for Rear Brake
MKIV, Jackson 6700
R223021-1



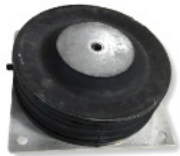
Projector Rear Variable Displacement Drive Motor IV
(Exchange Only)
RC5881Y02



Variable Displacement Motor for HD and Drone
R4029264



Dennison Rear Travel Motor MKIII
RA4124Y01D



Cab Mount MKIV
RC6337Y01



MKIII, IV Cobra Brake Shoes
R0-3683003-0-02 / R415597



Adapter for Cab Mount
R4088



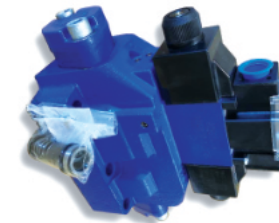
Brake Arm Key
R116716-1



Key for Brake Arm
R222947-1



MKIII Traction Motor
R0-3317006-0-08



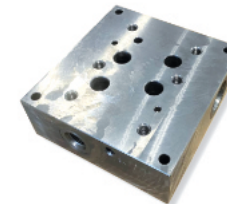
Front Drive Motor Valve Assembly MKIII
R0-3333039-0-04



MKIV HD/Drone and Jackson 6700 with (Durst Rear End) Brake Shoe
No Tabs
R218045-1 / R220550-01



Adjusting Rod End for Brake
R0-1305163-0-01



Rear Traction Subplate
RD6328X01



Front Subplate D08
R0-3361004-0-05



Spring Keeper for Break Shoe
R0-1305255-0-01



Air Break Pin
R0-3015002-0-25



MKIII & MKIV Clevis Pin for Brake Arm
R0-3015002-0-22



Brake Show Retainer
R112482-1



Need help finding something?

Just because you don't see what you need in this catalog doesn't mean we can't help you get it. We are constantly adding parts and assemblies to our stocked inventory, and we pride ourselves in helping you find just what you need. Give us a call!



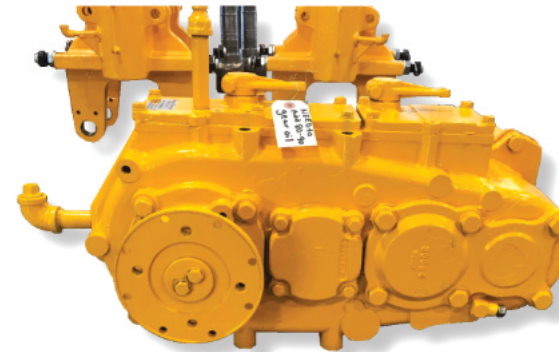
Bushing for Brakes
R0-1404558-0-01



Insulating Washer for Brakes
R0-1306629-0-01



Drone, Jackson 6700 or a MKIV Rear Brake Chamber
R350886-1



Funk 4-Speed Transmission (Exchange Only)
R0-2305242-0-02



Rework Coupling MKIV Fits Clark Transmissions
R0-1202323-0-02



Rear Transmission Link Bracket Assembly for MKIV, Drone, Jackson
R5011406-KIT

Jackson, Drone, MKIV Link
R5011406



Complete Counter Shaft Assembly (Exchange Only)
RX754110ACEX



MKIV Funk Transmission / Rear Transmission Shift Air Cylinder Kit with Rod Ends
R0-3470014-0-01-KIT

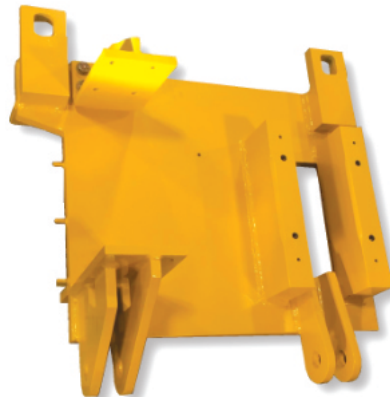


Rework Coupling Fits MKIII, MKIV with Funk Transmissions
R0-1202323-0-01



MKI, II, III Drive Belt Counter Shaft
RL40930-P

U-Joint MKIII - Rear Drive Shaft
R2055110



MKIV Transmission Mount for a Clark Transmission
RB9641WAC



MKIII Sprocket Assembly
R0-2201787-0-01



Clark Transmission Adjusting Bolt
R205217



Shift Forks for Funk Transmission
R4012752



Jupiter Clark Transmission Speed Sensor
RH5133WAS



Mann Filter for Clark Transmission
R0-3350000-0-05



MKIV Companion Flange for Clark Transmission
RD9167Y01

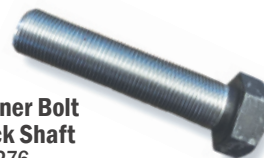


Spacer Front Axle Transmission H/D
R112497-1

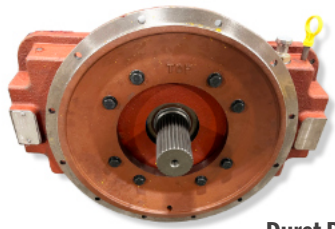
MKIII, IV Coupling for Air Shift
R0-1407202-0-01



Chain Tensioner Bolt for MKIII Jack Shaft
RA0036276



MKIII, IV Pivot Shaft
RD7597X01



Durst Pump Drive
R5004130



**Pin Weldment,
Front Transmission**
R5018125

**Steel Bushing for
Transmission Pivot
Pin (R5018125)**
R4166



Oil Seal
RD8489P01



**Funk Speed Sensor
MKIV**
RB8668P31



Screw
R250010-270



**MKIII & MKIII 1/2:
Clutch Cable -
Push-PU**
RX768469-004



**Throttle Control Cable
for MKI, II**
R0-3613000-0-01



**MKIII & MKIII 1/2:
Shift Cable**
RX768469-022



**4-Speed Funk Transmission
Companion Flange MKIII, MKIV**
RA2660P36

MKI, II, III, IV KITS





Complete Swivel Bracket Kit
RY684448-01-KIT

RCR Part #	Part Description	Qty
RY684448-01	Swivel Bracket MKI, II, III, IV	1
R4-2300189-0-01S	Floating Vertical Pin with Grease Holes Top and Bottom	1
R4-2400264-0-01	Floating Horizontal Pin with Nut & Washer MKI, II, III, IV	1
RZ68440-02S	Vibrator Connecting Pin 1 x 3 5/8" MKI, II, III, IV (Special)	2
RZ688521	Plate Lock MKI, II, III, IV	2
RA0043031	1/4" Socket Head with Lock Washer	4
	Loctite	2



Heavy-Duty Squeeze Cylinder Kit
RX68297U-KIT

RCR Part #	Part Description	Qty
RX68297U	New Heavy-Duty Squeeze Cylinder MKI, II, III, IV	1
RC5405X6	Steel 90-Degree Male Elbow 3/8" OD Tube to 1/4" NPT	2
RZ68439-01	Carrier Connecting Pin 1 x 4 1/8" MKI, II, III, IV	1
RA0068029	Cotter Pin	2
RZ68440-02S	Vibrator Connecting Pin 1 x 3 5/8" MKI, II, III, IV (Special)	1
RA0043031	1/4" Socket Head with Lock Washer	2
RZ688521	Plate Lock MKI, II, III, IV	1
RZ682674	Squeeze Cylinder Spacer (Small) MKIII, IV	2

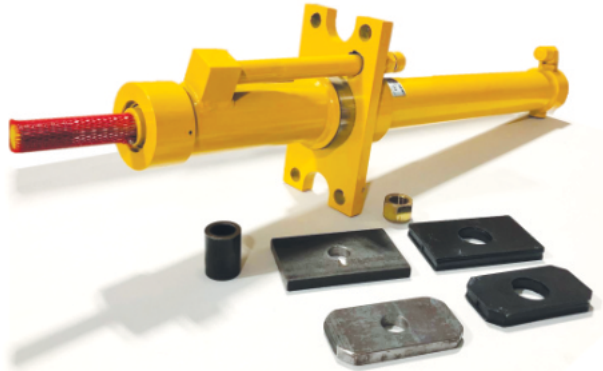


**Combo Jack Cylinder Pin and Hardware Kit Right Side
(Steel Bushing)**
R0-3095004-0-01-KIT-R/H

RCR Part #	Part Description	Qty
R0-3093401-0-01	Jack Cylinder Pin - Lower 1.5" OD MKIII, IV	1
R0-3095004-0-01	Jack Cylinder Pin - Upper 1.5" OD MKIII, IV	1
RA006830	1/4 x 1 1/2 Cotter Pin	2
RA0059012	1 1/2" Flat Washer	4
R0-3019004-0-13	Spacer (Combo Clamp) MKIII, IV	6
RZ767929-002	Insulated Spacer 1.5" Inside Diameter MKIII, IV	2
R0-1305801-0-01	Disk Xag MKIII, IV	2
RL424936	Spacer	8
RL424870	Retaining Ring MKIII, IV	2
RL424439	Spherical Bearing for Bias, Liner and Jack Cylinder	2
RD7190T06	Washer-Spacer Used in Liner Cylinder and Hook Box	6
RA6030Y02	Steel Bushing (Combo Clamp-Carrier Box 1.5" Inside Diameter) MKIII, IV	2

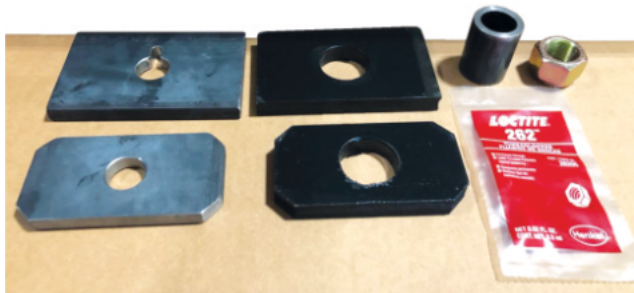
**Combo Jack Cylinder Pin and Hardware Kit Left Side
(Insulating Bushing)**
R0-3095004-0-01-KIT-L/H

RCR Part #	Part Description	Qty
R0-3093401-0-01	Jack Cylinder Pin - Lower 1.5" OD MKIII, IV	1
R0-3095004-0-01	Jack Cylinder Pin - Upper 1.5" OD MKIII, IV	1
RA006830	1/4 x 1 1/2 Cotter Pin	2
RA0059012	1 1/2" Flat Washer	4
R0-3019004-0-13	Spacer (Combo Clamp) MKIII, IV	6
RZ767929-002	Insulated Spacer 1.5" Inside Diameter MKIII, IV	2
R0-1305801-0-01	Disk Xag MKIII, IV	2
RL424936	Spacer	8
RL424870	Retaining Ring MKIII, IV	2
RL424439	Spherical Bearing for Bias, Liner and Jack Cylinder	2
RD7190T06	Washer-Spacer Used in Liner Cylinder and Hook Box	6
RA1856T04	Insulating Bushing (Combo Clamp-Carrier Box 1.5" Inside Diameter) MKIII, IV	2



**Lift Cylinder Kit
RB5761XAA-KIT**

RCR Part #	Part Description	Qty
RB5761XAA	Lift Cylinder MKIV	1
R0-1404046-1-01	Retaining Plate C MKI, II, III, IV	1
R0-1404045-1-01	Upper Cushion Mount MKI, II, III, IV	1
R0-1404574-1-01	Lower Cushion Mount MKII, III, IV	1
R0-1404575-1-01	Retaining Plate MKI, II, III, IV	1
RL424662	ESNA Nut 1"-14 for MKIII, IV Lift Cylinder	1
R0-1404047-1-01	Spacer Bushing	1



**Replacement Kit for MKIV Lift Cylinder
RB815713-KIT**

RCR Part #	Part Description	Qty
R0-1404046-1-01	Retaining Plate C MKI, II, III, IV	1
R0-1404045-1-01	Upper Cushion Mount MKI, II, III, IV	1
R0-1404574-1-01	Lower Cushion Mount MKII, III, IV	1
R0-1404575-1-01	Retaining Plate MKI, II, III, IV	1
RL424662	ESNA Nut 1"-14 for MKIII, IV Lift Cylinder	1
R0-1404047-1-01	Spacer Bushing	1

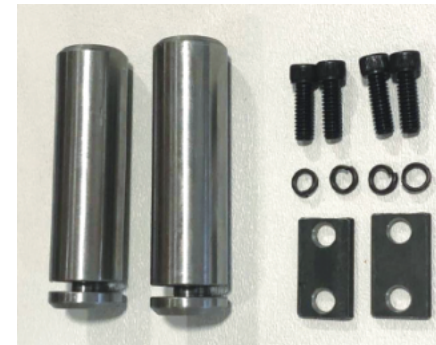


**Combo Clamp Small Roller Kit
RA1681YAA-KIT**

RCR Part #	Part Description	Qty
RA1681YAA	Roller Assembly (Combo Frame Small) MKIII, IV	1
RD6987X01	Pin Roller (Combo Frame Small) MKIII, IV	1
RL40931	Nut (Pin Roller Small) MKIII, IV	1

**Combo Clamp Large Roller Kit
R0-2305761-0-01-KIT**

RCR Part #	Part Description	Qty
R0-2305761-0-01	Roller Assembly (Combo Frame Large) MKIII, IV	1
RD6987X02	Pin For Roller (Combo Frame Large) MKIII, IV	1
R0-3011001-0-78	Nut (Pin Roller Large) MKIII, IV	1



**MKI, II, III, IV Vibrator Connecting Pin Kit
RZ68440-02-KIT**

RCR Part #	Part Description	Qty
RZ68440-02S	Vibrator Connecting Pin 1 x 3 5/8" MKI, II, III, IV (Special)	2
RZ688521	Plate Lock MKI, II, III, IV	2
RA0043031	1/4" Socket Head with Lock Washer	4



MKIV Shadow Board / Receiver Buggy Wheel Kit
RA0036331-KIT

RCR Part #	Part Description	Qty
RA0036331	Axle	1
RL40213	Bearing for Buggy Wheel	2
RZ752202-0-001	Insulating Bushing for Receiver Buggy	1
RZ752201	Spacer for Shadow Board Wheel	1
RZ762124-001	Insulating Washer for Receiver Buggy	2
RO-3011001-0-07	Lock Nut	1
RZ752199	Spacer	1
RZ752200	Spacer	1



MKIII Shadow Board / Receiver Buggy Wheel Kit
RZ752197-KIT

RCR Part #	Part Description	Qty
RZ752197	Shadow Board Axle	1
RL40213	Bearing for Buggy Wheel	2
RZ752202-0-001	Insulating Bushing for Receiver Buggy	1
RZ752201	Spacer for Shadow Board Wheel	1
RZ762124-001	Insulating Washer for Receiving Buggy	2
RZ752199	Spacer	1
RZ752200	Spacer	1
R11103993	3/4 Jam Nylock Nut	1

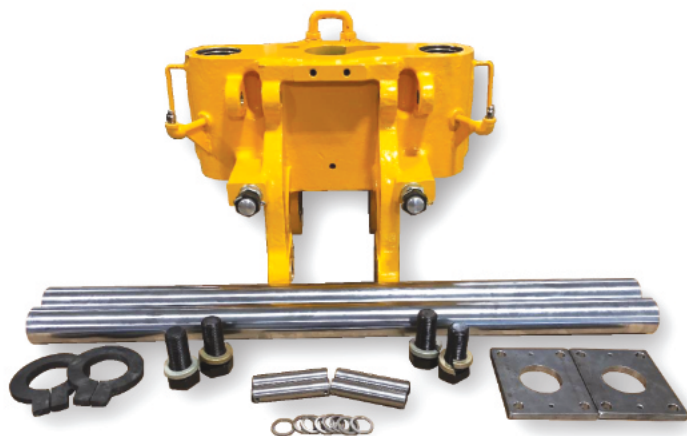


MKI, II, III, IV Carrier Hardware Kit
RZ68287-KIT

RCR Part #	Part Description	Qty
RZ68402-02	Stop Bolt with Bumper (Special Size) MKI, II, III, IV	4
RZ68287	Bronze Bushing (Carrier) with Wiper Seal & O-Ring MKI, II, III, IV	4
RZ68439-01	Carrier Connecting Pin 1 x 4 1/8" MKI, II, III, IV	4
RZ682674	Squeeze Cylinder Spacer (Small) MKIII, IV	8
RA0056015 / RF002753	1"-8 Hex Jam Nut	4
RA0061019	Lock Washer	8
RA006830	1/4 x 1 1/2 Cotter Pin	8



Projector Buggy Derail Alarm Kit
R2015



MKIII, IV Vibrator Carrier Kit
RE-2100706-0-01-K

RCR Part #	Part Description	Qty
RE-2100706-0-01LEX or RE-2100706-0-01REX	Rebuilt Vibrator Carrier MKIII, IV with Stop Bolts and Carrier Bronze L/H or R/H - Exchange (please specify right or left)	1
R0-1404016-0-01	Guide Rod 2 1/2 OD x 41 3/8" Long MKIII, IV	2
RY68375-01	Lower Cushion Pad MKI, II, III, IV	2
R0-1404015-0-01	Lower Adjusting Plate MKIII, IV	2
RZ68439-01	Carrier Connecting Pin 1 x 4 1/8" MKI, II, III, IV	4
RZ682674	Squeeze Cylinder Spacer (Small) MKIII, IV	8
RL420984	Guide Rod Bolt 1 1/4-12 x 3" MKI, II, III, IV	4
RA0061021	1 1/4 Heavy Lock Washer	4



Insulation Kit for Wheel Shaft Projector Buggy with Nut
RZ76802-001

RCR Part #	Part Description	Qty
RZ62175	Insulating Washer	2
RZ750057	Nylon Washer for Buggy Wheel	1
R33863	5/8 Flat Washer for Buggy Axle	1
RL40008	5/8 Lock Nut	1
RZ685917	Insulating Bushing	1



Hook Extend Cylinder Pin Kit
R2685110-KIT

RCR Part #	Part Description	Qty
R0-3095002-0-11	Pin - Slew Cylinder 1" OD MKIII, IV	2
RA4823Y01	Hook Extend Pin	2
RA1856T03	Bushing - Insulating (Combo Clamp - Hook) MKIII, IV	2
RA6030Y04	Bushing Steel (Combo Clamp - Hook) MKIII, IV	2
RA1072Y01	Plastic Washer (Combo Clamp 1" ID) MKIII, IV	2
RZ765375-001	Insulating Washer (Combo Clamp 1" ID) MKIII, IV	2
R0-3013001-0-05	Snap Ring for Hook Extend Cylinder Pin	4
RA0060021	1" Flat Washer	16
RA006830	1/4 x 1 1/2 Cotter Pin	4



Workhead Air Lock Cylinder Kit
RY767203-001-KIT

RCR Part #	Part Description	Qty
RY767203-001ASY	Workhead Air Lock Cylinder Assembly	1
RL410848	Lock Handle Spring	1
RL420853	90-Degree Male Pipe Adapter	1



Complete Combo Clamp Rebuild Kit (Excludes Guide Rods) R105110

RCR Part #	Part Description	Qty
RL40705	Spherical Bearing for Bias, Liner, Jack Cylinder	4
RA1072Y01	Plastic Washer	2
RL424936	Spacers	12
R0-3013001-0-05	Snap Rings	4
RA4823Y01	Hook Extend Cylinder Pins	2
R0-3095002-0-11	Slew Cylinder Pin	4
RA6030Y02	Steel Bushing Combo Clamp 1.5" ID	2
R0-3019004-0-13	Spacer	6
R0-3019004-0-01	Insulating Disc	2
RL40931	Nut - Pin Roller, Small	2
RZ765375-001	Insulating Washer (Combo Clamp 1" ID) MKIII, IV	6
RZ767929-002	Insulating Spacers	2
RA1681YAA	Roller Assembly (Combo Frame Small) MKIII, IV	2
R0-2305761-0-01	Large Wheel Roller Combo	2
R0-3011001-0-78	Large Nut Pin Roller	2
RD6987X02	Pin Roller Large	2
R0-1203075-0-01	Insulating Plate	1
R424870	Snap Rings	4
R0-3652060-0-01	Hook Bushing	4
RA1856T04	Bushing	2
R0-1305728-0-01	Brass Carrier Box Combo Clamp 3"	8
RD6987X01	Pin Roller Combo Frame Small	2
RA1856T03	Bushing	4
RA0036341	Stop Bolt Combo MKIII	4
R0-3095004-0-01	Jack Cylinder Pin - Upper 1.5" OD MKIII, IV	2
RA6030Y04	Bushing Steel Combo Clamp	2
RA1856T05	Bushing	12
R0-3393001-0-05	Wiper Seal 3"	8
R0-3393001-0-06	Wiper Seal Large 4.5"	4
R0-1305774-0-01	Bias Cylinder Pivot Pin	1
R0-2305775-0-01	Pivot Pin Bias	1
R0-3015002-0-26	Liner Cylinder Pin	2
R0-3095002-0-09	Bias Pin MKIII, IV	1
R0-3093401-0-01	Jack Eye Pin Lower	2
RA6030Y05	Spacers	8
RA0056019	Jam Nut	4
RD7190T06	Washer/Spacer for Liner Cylinder	10
RA0060021	1" Flat Washer	20
RA0059012	1 1/2" Flat Washer	10
R0-3019004-0-08	2" Flat Washer	2
RZ683490	Washer	12
RA0059008	3/4" Flat Washer	12



Treader Assembly with Brake Valve Complete
RL42296 / RL422295

Bias Cylinder Pin Kit
R265534-KIT

RCR Part #	Part Description	Qty
R0-3095002-0-09	Pin - Bias MKIII, IV	1
R0-1305774-0-01	Bias Cylinder Pivot Pin	1
R0-2305775-0-01	Pivot Pin Combo Clamp - Bias 1.5" OD MKIII, IV	1



Slew Cylinder Pin Kit Set Complete - Excludes Cylinder
RB7036WAC-KIT-W/O

RCR Part #	Part Description	Qty
R0-3095002-0-11	Pin - Slew Cylinder 1" Outside Diameter MKIII, IV, Hook Cylinder Pin	4
RZ765375-001	Insulating Washer (Combo Clamp 1" ID) MKIII, IV	4
RA0060021 / R0-3019004-0-12	1" Flat Washer	16
RA1856T03 / RZ65379-001	Bushing-Insulating (Combo Clamp-Hook) MKIII, IV	2
RA006830	1/4 x 1 1/2 Cotter Pin	4



Workhead Pin Kit (1 Side)
RZ68440-02S-KIT

RCR Part #	Part Description	Qty
RZ68440-02S	Vibrator Connecting Pin 1 x 3 5/8" MKI, II, III, IV (Special)	4
RZ68439-01	Carrier/Squeeze Cylinder Connecting Pin 1 x 4 1/8" MKI, II, III, IV	4
RZ688521	Plate Lock MKI, II, III, IV	4
RA0043031	1/4" Socket Head with Lock Washer	8



MKIV Squeeze Sandwich Flow Control Valve Kit
R5043252

RCR Part #	Part Description	Qty
R5033983	Hose Bracket for Squeeze Flow Control Kit	2
RO-3335018-0-02	Flow Control Valve D05	2
RF016945	DC - Tee 8x8 BH x 8	2
RF020452	DC - STR 4x4 BH	2
RF040408	Adapter Straight DC - STR 12x12 BH	4
RD2350Y01	Decal, Caution Lock Pins	2
RF012241	Washer, Lock, 1/4" High Collar	8
RA0041216	DC - 1/4-20 x 3-3/4 SKT HD CS	8
RF014861	CD - STR 8x8 BH	2
RF024758 / R150114-2	Adapter STR, 08J1C-SWX04J1C - Reducer	2



Dual Liner Kit
R5046160



Liner Cylinder MKIV Bias Cylinder MKIV Seal Kit
RB5430YAA



MKI, II Lift Cylinder Seal Kit
RZ687106



Squeeze Cylinder Seal Kit
RZ687107



MKIII Bias Cylinder Seal Kit
RO-3379004-0-01



MKIV 6" Jack Cylinder Seal Kit
RB5432YAA



MKIV Lift Cylinder Seal Kit + Slew Cylinder
RB5428YAA



Lock for Top Slider
RC9402Y01-KIT

Comes with RA0060018, RO-3015001-0-35, RC9402Y01, RL41005, RZ710103, RO-3015001-13



Wheel Shaft Kit for Projector Buggy MKIII, IV
RO-1304933-0-01-KIT

RCR Part #	Part Description	Qty
RO-1304933-0-01	Wheel Shaft for Projector Buggy MKIII, IV	1
RL40008	5/8 Lock Nut	1
RZ685917	Insulating Bushing	1
RZ62175	Insulating Washer	2
R33863	5/8 Flat Washer for Buggy Axle	1
RZ750057	Nylon Washer for Buggy Wheel	1



Sliding Axle Seal Kit MKIV
R0-3371069-0-02



Complete Quick Deployment Buggy Air Lock Conversion Kit with Upper Buggy Support Weldment
R9254-217-COMPLETE



Quick Deployment Buggy Air Lock Conversion Kit
R9254-217



Pivot Lockout Valve Assembly
RC9088XAA

Please note: This does not come assembled for easy installation.



Oil Cooler Fan Motor Valve Assembly
RG0686XAD

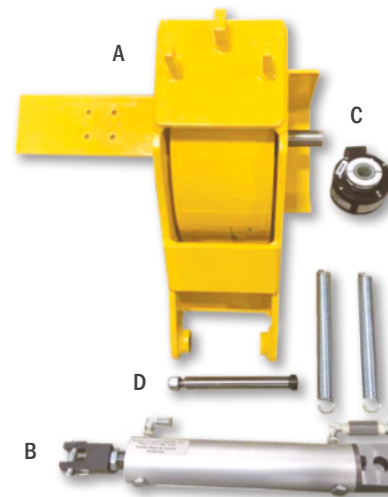


Bullet Projector Assembly
R5033792



Bias Wheel Insulating Kit
RZ750036-KIT

RCR Part #	Part Description	Qty
RZ750036	Insulating Plate	1
RZ685611	Insulating Tubes	3
RZ750057	Insulating Washers	8



(A) Encoder Wheel Assembly – Complete
R69427WA6

(B) Encoder Wheel Air Cylinder
RA1901YAA

(C) Encoder
R5004402

(D) Shoulder Bolt for Encoder
RZ752500-041

(E) Spring for Bias Buggy on Projector Buggy
RL4103356



Rear Slider Kit for 1 Frame
RC0694XAA-KIT

RCR Part #	Part Description	Qty
RZ750978	1/2" Drilled Bolts	10
RA0061023	Heavy Duty 1/2 inch Lock Washer	10
RA0042024	Screw Allen FLT HD 1/2-13 x 1-1/4	5
RC0693X01	Shim Support Block	4
RC0694XAA	Support Block Assembly Rear Slider - 2 per Side MKIII, MKIV	2



Top Slider Pad Replacement Kit
RO-1304828-0-1S-KIT

RCR Part #	Part Description	Qty
RO-1304828-0-01S / RG0852YAA	Slide Pad - No Notch with Threaded Inserts MKI, II, III, IV	2
RO-1304826-0-01S	Stop Pad with Threaded Inserts (New Style) MKI, II, III, IV	2
RF00114	5/16" Drilled Bolt	12



Door Latch/Lockset
R5006704



Pressure Transducer Kit
R4015869



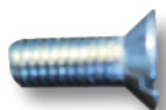
Boss O-Ring Kit for MKIV Tamper
RA4839Y01



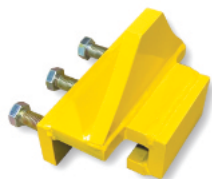
MKI, MKIV Door Latch
RL425565



Spacer, Latch Handle
R4011890



#10-32 x 1/2 FLHD MS
RA0052012



Stop Block for Rail Car
R2460860-STOPBLOCK



Swing Door Latch
R4011386

We can customize a kit for you!

If your team needs a tailored maintenance kit, just let us know. We will work with you to put together the best kit to suit your needs!

MISCELLANEOUS





**Plazer Dyna Cat GRM 3000
Liner Buggy with Wheels**
R365-832



TR10 Stabilizer Bar
R0-2202632-0-03



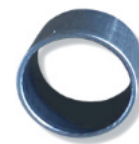
TR10 Brake Index Valve
R0-3412004-0-02



Snap Bushing 1" OD x 3/4" ID x 1"
R502549002



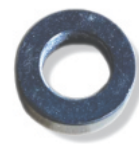
TR10 Small Tube
RB0147WAA



**Bottom Splitter
Sensor Bracket**
R0084



**Front Stabilizer Spacer
for Jackson 6700**
R222732-1



**Shift Bracket Spacer
for Jackson 6700**
R00-00555



Rail Clamp Assembly Complete Left
MKI, II, III, ECTRT, TR10
RW68348L



Rail Clamp Assembly Complete Right
MKI, II, III, ECTRT, TR10
RW68348R

Rail Clamp Assembly Left - Exchange
MKI, II, III, ECTRT, TR10
RW683484LEX

Rail Clamp Assembly Right - Exchange
MKI, II, III, ECTRT, TR10
RW683484REX



Marsh Mellow Spring
R251402-1



Shut-Off Valve MKIV,
6700, Drone, STM
RD1735Y01



Swing Arm for Spiker or Spike Puller
Fits a 2" Receiver for High Rail Truck
R4523154



Pull Rod
RY683440



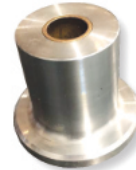
Push Rod
RY683439



Rail Shaft
RZ683432



Link Bolt
RZ683433



Rail Wheel
RY683655



Cylinder Bushing
(Rail Clamp)
RZ683488



Rail Clamp
R0-2300171-0-01



Link
RZ683435



Anti-Rotation
Washer
RA9264Y06



Clamp Bushing (Large)
RZ683436



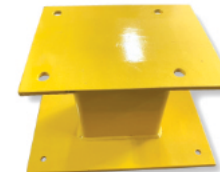
Holder Rail Sweep
for 6700
R115840-1



Plate Lock
RZ54903-001



Proximity Sensor
Bracket
R00-00100



Seat Base for 6700
R2002555



Screw-Shulder, SHC
.62 x 4.00 Jackson 6700
R250250-12



Mechanical Level Gauge
R0-3307009-0-04



Drive Belt for Kershaw 875 Regulator
R201170





NEW PARTS

New Ballast Plow Side Wing Right Hand
R96810020

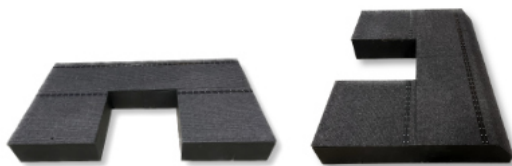
New Ballast Plow Side Wing Left Hand
R96810019



REBUILT PARTS

Rebuilt Ballast Plow Side Wing Right Hand
(Must have core to rebuild)
R96810020-RB

Rebuilt Ballast Plow Side Wing Left Hand
(Must have core to rebuild)
R96810019-RB



MKIV Cab Storage Box
R1723



Platform inside Middle
R2014218

Heavy duty, top of the line.

With our in-stock, ready-to-ship parts and assemblies, you can be sure you are getting top quality items that will increase your equipment's efficiency and durability. Just let us know what you need.

JACKSON 6700, PD, 3300



Contact us for our
**Jackson Tamper
Parts Catalog**

Unbeatable workhead rebuilds and top quality parts.

RCR offers new and rebuilt parts and assemblies for the Jackson 6700 Tamper.

We take used OEM parts and rebuild them to like-new condition.

From workheads to jack beams to vibrators, we have shelves stocked with top-of-the-line, durable parts. Other assemblies we have in stock are folding tongues and rapid-deployment buggies. All ready to ship!

As industry veterans, we can answer any product questions you may have, make recommendations or help you troubleshoot your machine over the phone. Contact us today!



(217) 268-5110 | sales@rrcri.com | www.rrcri.com



SPIKE PULLER ASSEMBLIES



Give your Spike Puller a face lift with our rebuild & upgrade assemblies.

You won't recognize your puller machine with our no-nonsense, rebuilt spike puller heads.

We take used spike puller heads and build them back to their original OEM specifications using top quality components. With new, heavy-duty steel claw arms and bushings, we create an optimal, highly-durable assembly that delivers every time and is easier on your budget.

And the best part? Our rebuilt spike puller heads are always in stock and we ship out the same day!

(217) 268-5110 | sales@rrcri.com | www.rrcri.com



PRE-GAUGERS



Leave no room for error with our newly engineered Pre-Gaugers.

Our Pre-Gaugers are perfect for gangs installing new rail. They measure the distance between the rails and situate new rail exactly where it needs to be.

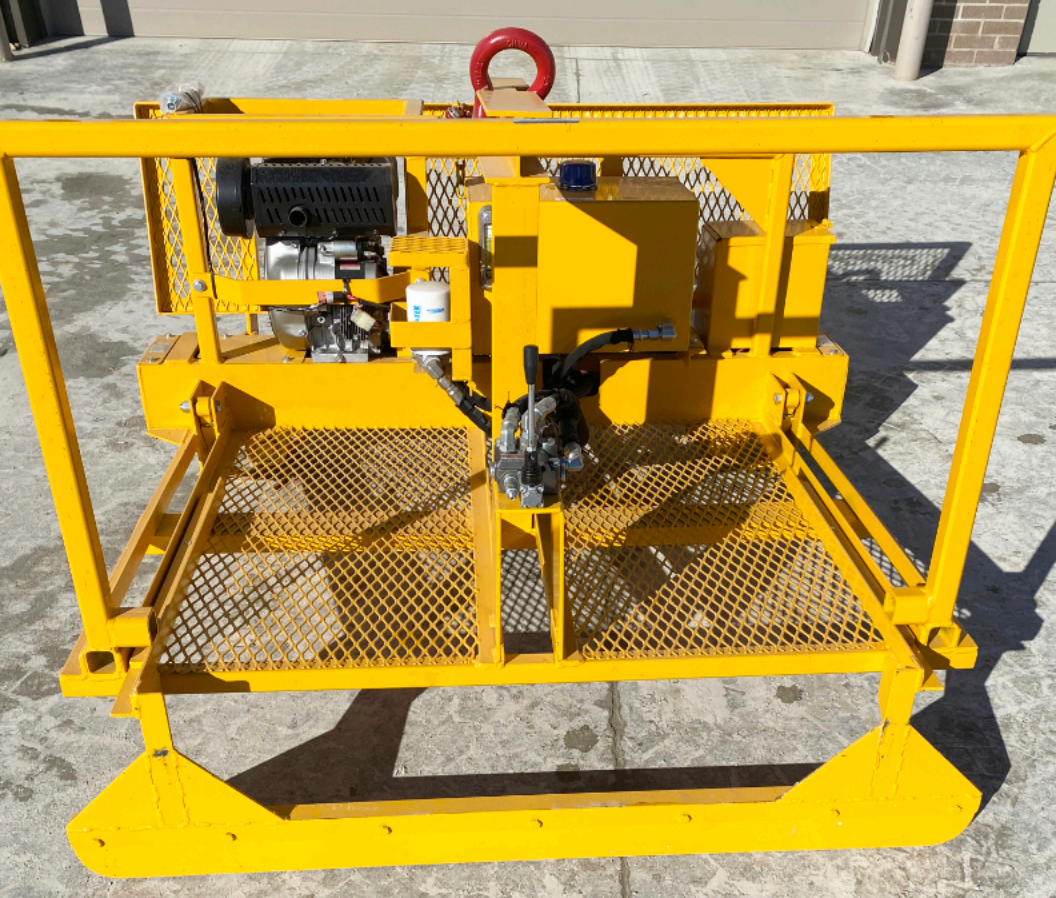
One side of this Pre-Gauger features rail wheels that ride down one side of the track. Its other side gauges the distance between the tie plates and ensures that they are precisely where they need to be. The Pre-Gauger makes sure the plates are already in position when new rail is going in.

Add an extra safety measure and make new rail installation easier with our made-from-scratch Pre-Gaugers. We have them in stock and ready to ship.

Contact us today for a quote.

(217) 268-5110 | sales@rrcri.com | www.rrcri.com





REMOTE CONTROL QUALITY CARTS



Our one-of-a-kind Quality Carts make your job easier.

Our fully-customized Quality Cart follows behind your tie gang. Once the gang finishes replacing ties, this Quality Cart goes behind the gang and drives spikes where a spike is missing or was not driven in all the way.

Designed to hold 20,000 pounds of material, our quality cart can haul anything the job requires. You can transport anything you need to on it. Besides holding spikes, you can carry hammers to drive spikes in by hand.

To make your job even easier, we have incorporated a swing arm on the back of the cart, in which you can hook up a hydraulic spiker gun or spike remover.

We also offer the parts to keep your Quality Cart serviced and operating seamlessly. Just give us a call!

(217) 268-5110 | sales@rrcri.com | www.rrcri.com





R00-00100	141	R0-2202634-0-11	44
R00-00555	139	R0-2202634-0-011	43, 72
R0-201052-0-05	15	R0-2203017-0-01	18
R0-1101325-0-09	36, 64	R0-2300171-0-01	141
R0-1101329-0-01S	36, 64	R0-2302071-0-04	103
R0-1202323-0-01	115	R0-2302071-0-05	103
R0-1202323-0-02	115	R0-2302202-0-01	79
R0-1202626-0-01	30	R0-2303363-0-03LHD	22
R0-1202627-0-01	30	R0-2303363-0-04RHD	22
R0-1203075-0-01	42	R0-2303635-0-02	71
R0-1302082-0-01	31, 111	R0-2303635-0-06	69-70, 100
R0-1302117-0-01	23	R0-2303638-0-03	105
R0-1303161-0-01	111	R0-2304178-0-01	103
R0-1303686-0-01	17	R0-2304402-0-55	111
R0-1303949-0-01	16	R0-2305242-0-02	115
R0-1304826-0-01S	32	R0-2305347-0-01	78
R0-1304827-0-01	32	R0-2305350-0-01	78
R0-1304828-0-01S	32	R0-2305351-0-01EX	78
R0-1304828-0-1S-KIT	28, 135	R0-2305761-0-01	46
R0-1304933-0-01-KIT	99, 131	R0-2305761-0-01-KIT	123
R0-1305163-0-01	112	R0-2305775-0-01	42
R0-1305255-0-01	112	R0-2306204-0-01	99
R0-1305728-0-01	44	R0-2306408-0-01	79
R0-1305757-0-01	46	R0-3013001-0-05	45
R0-1305774-0-01	42	R0-3014001-0-08	101
R0-1305832-0-01	30	R0-3014001-0-12	45, 70
R0-1305835-0-01	30	R0-3015002-0-22	112
R0-1305836-0-01	30	R0-3015002-0-25	112
R0-1305837-0-01	29	R0-3015002-0-26	44
R0-1305839-0-01	30	R0-3015002-0-28	31
R0-1305840-0-01	30	R0-3019004-0-01	41
R0-1306629-0-01	114	R0-3019004-0-08	42
R0-1404015-0-01	33	R0-3019004-0-12	44
R0-1404016-0-01	33	R0-3019004-0-13	41
R0-1404045-1-01	26	R0-3093401-0-01	46
R0-1404046-1-01	26	R0-3095002-0-9	42
R0-1404558-0-01	114	R0-3095002-0-11	43
R0-1404574-1-01	26	R0-3095004-0-01	46
R0-1404575-1-01	26	R0-3095004-0-01-KIT-L/H	121
R0-1405505-0-01	23	R0-3095004-0-01-KIT-R/H	120
R0-1405839-0-01	111	R0-3101019-0-33	87
R0-1405839-0-01-HD	111	R0-3101019-0-36	87
R0-1405839-0-03	111	R0-3110025-0-08	111
R0-1405840-0-01	111	R0-3112001-0-02	82
R0-1406298-0-01	72	R0-3115000-0-02	86
R0-1407202-0-01	72, 114	R0-3119003-0-02	79
R0-1500299-0-18	103	R0-3137013-0-13	34, 89
R0-2100706-0-01	25	R0-3137013-0-14	34, 89
R0-2100917-0-11	102	R0-3137013-0-16	84
R0-2201452-0-01	98	R0-3150017-0-01	78
R0-2201787-0-01	115	R0-3150021-0-03	82
R0-2202624-0-01	96	R0-3160001-0-04	86
R0-2202632-0-03	139	R0-3180004-0-04	72, 88
R0-2202634-0-01	43	R0-3183005-0-02	88

R0-3230020-0-01	88	R0-3412004-0-02	71, 139	R112482-1	112	R3401339	84
R0-3231007-0-53	84	R0-3413001-0-04	69	R112497-1	115	R3406480	90
R0-3237004-0-01	79	R0-3413003-0-15	66	R115840-1	141	R3427735	85
R0-3237004-0-02	79	R0-3413005-0-18	66	R116716-1	112	R4000334	101
R0-3307009-0-04	141	R0-3432000-0-02	67	R171463-1	78	R4000335	101
R0-3316003-0-04	60	R0-3470014-0-01	70	R172164 / CR1330	60, 82	R4007012	80, 101
R0-3317006-0-08	54, 113	R0-3470014-0-01-Kit	70, 115	R191243	69	R4007012EX	80, 101
R0-3321014-0-02	18, 54	R0-3470019-0-06	70, 98	R201170	141	R4008071	68
R0-3333010-0-08	56	R0-3470019-0-14	70, 101	R201428	35	R4008253	68
R0-3333037-0-08	55	R0-3470019-0-18	71, 95	R205217	115	R4008374	71, 86
R0-3333037-0-09	55, 58, 103	R0-3470022-0-02	68	R216059-2	18	R4011214	102
R0-3333037-0-10	56	R0-3470023-0-06	70	R217512	16	R4011386	134
R0-3333037-0-18	56	R0-3470025-0-01	69	R218045-1	112	R4011890	134
R0-3333037-0-19	56	R0-3502003-0-08	80	R220550-01	112	R4012300	93
R0-3333039-0-04	58, 113	R0-3502007-0-02	87	R222732-1	139	R4012337	93
R0-3333039-0-05	56	R0-3502050-0-01	80	R222947-1	112	R4012702	17, 54
R0-3333056-0-11	58	R0-3613000-0-01	116	R223021-1	112	R4012752	115
R0-3334011-0-03	57	R0-3624021-0-01	29	R250010-270	116	R4014888	110
R0-3334011-0-06	57	R0-3624024-0-04	86	R250250-12	141	R4015002	110
R0-3334013-0-05	63	R0-3625033-0-01	29	R251402-1	140	R4015376	82
R0-3334026-0-04	58	R0-3626005-0-02	105	R265534-KIT	129	R4015869	134
R0-3334049-0-01	67	R0-3641000-0-19	44	R350204-1-09	54	R4016221	83
R0-3334057-0-07	62	R0-3641005-0-01	111	R350886-1	114	R4016317	53
R0-3335012-0-01	36, 64	R0-3652048-0-01	105	R414260	82	R4018523	83
R0-3335018-0-02	55	R0-3652049-0-01-NS	102	R414272	83	R4019452	76
R0-3335024-0-11	63	R0-3652053-0-02	88, 97	R414273	83	R4019453	76
R0-3335024-0-12	62	R0-3652060-0-01	46	R414277	83	R4020299	59, 75
R0-3335031-0-15	62	R0-3683003-0-02	112	R414278	83	R4022370	84
R0-3336002-0-01	62	R0-33336024-0-06	61	R414442	90	R4022695	79
R0-3336024-0-06	61	R0-34710007-0-01	71	R414751	89	R4022817	76
R0-3336024-0-07	56	R02-304251	59, 75	R415597	112	R4024650	54
R0-3339031-0-01	60, 89	R4-2300189-0-01S	23	R510259	83	R4024664	54
R0-3339031-0-08RX	60, 89	R4-2400264-0-01	23	R2002555	141	R4028347	22
R0-3339041-0-13	58, 75	R0084	139	R2003175	89	R4028349	22
R0-3350000-0-05	115	R365-832	139	R2005990	77	R4028400	97
R0-3350004-0-06	60	R620-081465	53	R2006042	35, 79	R4028741	76
R0-3354005-0-04	55	R1723	142	R2006043	35	R4029264	54, 113
R0-3354005-0-09	55	R2015	125	R2006509	88	R4029520	55
R0-3360011-0-06	62	R2018	85	R2013714	83	R4031474	83
R0-3361004-0-01	72	R2019	85	R2014218	142	R04082019	82
R0-3361004-0-05	61, 113	R2020	87	R2014332	103	R4102300	93
R0-3364012-0-02	61	R2021	87	R2014998	90	R4523154	140
R0-3364033-1-01	64	R4088	112	R2055110	114	R5000347	83
R0-3364040-0-01	63	R4166	116	R02203041-0-01	43	R5001513	86
R0-3366046-0-01	61	R5110-268	33	R2460860-HOOK	52	R5004130	116
R0-3371069-0-01	71	R9254-217	95, 132	R2460860-JACK	52	R5004402	71, 86, 96, 133
R0-3371069-0-02	132	R9254-217-Complete	95, 132	R2460860-LIFT	52	R5004639	59, 75
R0-3372001-0-01	31, 52, 86	R17983	47, 64	R2460860-LINER	52	R5004649	59, 75
R0-3379004-0-01	131	R33407-01	81	R2460860-SLEW	52	R5006344	66
R0-3393001-0-05	43	R33863	99	R2460860-STOPBLOCK	134	R5006704	134
R0-3393001-0-06	43	R69427WA6	71, 96, 133	R2685110-KIT	47, 127	R5007782-Kit	24
R0-3401000-0-06	62	R96201	72, 88	R2949389	77	R5007825	58
R0-3401000-0-09	61	R100570	69, 88	R3059110	24	R5007907-Kit	24
R0-3401000-0-13	61	R105110	40, 128	R3400890	88	R5008006	80

R5011406	114	R902436104	53	RA3651Y07-Kit	71, 110	RA0060021	44
R5011406-KIT	114	R902602670	60, 89	RA4057Y01	63	RA0061021	33
R5013800	64	RA0151Y28	64	RA4124Y01D	54, 113	RA0061024	105
R5015210	76	RA0215T46	105	RA4490Y03	58	RB0147WAA	139
R5018125	116	RA0219WAA	93	RA4490Y07	56	RB487Y01S	18
R5021173	21	RA0219WAAB	93	RA4771Y04	45, 70	RB0839XAAEX	78
R5021207	35	RA0219WAB	93	RA4823Y01	44	RB0841XAA	77
R5021216	35	RA0601T45	105	RA4839Y01	59, 135	RB0881Y03	87
R5025804	54	RA0653Y01	81	RA4877XAA	29	RB0941WAB	77
R5027624EXS	15	RA0655Y02	87	RA4881Y01	29	RB0943WAA	77
R5033556	80, 101	RA0655Y07	81	RA5041WAA	139	RB0970Y18	77
R5033792	89, 101, 133	RA704WAD	94	RA5045Y01	68	RB0970Y20	77
R5034309	101	RA0713Y11 / 4029715	53	RA5045Y02	68	RB1348Y02	81
R5036079	80	RA0728Y18	54	RA5287VA	22	RB1348Y03	81
R5036083	103	RA0729Y06	59, 75	RA5354V01	61	RB1657Y08	36, 47, 64
R5038083	53	RA0730Y04	59, 75	RA5553W01	44	RB1813XAB / RCL2015	83
R5043252	130	RA0900W01	96	RA5748Y01	64	RB2455X01	34
R5044879	98	RA0926Y01	88, 97	RA6030Y02	41	RB4068Y15	59, 75
R5045869	98	RA0957T45	102	RA6030Y04	46	RB4838XAA	97
R5045881	70	RA0973T22	105	RA6030Y05	41	RB5391T82	105
R5046160	131	RA0973T24	102	RA6229X01	43	RB5428YAA	131
R5047427	31	RA1070Y19	62	RA6233X01	43	RB5430YAA	131
R5048566	83	RA1070Y29	62	RA6519Y01	67	RB5432YAA	131
R5054725	21	RA1072Y01	45	RA6733Y02	43	RB5548Y08	55
R5054725_B	21	RA1109YAA	98	RA6819WAA	93	RB5548Y09	55
R5054730	83-84	RA1176VAAL-C	32	RA7019Y01	100	RB5705XAB	42, 52
R5055209	21	RA1176VAAR-C	32	RA7046WAB	94	RB5705XAF	45, 51
R5055209_B	21	RA1215Y07	56	RA7081Y13	68, 88	RB5708XAA	45, 51
R5056266	98	RA1294Y01	31, 111	RA7105Y01	34	RB5715XAA	45, 51
R5056896	102	RA1441X01	36	RA7163T66	46	RB5715XAB	45, 51
R5059188	70	RA1458V01	61	RA7347Y01	97	RB5715XAD	45, 51
R5060044	70	RA1556Y06	87	RA7367X01	95	RB5715XAE	45, 51
R5060788	98	RA1556Y08	87	RA7608VAAEX	39	RB5761XAA	23, 51
R5072988LH	104	RA1556Y09	87	RA7608VAKEX	39	RB5761XAA-KIT	122
R5073106	104	RA1556Y21	87	RA8205WAA	99	RB7036WAA	43
R5073106RH	104	RA1593Y12	101	RA8215XAA	93	RB7036WAA	43, 51
R5074799	55	RA1681YAA	46	RA8235VAC	99	RB7036WAC	51
R5077564	104	RA1681YAA-KIT	123	RA8288X01	41	RB7036WAC-KIT-W/O	129
R5077565	104	RA1787Y24	76	RA8786X03	96	RB7487Y01	18
R5090719	76	RA1856T03	46	RA9091XAA	97	RB8668P31	83, 111, 116
R5090720	76	RA1856T04	41	RA9264Y06	141	RB9263Y01	80, 100
R5090721	76	RA1856T05	42	RA9264Y17	87	RB9432Y01	64
R5095084	76	RA1901YAA	71, 96, 133	RA9337WAA	43, 51	RB9529Y01	63
R41053893-12V	64	RA1917Y01	86	RA0036276	114	RB9641WAC	114
R96810019	142	RA2586Y01	42	RA0036331-KIT	124	RB9691X01-RB	110
R96810019-RB	142	RA2634Y01	42	RA0036341	46	RB815713-KIT	122
R96810020	142	RA2660P36	116	RA0041199	46	RC0046XAA	88, 97
R96810020-RB	142	RA2803Y01	63	RA0041217	58	RC0046XAARB	97
R502549002	139	RA2803Y04	62	RA0042009	100	RC0046XAB	97
R900017610	59	RA2932Y01	97	RA0043031	16, 24	RC0046XAC-N	88, 97
R900017615	59	RA3031V02C	46	RA0052012	134	RC0046XACRB	97
R900019801	60, 89	RA3280Y01	67	RA0056019	46	RC80WAA	102
R900020175	60, 89	RA3448Y09	54	RA0056035	105	RC0584Y01	103
R900219602	60, 89	RA3651Y07	71	RA0059012	44	RC0606VAA	21

RC0606VAA-R/H-EX	22	RD0393Y02	65	RG741Y03	77	RL40930-P	114
RC0606VAB-L/H	22	RD0393Y03	65	RG0850YAA	32	RL41228	72
RC0606VAB-L/H-EX	22	RD650Y04	82	RG1622YAA	78	RL41380	47
RC0607VAAEXS	15	RD0650Y07	82	RG1622YAB	78	RL41380 / 17983	64
RC0674Y01	63	RD1009Y01	100	RG1688P16	88	RL41617	80
RC0679Y01	100	RD1009Y02	100	RG2801X01	35	RL42296	129
RC0692X01	28	RD1009Y03	100	RG5509Y01	35	RL410284	80, 100
RC0693X01	28	RD1735Y01	140	RG5869Y01	69, 100	RL410287	78
RC0694XAA	28	RD2882Y01	68	RG6961Y01	46	RL410606	72, 99
RC0694XAA-KIT	29, 134	RD4121Y02	66	RG7721WAA	94	RL410848	23
RC0701Y02-S	28	RD4176Y01	60	RG7733YAA	101	RL410952	82
RC0780VAB	93	RD4313Y02	54	RG7897WAA	102	RL410954	81
RC0839Y01	68, 100	RD4313Y02-11	54	RG7897WAA-C	102	RL411545	29
RC0979WAF	77	RD4346Y01 / R4016317	53	RG8093YAA	78	RL420159	25, 52
RC0993Y01	58	RD4346Y01-HST	53	RH0323Y01	105	RL420309	30
RC0993Y03	56	RD4427XAA	100	RH403Y01	101	RL420984	33
RC0993Y14	56	RD4441WAA	93	RH2247Y01	63	RL421386	62
RC1140Y04	56	RD4664Y02-REX	109	RH2967Y01	76	RL422283	98
RC1695X01	102	RD4676X02	52	RH2967Y02	76	RL422295	129
RC2307VAA	17	RD4741X01	67	RH2967Y03	76	RL422428	81
RC2339Y01	17	RD4827Y01	96	RH4023Y02	101	RL422845	66
RC3759W02	61	RD5288Y01	17	RH5133WAC	84	RL422907	34, 43, 79
RC3812Y03	59, 75	RD5288Y01S	17	RH5133WAE	84	RL422908	34, 79
RC5363WAK	86	RD5869YAA	45	RH5133WAK	86	RL422909	34, 43, 79
RC5696P18	55	RD6020Y01	54	RH5133WAS	83, 114	RL423012	67
RC5696P61	53	RD6244W01	109	RH5133WAT	84	RL423539	110
RC5881Y02	54, 113	RD6328X01	61, 113	RH5463XAA	34, 79	RL423539-R	110
RC6337Y01	112	RD6410WAB	41	RH5568XAA	76	RL423560	110
RC6341WAC	77	RD6931AA-HD	33	RH5614Y01	78	RL423629	68
RC6367WAB	77	RD6931AB-HD	33	RH5932VAA	94	RL423741	72
RC6475XAA	97	RD6987X01	46	RH5963YAA	34, 43, 79	RL424113	69
RC6577PAA	28	RD6987X02	46	RH5991Y01	76	RL424114	69
RC7376Y04	54	RD7190T06	41, 44	RH6204YAA	87	RL424128	110
RC7642YAA	110	RD7597X01	115	RH6285X01	85	RL424334	67
RC7781XAB	65	RD7603Y01	111	RH6339YAB	84	RL424385	66
RC7786XAA	66	RD7603Y02	111	RH6752XAB	79	RL424440	67
RC7788XAA	66	RD8009Y01	26	RH7272WAA	76	RL424468	70
RC8058Y14	53	RD8042Y01	29	RJK-215	16	RL424468-Kit	70
RC8058Y16	60, 89	RD8305Y01	59, 75	RJK-215-KW	16	RL424870	41
RC8106Y01	80, 100	RD8489P01	116	RJK-215-SW	16	RL424936	42
RC8214YAA	62	RD8489P51	58	RJK-193801	42	RL425049	56
RC8649Y01	54	RD8489P64	58, 109	RJK-197940	46	RL425340	69
RC8681X01	97	RD8489P64-9TE1	109	RJK-197940-1	41	RL425341	66
RC8826XASB	93	RD8506Y01	59, 75, 109	RJK-198275	42	RL425565	134
RC8834WAA	101	RD8514Y01	87	RJK-301234	42	RL425984	89
RC9088XAA	57, 133	RD9167Y01	115	RJK-B6090Y02	41	RL4103356	71, 96, 98, 133
RC9095WAH	55	RE-1404809-0-01	18, 88	RL40001	99	RV68336-02EX	15
RC9101VAA	36, 57	RE-2010512-0-02EX	15	RL40008	99	RW68283-03-REX	25
RC9249Y05	55	RE-2100706-0-01-K	27, 126	RL40070	26	RW68348L	105, 140
RC9286Y01	78	RF01796	46	RL40072	26	RW68348R	105, 140
RC9402Y01-KIT	32, 131	RF026061	60, 89	RL40525	26	RW683484LEX	105, 140
RC9678Y12	82	RF040116	81	RL40603	27, 64	RW683484REX	105, 140
RC9785X15	89	RF040119	81	RL40624	58, 86	RW690833-02CW	110
RD0393Y01	65	RG0686XAD	57, 133	RL40805	81	RX68297U	23-24, 51

RX68297U-KIT	119	RZ685917	99
RX683361	52	RZ687106	131
RX685831	102	RZ687107	131
RX710126	30	RZ688521	16, 24
RX754110ACEX	114	RZ688595	34
RX763526-001	102	RZ689173	25
RX763526-003	102	RZ750036	103
RX768469-004	116	RZ750036-KIT	103, 133
RX768469-022	116	RZ750057	103
RX7683628	25, 51	RZ752197	105
RY10047	29	RZ752197-KIT	124
RY54559-001S	112	RZ752201	100
RY56701A	18	RZ752202-0-001	96
RY68375-01	34	RZ752500-041	71, 96, 133
RY104606A	18	RZ754020A	80
RY683439	140	RZ762124-001	96
RY683440	140	RZ765375-001	44
RY683655	141	RZ766673-001	27
RY684121B	80	RZ766844-002	28
RY684448-01	23	RZ767929-002	41
RY684448-01-KIT	119	RZ780309Z	69
RY690486	101	RZZ820EX	86
RY691404-01A	72		
RY710945	67		
RY711173-02A	72		
RY766772Y	27		
RY766898-001	70		
RY767203-001	23, 70		
RY767203-001-KIT	127		
RY767203-001ASY	23		
RZ6206	69		
RZ54903-001	141		
RZ62175	99		
RZ65379-001	46		
RZ68287	25		
RZ68287-KIT	125		
RZ68288-01	25		
RZ68370	33		
RZ68372	33		
RZ68402-02	26		
RZ68439-01	25, 27		
RZ68440-02	16		
RZ68440-02-KIT	123		
RZ68440-02S	25		
RZ68440-02S-KIT	130		
RZ76802-001	126		
RZ682327	33		
RZ682674	27		
RZ683432	141		
RZ683433	141		
RZ683435	141		
RZ683436	141		
RZ683488	141		
RZ683490	42		





REAL SOLUTIONS FOR RAIL MAINTENANCE OF WAY



(217) 268-5110 | sales@rrcri.com

www.rrcri.com