



TAMPER MKI, II, III, IV

2024

**PARTS & ASSEMBLIES  
CATALOG**



**REAL SOLUTIONS FOR  
RAIL MAINTENANCE OF WAY**

(217) 268-5110  
sales@rrcri.com  
www.rrcri.com

# About Us

---

Over 40 years ago, we decided to start a business geared to answering the needs of the rail maintenance-of-way industry. Today we continue to be a family business boasting exceptional customer care, premium quality parts, and unique custom solutions.

At Railroad Component Rebuilds, Inc., we find a way to make parts better. We listen to you, help determine what you need, and get it to you as soon as possible.

We know that time is money in the railway industry. We offer on-the-shelf quality parts that are ready to ship today, including premium components and assemblies for rail tampers, spike puller heads, quality carts, pre-gaugers, and more.

We work with maintenance-of-way machines that need to be rebuilt, repaired, or require new assemblies or parts. And we can re-engineer according to your needs.

Durability, efficiency, and safety are at the center of every RCR assembly, and we strive to be unbeatable at perfecting and delivering MOW parts. So contact us today and let us help you find the perfect answer to your maintenance-of-way needs!



*Eric Headrick, Founder and CEO, and his family*



205 N. Chestnut  
P.O. Box 404  
Arcola, IL 61910  
(217) 268-5110  
sales@rrcri.com  
www.rrcri.com



# TABLE OF CONTENTS

**Mark IV Tamper** .....9

## **Parts for Tamper MKI, II, III, IV**

Workheads .....	13
Workhead Frames .....	19
Combo Clamps .....	37
Hydraulics/Pneumatics .....	49
Electrical .....	73
Surfacing/Lining .....	91
Drivetrain.....	107
Kits.....	117
Miscellaneous .....	137

**Jackson 6700, PD, 3300** .....143

**Spike Puller Assemblies** .....145

**Pre-Gaugers**.....147

**Quality Carts**.....149

**Index**.....151



# TAMPER MKI, II, III, IV



## At RCR, we specialize in rebuilt hydraulic workhead assemblies and parts for MKIV Tamperers.

The Mark IV is a robust, heavy-duty rail tamper that takes on tremendously arduous work on a daily basis. When repair or maintenance is due and you need parts or rebuilt assemblies to keep your MKIV running smoothly and efficiently, we've got your back.

We take your old workhead and replace the ductile iron housing with a steel housing. We rebuild with new, forged steel vibrator shafts that will work harder and last longer. Our customized, heavy-duty workheads will ensure long-term performance, increase safety, and significantly extend your budget.

Our shelves are always stocked with premium parts for your MKIV and are ready to ship the same day.

We also offer parts for the Mark I, Mark II and Mark III Tamperers. Just give us a call!

(217) 268-5110 | [sales@rrcri.com](mailto:sales@rrcri.com) | [www.rrcri.com](http://www.rrcri.com)

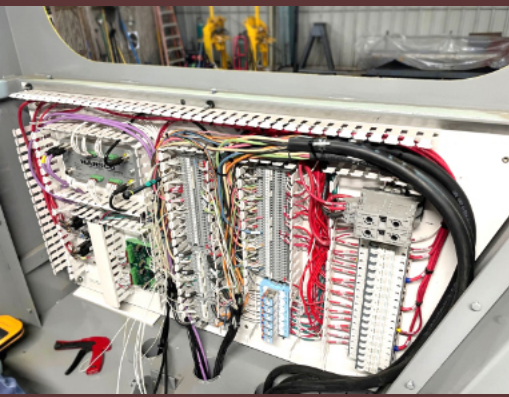




## Needing an assembly rebuild or parts for your Mark IV Tamper?

Look no further. We have everything you need, from vibrators and workhead frames to bushings and bolts!

And we have parts for MKI, II, and III too.



# COMPLETE MACHINE REBUILD MARK IV TAMPER



**HEAVY  
DUTY**



**EXTENDED  
DURABILITY**



**LESS  
MAINTENANCE**



**MADE  
IN USA**



**READY  
TO SHIP**



# MARK IV

## HEAVY DUTY, BETTER-THAN-NEW REBUILD

### SPECIFICATIONS

- Weight: 60,000 lbs.
- Max travel: 30 MPH
- Jupiter II Control System with Surface Fit
- System V Lining System
- Climate-Control Cab
- Combo Clamp System
- Re-Designed Alarm System
- Main Frame: High-Strength Steel, Boxed Beam, Welded Construction
- Wheel & Axles: 28" Single-Wear Solid-Steel Wheels on Heavy-Duty Solid Railroad-Type Axles
- Hydraulic Drive Train: Cushman, 2-Speed Gear Boxes on Each Axle
- High-Pressure Hydraulic Filter Kit
- Suspension: Trunnion-Mounted Front Axle & Rear Axle Elastomeric Suspension
- Engine: Brand New Cummins QSB Tier 4 6.7L, 6-Cylinder Liquid Cooled, Turbocharged & Charge Air Cooled Diesel, 250BHP @ 2200 RPM
- Hydraulic System: New Variable Displacement Piston Pumps, Fixed Displacement Gear Pumps, 24 VDC Solenoid Operated Valves
- Air System: Engine Mounted Air Compressor, up to 28 SCFM, Nominal Operation Pressure 100PSI
- Tamping Units: 4 Heavy-Duty Vibrators Drive 16 Abrasion-Resistant Tamping Tools with Transversion Workheads
- Leveling System: Improved Harsco Rail's Delta System, Single Infrared Projector, Non-Adjustable Shadow Board, Double Barrel Infrared Receivers Mounted on Rapid Response Actuators & Inclinator for Accurate Cross Level
- Electrical: 24-VDC System with 175-A Alternator

**Call for Availability on Our MKIV Tampers.**

## REBUILT & UPGRADED MKIV TAMPERS

Machine stripped to frame, sand-blasted & inspected for cracked welds & other deficiencies. The conversion to hydraulic drive (HD) transmission requires complete replacement of the frames around the transmissions. Replacement structural weldments are furnished by Harsco Rail.

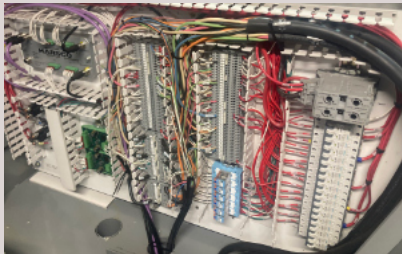
Warranty: One-Year Warranty on all parts through Harsco Rail and Cummins.



**CALL TODAY TO ORDER YOUR NEW MARK IV!**  
**(217) 268-5110**

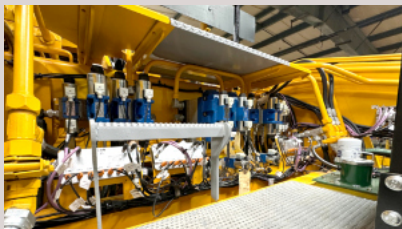
## COMPLETELY NEW JUPITER II CONTROL SYSTEM

The Jupiter Control System is 100% new construction including new factory cables and CAN modules furnished by Harsco Rail.



## FULLY INTEGRATED CAB

Cab has been removed and retrofitted to incorporate current model Mark IV features, such as a new operator station, updated dash, headliner and cab lighting.



## NEW HYDRAULICS

All new hydraulic components (valves and hoses). Genuine Harsco hoses with Harsco's part numbers.

## MKI, II, III, IV WORKHEADS





**MKIV Heavy-Duty Steel  
Hydraulic Vibrator**  
RC0607VAAEXS (Steel)  
R5027624EXS (Steel)

**PREMIUM FORGED STEEL REBUILDS**



**MKI, II, III Electric Vibrator**  
RV68336-02EX  
RE-2010512-0-02EX



**STM Vibrator**  
R0-201052-0-05



**Tamping Tool  
Remover**  
R217512



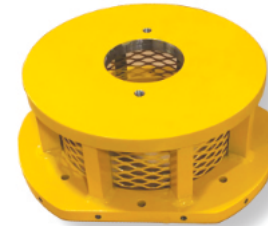
**Tamping Tools (Left and Right)**  
MKI, II, III, IV  
RJK-215L / RJK-215R



**1/4 x 3/8 x 3" Key**  
MKI, II, III, IV  
RJK-215-KW



**Shield**  
MKI, II, III, IV  
R0-1303686-0-01



**MKIV Hydraulic Motor Bracket /  
Adapter Weldment MKIV**  
RC2307VAA



**MKIV Hydraulic Vibrator  
Motor Rex Roth**  
R4012702



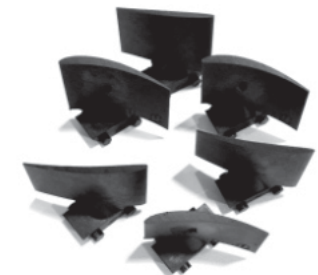
**Square Washer**  
MKI, II, III, IV  
RJK-215-SW



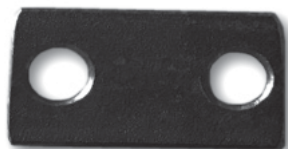
**Vibrator Connecting Pin 1 x 3 5/8"**  
MKI, II, III, IV  
RZ68440-02



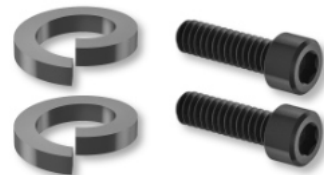
**MKIV Fan Coupler with Fan**  
RD5288Y01S



**MKIV Hydraulic Vibrator Fan Blades**  
RC2339Y01



**Plate Lock**  
MKI, II, III, IV  
RZ688521



**1/4" Socket Head with Lock Washer**  
MKI, II, III, IV  
RA0043031



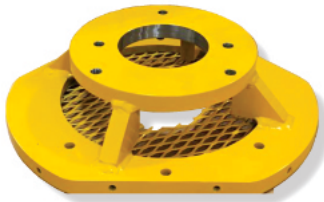
**Shroud**  
MKI, II, III, IV  
R0-1303949-0-01



**MKIV Fan Coupling  
Assembly without Fan**  
RD5288Y01

**Need a workhead rebuild?**

Our heavy-duty steel housing greatly improves the performance and extends the life of your tamper's workheads. And our new, forged vibrator shafts are all made in the USA. Call us today!



**STM Motor Bracket**  
R216059-2



**Fan for Electric Vibrator**  
MKI, II, III  
RY104606A



**Coupler with Fan for STM**  
R0-3017-0-01



**Stator Rewound and Notched**  
(Exchange with Rebuildable Core)  
for Electric Workhead MKI, II, III  
RE-1404809-0-01



**STM Hydraulic Motor**  
R0-3321014-0-02



**Fan Cover MKI, II, III**  
RY56701A



**Vibrator Housing Bronze Bushing**  
RB7487Y01



**Vibrator Housing Steel Bushing**  
RB487Y01S

# MKI, II, III, IV WORKHEAD FRAMES





**Rebuilt Heavy-Duty MKIV Workhead  
Frame Assembly Left**  
R5055209\_B

Complete with All New (Heavy-Duty Workhead Support (New Style), Heavy-Duty Support Arms, Rear Slider, Heavy-Duty Frame, Guide Rods and Squeeze Cylinders) and a Rebuilt Carrier. Transducer or String Pot (NOT INCLUDED). (Exchange)



**Rebuilt Heavy-Duty MKIV Workhead  
Frame Assembly Right**  
R5054725\_B

Complete with All New (Heavy-Duty Workhead Support (New Style), Heavy-Duty Support Arms, Rear Slider, Heavy-Duty Frame, Guide Rods and Squeeze Cylinders) and a Rebuilt Carrier. Transducer or String Pot (NOT INCLUDED). (Exchange)



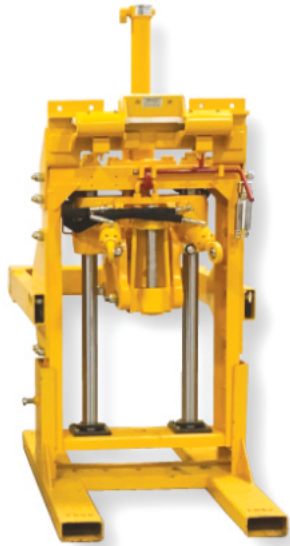
**MKIV Workhead Frame Assembly  
Complete - Right**  
RC0606VAA-R/H  
RC0606VAA-R/H-EX (Exchange)

Excludes Transducer and String Pot.  
Please specify when ordering.



**Universal Workhead Frame  
Fits Left or Right/ String Pot or Transducer**

Left Complete Frame - R5055209  
Right Complete Frame - R5054725  
Bare HD Universal Frame - R5021173



**MKIV Workhead Frame Assembly Complete - Left**  
RC0606VAB-L/H  
RC0606VAB-L/H-EX (Exchange)

Excludes Transducer and String Pot.  
Please specify when ordering.



**Rebuilt Heavy-Duty / HST Workhead Frame Assembly Right/Left**  
RC0606VAA-R/H-EX  
RC0606VAB-L/H-EX

Complete with All New (Heavy-Duty Support Arms, Rear Slider, Heavy-Duty Frame, Guide Rods) and a Rebuilt Carrier. MKIV, Squeeze Cylinder, Limit Switch, Excludes Transducers/String Pot. (Exchange)



**Support Arm New Style MKIV (Left) Heavy-Duty**  
R4028347



**Heavy-Duty Workhead Frame with Limit Switch Panels or String Pot**  
RA5287VAAL (Left)  
RA5287VAAR (Right)  
HD Transducer -  
RA5287VAA-HD (Right)  
RA5287VAB-HD (Left)



**Support Arm New Style MKIV (Right) Heavy-Duty**  
R4028349



**Heavy-Duty Support Arm MKIII**  
R0-2303363-0-03LHD (Left)  
R0-2303363-0-04RHD (Right)



**New Heavy-Duty Squeeze Cylinder**  
MKI, II, III, IV  
RX68297U

1-piece forged rod, both ends machined to retain bearings with 1 snap ring retainer end and clevis end



**Lift Cylinder MKIV**  
RB5761XAA



**Lock Handle Spring**  
RL410848



**Lock Handle Lever**  
R0-1302117-0-01



**Swivel Bracket**  
MKI, II, III, IV  
RY684448-01



**Hook (Workhead Lock)**  
MKI, II, III, IV  
R0-1405505-0-01



**Floating Vertical Pin with Grease Holes Top and Bottom**  
R4-2300189-0-01S



**Floating Horizontal Pin with Nut & Washer** MKI, II, III, IV  
R4-2400264-0-01

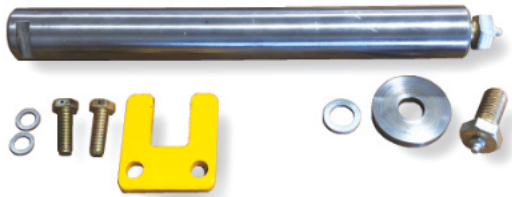


**Workhead Air Lock Cylinder**  
RY767203-001



**Workhead Air Lock Cylinder Assembly**  
RY767203-001ASY

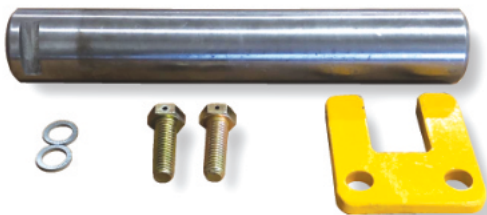
Includes Air Lock Cylinder and Clevis with 2 pins.



**Pivot Pin Kit for Vertical Pin  
R5007907-KIT**

Item	RCR Part #	Part Description	Qty
A	R5007783	Pivot Pin	1
B	RH3948Y05	Disc Lock Washer	2
C	R5007905	1/2-13 UNC X 1-1/2" Hex Head Bolt	2
D	R5007872	Multi Rotation Keeper	1
E	RH3948Y04	Disc Lock Washer	1
F	R5007873	Pivot Pin Washer	1
G	R5007906	3/4 x 10 UNC 1-1/2" Hex Head Bolt	1

All parts can be sold separately.



**Pivot Pin Kit for Horizontal Pin  
R5007782-KIT**

Item	RCR Part #	Part Description	Qty
A	R5007782	Pivot Pin	1
B	RH3948Y05	Disc Lock Washer	2
C	R5007905	1/2-13 UNC x 1-1/2" Hex Head Bolt	2
D	R5007872	Multi Rotation Keeper	1

All parts can be sold separately.

**New Heavy-Duty Squeeze Cylinder  
MKI, II, III, IV  
RX68297U**

1-piece forged rod, both ends machined to retain bearings with 1 snap ring retainer end and clevis end



**We can customize a kit for you**

If your team needs a tailored maintenance kit, just let us know. We will work with you to put together the best kit to suit your needs!



**1/4" Socket Head with Lock Washer  
RA0043031**



**Plate Lock  
MKI, II, III, IV  
RZ688521**



**Vertical Pin Lock Plate  
R3059110**



**Vibrator Connecting Pin 1 x 3 5/8"  
MKI, II, III, IV  
RZ68440-02S**



**Carrier Connecting Pin 1 x 4 1/8"  
MKI, II, III, IV  
RZ68439-01**



**Workhead Carrier with Stop Bolts & Carrier Bronze MKIV  
(Rebuildable Exchange with MKIV Style Carrier)  
Please specify right or left.  
R0-2100706-0-01**



**Bearing COM16 Squeeze Cylinder  
MKI, II, III, IV  
RL420159**



**Concrete Steel Tie Squeeze Cylinders  
RX7683628**



**MKI and MKII Carrier Rebuilt Exchange  
RW68283-03-REX**



**Cushing Pad  
MKI, II  
RZ689173**



**Bronze Bushing (Carrier) with Wiper Seal & O-Ring  
MKI, II, III, IV  
RZ68287**



**Vibrator Carrier Distance Bushing  
MKI, II, III, IV  
RZ68288-01**



**Wiper Ring (Carrier)**  
MKI, II, III, IV  
RL40525



**O-Ring (Carrier)**  
MKI, II, III, IV  
RL40070



**Snap Ring  
for Carrier Bushing**  
RL40072



**MKIII, IV Vibrator Carrier Kit**  
RE-2100706-0-01-K

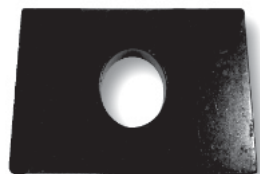
RCR Part #	Part Description	Qty
RE-2100706-0-01LEX or RE-2100706-0-01REX	Rebuilt Vibrator Carrier MKIII, IV with Stop Bolts and Carrier Bronze L/H or R/H - Exchange (please specify right or left)	1
R0-1404016-0-01	Guide Rod 2 1/2 OD x 41 3/8" Long MKIII, IV	2
RY68375-01	Lower Cushion Pad MKI, II, III, IV	2
R0-1404015-0-01	Lower Adjusting Plate MKIII, IV	2
RZ68439-01	Carrier Connecting Pin 1 x 4 1/8" MKI, II, III, IV	4
RZ682674	Squeeze Cylinder Spacer (Small) MKIII, IV	8
RL420984	Guide Rod Bolt 1 1/4-12 x 3" MKI, II, III, IV	4
RA0061021	1 1/4 Heavy Lock Washer	4



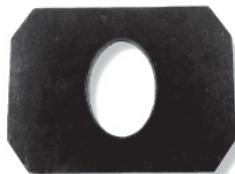
**Stop Bolt with Bumper**  
MKI, II, III, IV  
RZ68402-02



**Carrier Bumper Bolt**  
MKI, II, III, IV  
RD8009Y01



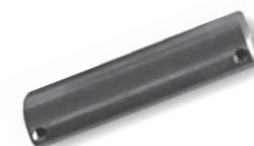
**Upper Cushion Mount**  
MKII, III, IV  
R0-1404045-1-01



**Lower Cushion Mount**  
MKII, III, IV  
R0-1404574-1-01



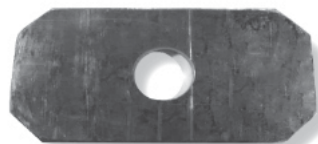
**Squeeze Cylinder Spacer  
(Small) MKIII, IV**  
RZ682674



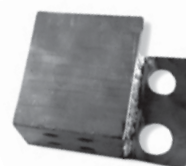
**Carrier Connecting Pin 1 x 4 1/8"**  
MKI, II, III, IV  
RZ68439-01



**Retaining Plate C**  
MKI, II, III, IV  
R0-1404046-1-01



**Lower Retaining Plate**  
MKI, II, III, IV  
R0-1404575-1-01



**Squeeze Cylinder Manifold**  
MKI, II, III, IV  
RY766772Y



**Shock Mount Rubber**  
RZ766673-001



**Oilers**  
RL40603



**Workhead Rear Slider Assembly Complete**  
RC6577PAA



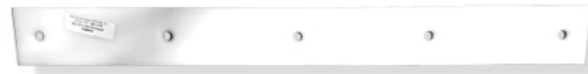
**Shim Plate (C Type Rear Slider) MKIV Slotted**  
RC0701Y02-S



**Shim Plate (Rear Slider) MKIII**  
RZ766844-002



**Shim Support Block**  
RC0693X01



**Rear Slide Wear Pad Support MKIII, IV**  
RC0692X01

**Support Block Assembly Rear Slider 2 per Side MKIII, MKIV**  
RC0694XAA



**Top Slider Pad Replacement Kit**  
R0-1304828-0-1S-KIT

RCR Part #	Part Description	Qty
R0-1304828-0-01S / RG0852YAA	Slide Pad - No Notch with Threaded Inserts MKI, II, III, IV	2
R0-1304826-0-01S	Stop Pad with Threaded Inserts (New Style) MKI, II, III, IV	2
RF00114	5/16" Drilled Bolt	12



**Lock Pawl MKI, II, III, IV Complete**  
R0-1305837-0-01



**Traverse Sprocket**  
R0-3625033-0-01 / RD8042Y01



**Idler Sprocket for Traverse**  
RY10047



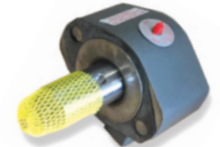
**Idler Axle Pin for Traverse & Nut**  
RA4881Y01



**Workhead Traverse Idler**  
RA4877XAA



**Workhead Traverse Motor**  
RL411545



**Workhead Traverse Load Adapter**  
R0-3624021-0-01



**Rear Slider Kit for 1 Frame**  
RC0694XAA-KIT

RCR Part #	Part Description	Qty
RZ750978	1/2" Drilled Bolts	10
RA0061023	Heavy Duty 1/2" Lock Washer	10
RA0042024	Screw Allen FLT HD 1/2-13 x 1-1/4	5
RC0693X01	Shim Support Block	4
RC0694XAA	Support Block Assembly Rear Slider - 2 per Side MKIII, MKIV	2



**Top Plate for Traverse Assembly**  
MKI, II, III, IV  
R0-1305836-0-01



**Bottom Plate for Traverse Assembly**  
MKI, II, III, IV  
R0-1305840-0-01



**Clevis Pin for Traverse Assembly**  
MKI, II, III, IV  
R0-3015002-0-28



**Single 60-1 Traverse Chain**  
10ft Sections with Master Link  
R0-1302082-0-01 / RA1294Y01



**Guide Bar for Traverse Assembly**  
R0-1305835-0-01



**Shim for Top Plate**  
**for Traverse Assembly**  
R0-1305839-0-01



**Mounting Plate**  
R0-1305832-0-01



**Traverse Link Plate (Bend)**  
R0-1202627-0-01



**Traverse Link Plate**  
R0-1202626-0-01



**Connecting Link**  
**for a Traverse Chain**  
RL420309



**Chain Tension MKI, II**  
RX710126



**New Style Top Slider**  
**Heavy-Duty Complete MKIV**  
**(Left or Right)**  
**Universal**  
R5047427



**Traverse Lock Hydraulic Cylinder**  
MKI, II, III, IV  
R0-3372001-0-01

**Don't see something you're looking for?**

Give us a call! We are constantly expanding our inventory and offering more parts and assemblies. We'll make sure you find what you need.





**Top Workhead Support Left MKIV  
(Complete)**  
RA1176VAAL-C

**Top Workhead Support Right MKIV  
(Complete)**  
RA1176VAAR-C



**Slide Pad Notched  
MKIII, MKIV**  
R0-1304827-0-01



**Slide Pad - No Notch  
with Threaded Inserts  
MKI, II, III, IV**  
R0-1304828-0-01S

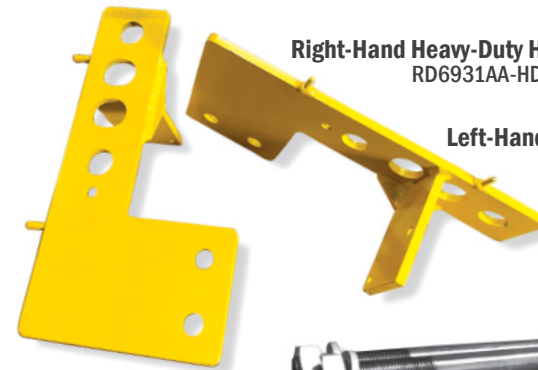


**Stop Pad with Threaded Inserts  
(New Style) MKI, II, III, IV**  
R0-1304826-0-01S /  
RG0850YAA



**Lock for Top Slider**  
RC9402Y01-KIT

Comes with RA0060018,  
R0-3015001-0-35, RC9402Y01,  
RL41005, RZ710103,  
R0-3015001-13



**Right-Hand Heavy-Duty Hose Bracket**  
RD6931AA-HD

**Left-Hand Heavy-Duty Hose Bracket**  
RD6931AB-HD



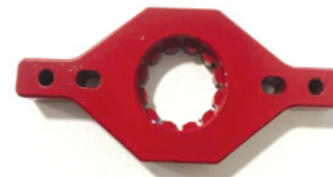
**Lift Rod MKI, II**  
RZ682327



**Guide Rod 2 1/3 OD x 39 3/4" Long MKI, II**  
RZ68372



**Guide Rod 2 1/2 OD x 41 3/8" Long MKIII, IV**  
R0-1404016-0-01

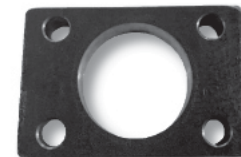


**12-Point Guide Rod Bolt Retainer  
for Workhead Frame**  
MKI, II, III, IV  
R5110-268

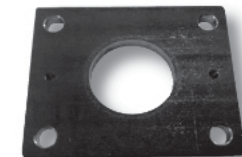


**1 1/4 Guide  
Rod Bolt**  
RL420984

**1 1/4 Heavy Lock Washer**  
RA0061021



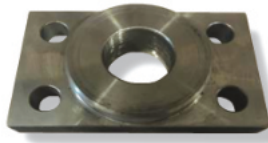
**Workhead Adjusting Plate - Upper**  
MKI, II, III, IV  
RZ68370



**Workhead Adjusting Plate - Lower**  
MKIII, IV  
R0-1404015-0-01



**Lower Cushion Pad**  
MKI, II, III, IV  
RY68375-01



**Top Plate**  
RZ688595



**Heavy-Duty Limit Switch**  
without Arm MKIII, IV  
RL422907



**String Replacement for**  
**String Pot MKIV**  
RG5509Y01



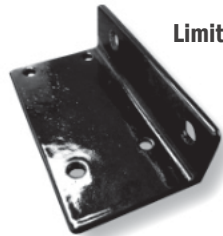
**String Wheel for**  
**String Pot MKIV**  
R201428



**Limit Switch Arm - Short**  
MKI, II, III, IV  
RL422908



**Limit Switch Arm - Long**  
MKI, II, III, IV  
RL422909



**Limit Switch Bracket**  
MKIV  
RA7105Y01



**Limit Switch Jupiter MKIV**  
with M12 Connector  
RH5963YAA



**String Pot Mounting Bracket**  
MKIV  
RG2801X01



**Linear Transducer Magnet**  
R2006043



**Workhead Proximity**  
**Switch MKIV**  
RH5463XAA



**Proximity Switch**  
**Bracket MKIV**  
RB2455X01



**Linear Transducer for MKIV**  
**HD and Drones**  
R2006042

Magnet and Bracket sold separately.



**String Pot 30" .024 String**  
**(Non-Jupiter) MKIV**  
R0-3137013-0-13



**String Pot 30" .024 String**  
**(Jupiter) MKIV**  
R0-3137013-0-14



**Weldment for Carrier**  
R5021207



**Transducer Mount**  
**Magnet MKIV**  
R5021216

# MKI, II, III, IV COMBO CLAMPS

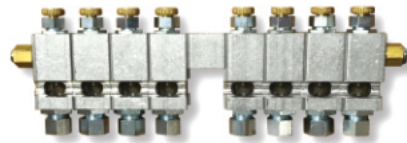


**Workhead Lift Complete Assembly with Manifold  
RC9101VAA**

RCR Part #	Part Description	Qty
R0-3333037-0-09	D05 Valve Assembly Squeeze Cylinder for MKIV / Direction Hook Valve for MKIV, Clamp Valve	2
R0-3333037-0-19	Right/Left Hand Hook Workhead Lift Valve MKIV	4
R21-0283	Manifold	1
	Long Bolts	20



**Flow Regulator Valve  
R0-3335012-0-01**



**Automatic Oiler  
RB1657Y08**



**MKIV Hose Bracket 1 x 2 x 10 AL HS  
R0-1101329-0-01S**



**MKIV Hose Bracket  
1 x 2 x 4 1/2 AL HS  
R0-1101325-0-09**



**Chain Guard  
Right Side - RA1441X01  
Left Side - RA1441X01**





**PREMIUM REBUILT COMBO CLAMPS**



**VME - Non-Jupiter**

**RA7608VAKEX**

Rebuilt Combo Clamp Assembly with Carbide Wear Surfaces  
(Exchange) MKIV

**Jupiter**

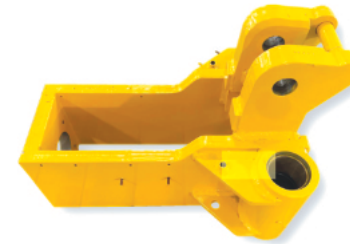
**RA7608VAAEX**

Rebuilt Combo Clamp Assembly with Carbide Wear Surfaces  
(Exchange) MKIV



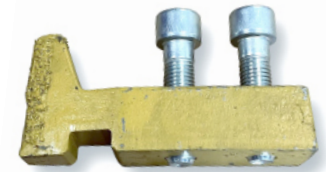
## Complete Combo Clamp Rebuild Kit (Excludes Guide Rods) R105110

RCR Part #	Part Description	Qty
RL40705	Spherical Bearing for Bias, Liner, Jack Cylinder	4
RA1072Y01	Plastic Washer	2
RL424936	Spacers	12
R0-3013001-0-05	Snap Rings	4
RA4823Y01	Hook Extend Cylinder Pins	2
R0-3095002-0-11	Slew Cylinder Pin	4
RA6030Y02	Steel Bushing Combo Clamp 1.5" ID	2
R0-3019004-0-13	Spacer	6
R0-3019004-0-01	Insulating Disc	2
RL40931	Nut - Pin Roller, Small	2
RZ765375-001	Insulating Washer (Combo Clamp 1" ID) MKIII, MKIV	6
RZ767929-002	Insulating Spacers	2
RA1681YAA	Roller Assembly (Combo Frame Small) MKIII, MKIV	2
R0-2305761-0-01	Large Wheel Roller Combo	2
R0-3011001-0-78	Large Nut Pin Roller	2
RD6987X02	Pin Roller Large	2
R0-1203075-0-01	Insulating Plate	1
R424870	Snap Rings	4
R0-3652060-0-01	Hook Bushing	4
RA1856T04	Bushing	2
R0-1305728-0-01	Brass Carrier Box Combo Clamp 3"	8
RD6987X01	Pin Roller Combo Frame Small	2
RA1856T03	Bushing	4
RA0036341	Stop Bolt Combo MKIII	4
R0-3095004-0-01	Jack Cylinder Pin - Upper 1.5" OD MKIII, IV	2
RA6030Y04	Bushing Steel Combo Clamp	2
RA1856T05	Bushing	12
R0-3393001-0-05	Wiper Seal 3"	8
R0-3393001-0-06	Wiper Seal Large 4.5"	4
R0-1305774-0-01	Bias Cylinder Pivot Pin	1
R0-2305775-0-01	Pivot Pin Bias	1
R0-3015002-0-26	Liner Cylinder Pin	2
R0-3095002-0-09	Bias Pin MKIII, MKIV	1
R0-3093401-0-01	Jack Eye Pin Lower	2
RA6030Y05	Spacers	8
RA0056019	Jam Nut	4
RD7190T06	Washer/Spacer for Liner Cylinder	10
RA0060021	1" Flat Washer	20
RA0059012	1 1/2" Flat Washer	10
R0-3019004-0-08	2" Flat Washer	2
RZ683490	Washer	12
RA0059008	3/4" Flat Washer	12



**Carrier Box**  
(Exchange Only with a Rebuildable Core)  
RD6410WAB

Please specify left or right side.



**Low Profile Rail Clamp**  
RJK-B6090Y02



**Mark Rail Clamp Single Hook**  
RJK-197940-1



**Combo Clamp Cover (Hook)**  
MKIII, IV  
RA8288X01



**Insulating Bushing**  
(Combo Clamp Carrier Box  
1.5" Inside Diameter) MKIII, IV  
RA1856T04



**Steel Bushing**  
(Combo Clamp Carrier Box  
1.5" Inside Diameter)  
MKIII, IV  
RA6030Y02



**Insulated Spacer**  
1.5" Inside Diameter  
MKIII, IV  
RZ767929-002



**Washer-Spacer**  
Used in Liner Cylinder  
and Hook Box  
RD7190T06



**Insulating Disc MKIII, IV**  
R0-3019004-0-01



**Spacer (Combo Clamp)**  
MKIII, IV  
R0-3019004-0-13



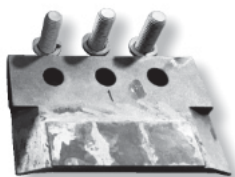
**Retaining Ring MKIII, IV**  
RL424870



**1.5" OD Steel Washer**  
RA6030Y05



**Bias Pad**  
RJK-198275



**Bias Pad Replacement Kit**  
RJK-301234



**Bias Cylinder MKIII, IV (Combo Clamp)**  
RB5705XAB



**Limit Switch Jupiter MKIV with M12 Connector**  
RH5963YAA



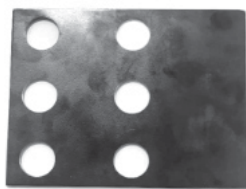
**Limit Switch Bracket**  
RA6733Y02



**Limit Switch Arm - Long**  
MKI, II, III, IV  
RL422909



**Reaction Pads MKIII & IV**  
RJK-193801



**Shim for Reaction Pad MKIII, IV**  
RA2586Y01



**Pivot Pin Combo Clamp Bias 1.5" OD**  
MKIII, IV  
R0-2305775-0-01

**Heavy-Duty Limit Switch without Arm MKIII, IV**  
RL422907



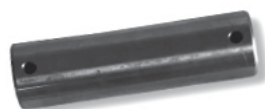
**MKIV Guide Retainer (Combo Clamp)**  
RA6229X01



**Wiper Seat - Large 4.5" MKIII, IV**  
R0-3393001-0-06



**Wiper Seat - Small 3" MKIII, IV**  
R0-3393001-0-05



**Bias Cylinder Pivot Pin**  
R0-1305774-0-01



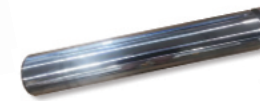
**Bias Pin MKIII, IV**  
R0-3095002-0-9



**2" Flat Washer**  
R0-3019004-0-08



**Slew Cylinder Pin 1" Outside Diameter MKIII, IV Hook Cylinder Pin**  
R0-3095002-0-11



**Guide Rod 4 1/2" (Combo Clamp)**  
RA6233X01



**Guide Rod 3" (Combo Clamp)**  
R02203041-0-01



**Spacer**  
RL424936



**Insulating Washer MKIII, IV 3/4" Inside Diameter**  
RZ683490



**Insulating Bushing Main Beam MKIII, IV**  
RA1856T05



**MKIV Slew Cylinder RB7036WAC**  
**MKIII Slew Cylinder RA9337WAA / RB7036WAA**



**Rod Weldment - Slew Cylinder Combo Clamp with Bearing**  
R0-2202634-0-01



**Insulating Plate**  
RA-1203075-0-01



**Tapped Plate**  
RA2634Y01



**MKIV Slew Cylinder End Cap with Springs Assembly Kit**  
R0-2202634-0-011



**MKIV Slew Cylinder End Cap with Springs**  
R0-2202634-0-11

RCR Part #	Part Description	Qty
R0-1304838-0-01	End Caps	1
RZ763793B	Rod Weldment	1
R0-3641000-0-19	Slew Cylinder Spring	2
R0-1304837-0-02	Bushing Retainer Plate	1



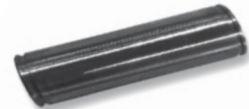
**Slew Cylinder Spring**  
R0-3641000-0-19



**Guide Rod Bushing (Combo 3") MKIII, IV**  
R0-1305728-0-01



**Clevis Pin - Combo Clamp (Liner Cylinder) MKIII, IV**  
R0-3015002-0-26



**Pin - Combo Clamp 1" OD MKIII, IV, Hook Extend Pin**  
RA4823Y01



**Roller Mount for Combo Clamp - Small**  
RA5553W01



**6" Jack Cylinder with Lock and Air Cylinder, Round Eye**  
RB5715XAE



**6" Jack Cylinder without Hook**  
RB5715XAD



**6" Jack Cylinder with Lock and Hook**  
RB5715XAB



**6" Jack Cylinder with Hook MKIV**  
RB5715XAA



**Liner Cylinder MKIII, MKIV**  
RB5705XAF



**Jack Clamp Frame Air Release Cylinder for MKIV**  
**Air Lock Cylinder Pin for MKIII & MKIV**  
RA4771Y04 - Air Cylinder only  
R0-3014001-0-12 - Clevis only



**Hook Weldment Lock for Jack Cylinder**  
RD5869YAA



**Hook Extend Cylinder MKIII, IV**  
RB5708XAA



**Plastic Washer (Combo Clamp 1" ID) MKIII, IV**  
RA1072Y01

**Snap Ring for Hook Extend Cylinder Pin**  
R0-3013001-0-05



**Insulating Washer (Combo Clamp 1" ID) MKIII, IV**  
RZ765375-001



**Washer-Spacer Used in Liner Cylinder and Hook Box**  
RD7190T06



**1" Flat Washer**  
RA0060021 /  
R0-3019004-0-12



**1 1/2" Flat Washer**  
RA0059012



## Need help finding something?

Just because you don't see what you need in this catalog doesn't mean we can't help you get it. We are constantly adding parts and assemblies to our stocked inventory, and we pride ourselves in helping you find just what you need. Give us a call!



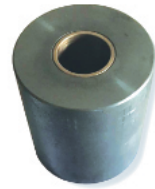
**Pin Roller  
(Combo Frame  
Small) MKIII, IV**  
RD6987X01



**Roller Assembly  
(Combo Frame  
Small) MKIII, IV**  
RA1681YAA



**Pin Roller  
(Combo Frame  
Large) MKIII, IV**  
RD6987X02 /  
R0-1305757-0-01



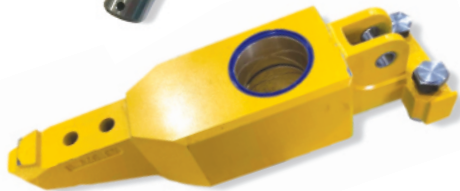
**Roller Assembly  
(Combo Frame  
Large) MKIII, IV**  
R0-2305761-0-01



**Jack Cylinder Pin -  
Upper 1.5\"/>**



**Jack Cylinder Pin -  
Lower 1.5\"/>**



**Combo Clamp Hook Complete  
with Bushing & Seals**  
RA3031V02C



**Hook Bushing / Guide Rod Brass  
(Large 4.5\"/>**



**Stop Bolt (Combo)  
MKIII, IV**  
RA0036341 / RG6961Y01



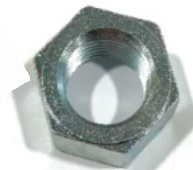
**Insulating Bushing  
(Combo Clamp - Hook)  
MKIII, IV**  
RA1856T03 / RZ65379-001



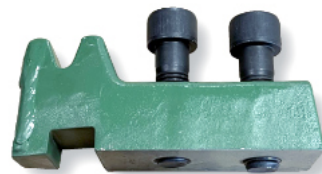
**Bushing Steel  
(Combo Clamp - Hook)  
MKIII, IV**  
RA6030Y04



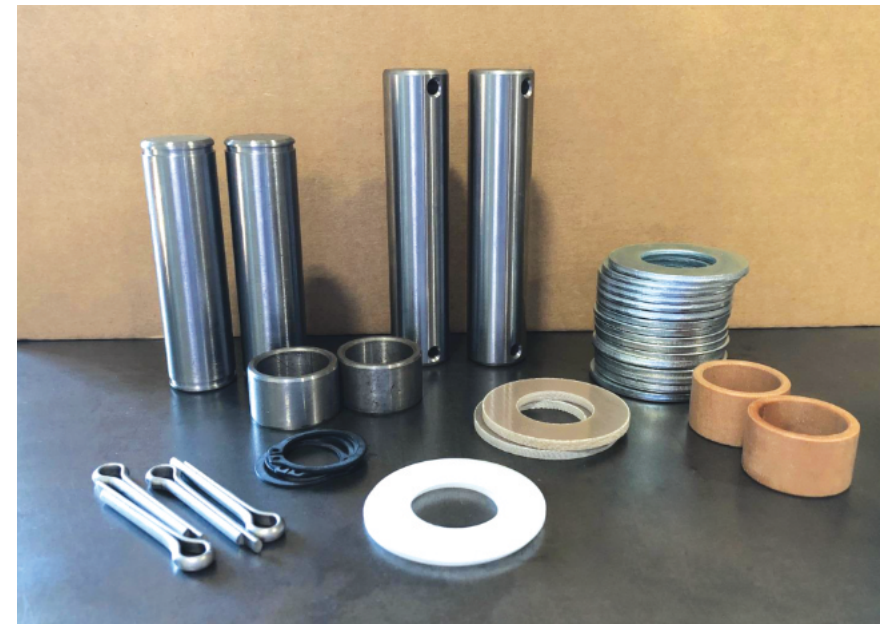
**Socket Head Bolts  
for Combo Clamp**  
RA0041199



**Jam Nuts**  
RA0056019 / RF01796



**MKIV Rail Clamp**  
RJK-197940

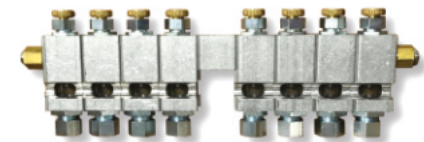


**Hook Extend Cylinder Pin Kit**  
R2685110-KIT

RCR Part #	Part Description	Qty
R0-3095002-0-11	Pin - Slew Cylinder 1" Outside Diameter MKIII, IV	2
RA4823Y01	Hook Extend Pin	2
RA1856T03	Bushing - Insulating (Combo Clamp - Hook) MKIII, IV	2
RA6030Y04	Bushing Steel (Combo Clamp - Hook) MKIII, IV	2
RA1072Y01	Plastic Washer (Combo Clamp 1" ID) MKIII, IV	2
RZ765375-001	Insulating Washer (Combo Clamp 1" ID) MKIII, IV	2
R0-3013001-0-05	Snap Ring for Hook Extend Cylinder Pin	4
RA0060021	1" Flat Washer	16
RA006830	1/4 x 1 1/2 Cotter Pin	4



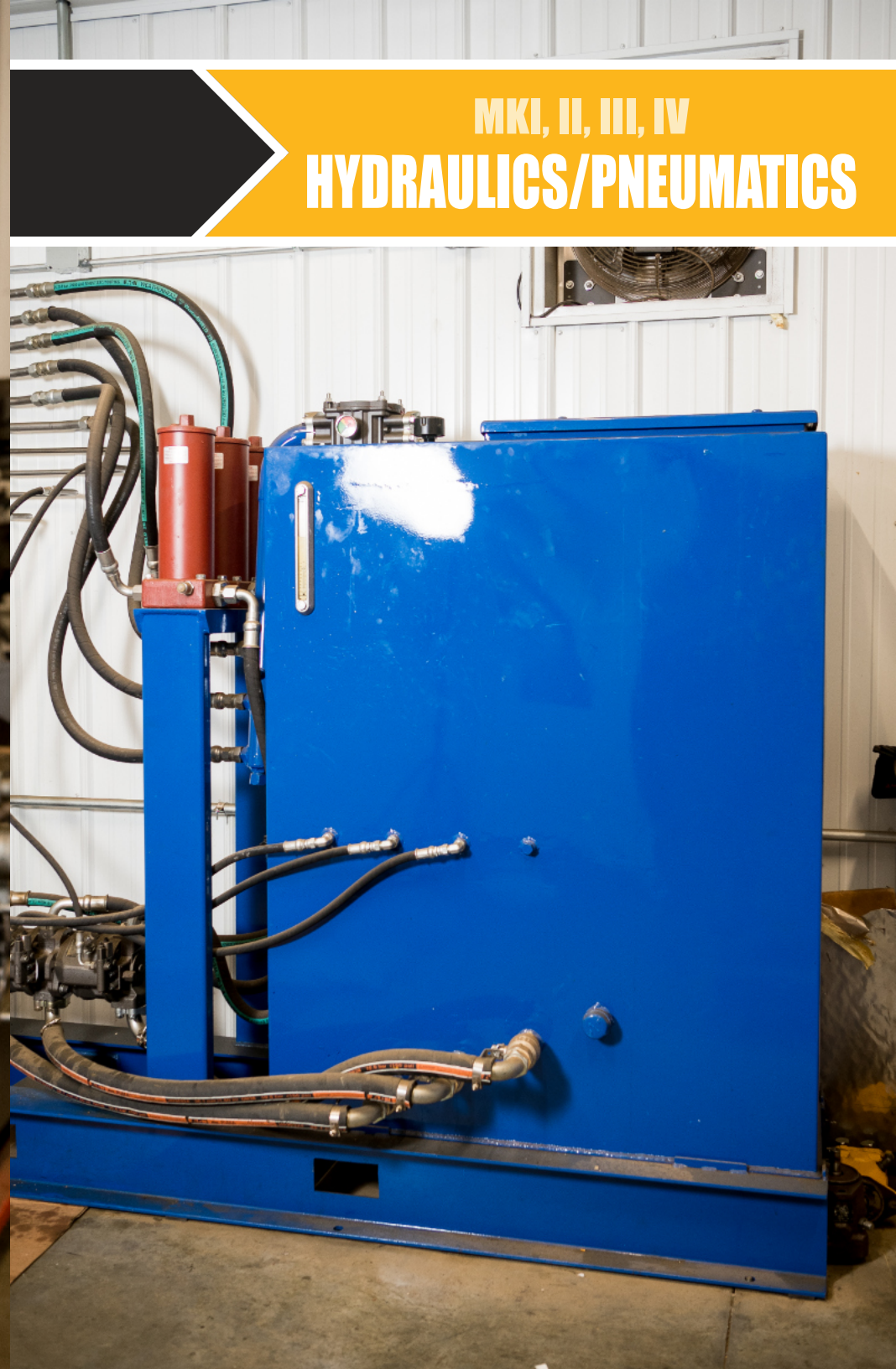
**Clamp Pressure Switch - SD**  
RL41380 / R17983



**Automatic Oiler**  
RB1657Y08



MKI, II, III, IV  
**HYDRAULICS/PNEUMATICS**





**New Heavy-Duty Squeeze Cylinder**  
MKI, II, III, IV  
RX68297U

1-piece forged rod, both ends  
machined to retain bearings with  
1 snap ring retainer end and clevis end



**Lift Cylinder MKIV**  
RB5761XAA



**Concrete Steel  
Tie Squeeze Cylinders**  
RX7683628



**MKIV Slew Cylinder**  
RB7036WAC

**MKIII Slew Cylinder**  
RA9337WAA/  
RB7036WAA



**6" Jack Cylinder without Hook**  
RB5715XAD



**6" Jack Cylinder with Lock  
and Air Cylinder, Round Eye**  
RB5715XAE



**6" Jack Cylinder with Lock and Hook**  
RB5715XAB



**6" Jack Cylinder with Hook MKIV**  
RB5715XAA



**Hook Extend Cylinder**  
MKIII, IV  
RB5708XAA



**Liner Cylinder**  
MKIII, IV  
RB5705XAF



**Bias Cylinder MKIII, IV  
(Combo Clamp)**  
RB5705XAB



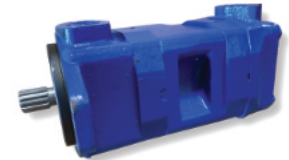
**Bearing COM16  
Squeeze Cylinder**  
MKI, II, III, IV  
RL420159



**Unitized Piston  
with Seal**  
RD4676X02



**Hydraulic Double Gear Pump**  
MKIV P3/P4  
RA0713Y11 / 4029715



**Vickers Vibrator Pump**  
R620-081465



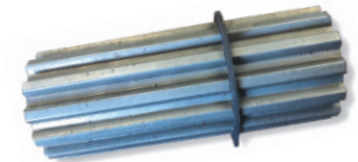
**Rail Clamp Cylinder**  
RX683361



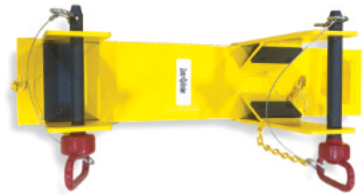
**Traverse Lock Hydraulic Cylinder**  
MKI, II, III, IV  
R0-3372001-0-01



**P1/P2 Piggy Back  
Spline Coupling**  
R902436104



**Durst Gear Box  
Spline Adapter**  
RC5696P61



**Liner Cylinder Bracket  
for MKIV Tamper**  
R2460860-LINER



**6" Jack Cylinder Bracket**  
R2460860-JACK



**Rex Roth P1/P2  
Pump for HST**  
RD4346Y01-HST



**Rex Roth Pump  
Compensator MKIV**  
RC8058Y14



**Hook Extend Cylinder  
Bracket for MKIV Tamper**  
R2460860-HOOK



**Lift Cylinder  
Bracket Holder for MKIV**  
R2460860-LIFT



**P1/P2 Casappa  
Pump MKIV**  
R5038083



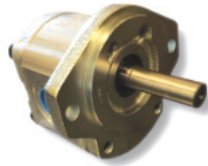
**Rex Roth P1/P2  
Pump MKIV**  
RD4346Y01 / R4016317



**Slew Cylinder  
Bracket for MKIV Tamper**  
R2460860-SLEW



**MKIV Hydraulic Vibrator Motor Rex Roth**  
R4012702



**Oil Cooler Fan Motor**  
RC7376Y04

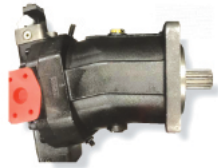
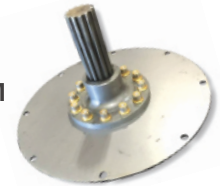


**Coupler for Oil Fan Cooler Motor**  
R5025804

**Durst Flex Plate for Funk Gearbox**  
R5074799



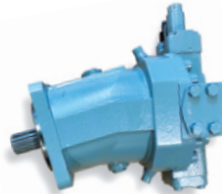
**MKIV Flex Drive Plate Assembly (also fits STM and Terrel Gearbox)**  
RC5696P18



**Projector Rear Variable Displacement Drive Motor MKIV (Exchange Only)**  
RC5881Y02



**Front Fixed Displacement Drive Motor MKIV (Rebuilt) Exchange**  
RC8649Y01



**Variable Displacement Motor for HD and Drone**  
R4029264



**In Tank Return Filter Assembly for MKIV and HST**  
RC9249Y05



**Hydraulic High-Pressure Filter**  
RB5548Y08



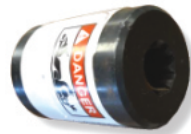
**Hydraulic High-Pressure Filter**  
RB5548Y09



**Dennison Rear Travel Motor MKIII**  
RA4124Y01D



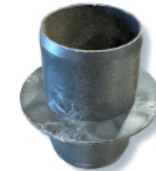
**Clark Transmission Charge Motor MKIV**  
RD6020Y01 / R4024664



**Charge Pump & Motor Coupler**  
RA0728Y18



**KZ 10 Filter**  
R0-3354005-0-09



**Coupler for KZ Filter**  
R0-3354005-0-04



**MKIV Charge Pump for a Clark Transmission**  
RA3448Y09



**MKIII Traction Motor**  
R0-3317006-0-08



**Gear Motor Pump, 9 Spline**  
R350204-1-09



**Liner Float Valve MKIII**  
R0-3333037-0-08



**D05 Valve Assembly Squeeze Cylinder for MKIV / Direction Hook Valve for MKIV, Clamp Valve**  
R0-3333037-0-09



**Gear Pump Kit**  
R4024650



**MKI, II Vickers Hydraulic Vibrator Motor**  
R0-3321014-0-02



**MKIV P7 Pump, Clockwise Rotation, 11 Spline Double or 9 Spline**  
RD4313Y02  
RD4313Y02-11



**Rear Traction Valve Assembly Complete**  
RC9095WAH



**Flow Control Valve, Sandwich, D05**  
R0-3335018-0-02



**Workhead Relief Valve for MKIV, MKVI, HD, Drone**  
R4029520



**Right/Left Hand Slew Valve  
Right/Left Hand Squeeze Valve  
Workhead Traverse Assembly**  
RC0993Y03



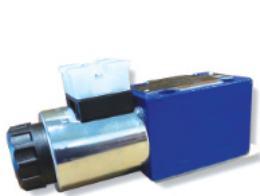
**Bias Valve MKIV**  
R0-3333037-0-10



**Pivot Lockout Valve Assembly**  
RC9088XAA



**MKIV P7 Relief Valve**  
R0-3334011-0-06



**(D03) HYD Valve  
3 POS 4-Way**  
RC0993Y14

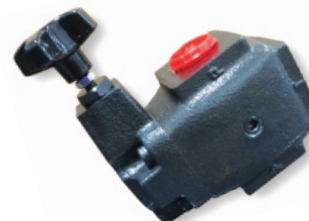


**Auto Jack Regen Valve -  
Whole Valve**  
RA4490Y07

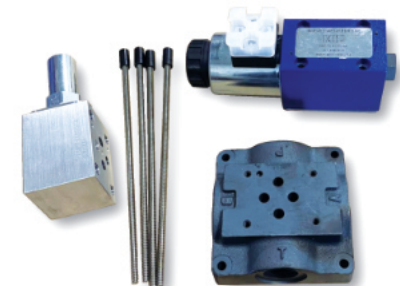


**MKIV Vibrator Vent Valve**  
RC1140Y04

Please note: This does not come assembled for easy installation.



**Relief Valve**  
R0-3334011-0-03



**Oil Cooler Fan Motor Valve Assembly**  
RG0686XAD



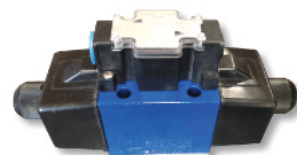
**Right/Left Hand Hook  
Regen Valve MKIV**  
R0-3333037-0-18



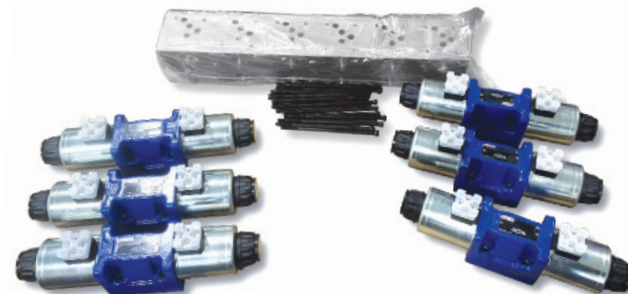
**Right/Left Hand Hook  
Workhead Lift Valve MKIV**  
R0-3333037-0-19



**Right/Left Hand  
Slew Valve MKIII**  
R0-3333010-0-08



**Right/Left Hand  
Standard Squeeze Valve MKIII**  
RL425049



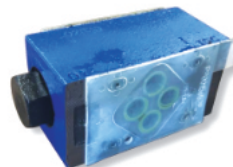
**Workhead Lift Complete Assembly with Manifold**  
RC9101VAA



**MKII Vent Valve /  
MKII Pivot Front Lockout**  
RA1215Y07



**Bias Valve  
Right/Left Hand Workhead MKIII,  
Right/Left Hand Hook Extended,  
Right/Left Hand Jack**  
R0-3333039-0-05

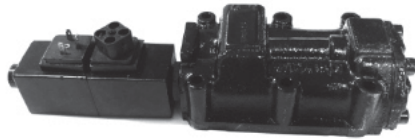


**PO Check D03  
Sandwich Valve**  
R0-3336024-0-07

RCR Part #	Part Description	Qty
R0-3333037-0-09	D05 Valve Assembly Squeeze Cylinder for MKIV / Direction Hook Valve for MKIV, Clamp Valve	2
R0-3333037-0-19	Right/Left Hand Hook Workhead Lift Valve MKIV	4
R21-0283	Manifold	1
	Long Bolts	20



**Traction Valve Manifold Assembly  
(Front and Rear) Whole Valve  
RA4490Y03**



**Electric Control Valve Assembly  
for Clark Transmission Exchange Only  
RD8489P64**



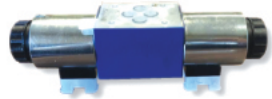
**Rex Roth Hydraulic  
Viton Seal for D03  
R900017610**



**Rex Roth Hydraulic  
Viton Seal for D05  
R900017615**



**Boss O-Ring Kit  
for MKIV Tamper  
RA4839Y01**



**Pump Control  
Valve Assembly  
RC0993Y01**



**D05 Valve Assembly Squeeze Cylinder  
for MKIV / Direction Hook Valve for  
MKIV, Clamp Valve  
R0-3333037-0-09**



**Drone Travel  
Coil D05  
R5004639**



**24 Volt Coil  
for Drone  
R4020299**



**D05 Coils  
24 Volt DC  
RC3812Y03**



**D03 Coils  
24 Volt DC  
RB4068Y15**



**Front Wheel Drive  
Motor Valve Assembly MKIII  
R0-3333039-0-04**



**1/4 - 20 x 5 1/4" Long  
Socket Head Bolt  
RA0041217**



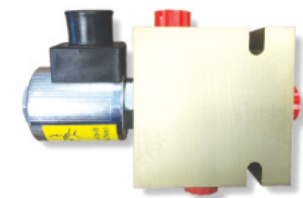
**O-Ring  
RD8489P51**



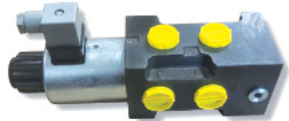
**Decel Valve Older MKIV  
2 each Machine, On/Off  
Switch for Air Conditioner  
RA0729Y06**



**Decel Valve  
RD8305Y01**



**Warm-Up Valve MKIV  
RA0730Y04**



**Warm-Up Valve  
R5007825**



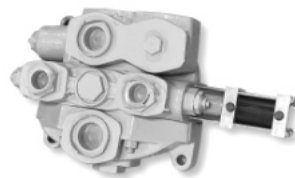
**D03 Solenoid 24 Volt  
Coil Vickers  
R0-3339041-0-13**



**Squeeze Pressure Switch  
RL40624**



**Pressure Reducing for Pivot Axle Valve  
R0-3334026-0-04**



**Travel Valve  
R0-3333056-0-11**



**Clark Transmission Coil  
RD8506Y01**



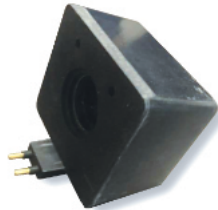
**Rex Roth  
Replacement Coil  
R5004649**



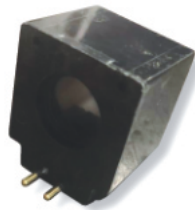
**TR10 Work Travel  
Valve Coil  
R02-304251**



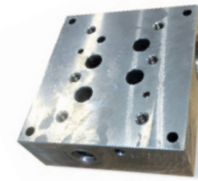
**Coil for MKIII**  
R0-3339031-0-01



**Rex Roth Coil**  
R900219602



**Coil**  
R0-3339031-0-08RX



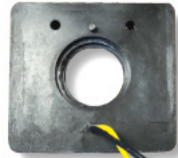
**Rear Traction Subplate**  
RD6328X01



**Front Subplate D08**  
R0-3361004-0-05



**ESTR Vent Valve MKIII**  
R900020175



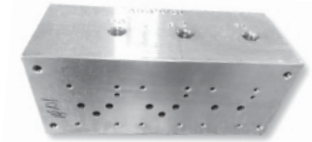
**D05 Conduit 110 Volt for MKIII**  
R900019801



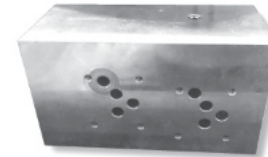
**Coil for Travel for Variable Speed Motor**  
RC8058Y16 / R902602670



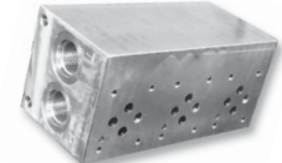
**Auto Jack Manifold**  
R0-3366046-0-01



**Vent Manifold**  
RA5354V01



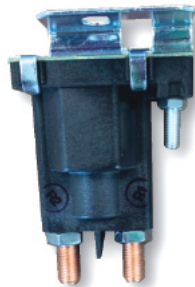
**Liner Cylinder Manifold**  
RA1458V01



**Workhead Traverse Manifold**  
R0-3364012-0-02



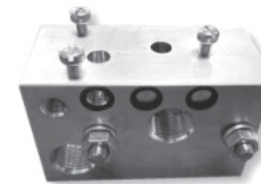
**MKIV Suction Strainer with Magnets and Quick Shut Off**  
RD4176Y01



**Power Relay 24V DC**  
R172164 / CR1330



**Coil**  
RF026061



**Regulator Manifold**  
R0-3401000-0-09



**D05 Sandwich Manifold for Liner & Clamp Cylinder Valve Assembly**  
RC3759W02

**We will get you what you need.**

We pride ourselves in doing our very best to find what you need. So just let us know, even if you don't see it in this catalog!



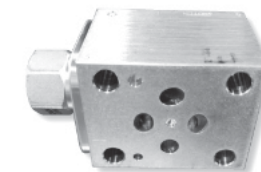
**Exhaust Vent**  
R0-3350004-0-06



**MKIV Emergency Pump 24 Volt HST and MKIV Tamper**  
R0-3316003-0-04



**Hydraulic Valve Assembly**  
R0-3336024-0-06



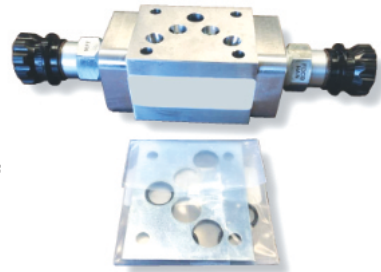
**Pivot Lockout Sandwich Valve**  
R0-33336024-0-06



**Manifold Regulator MKIV, STM**  
R0-3401000-0-13



**MKIV D03 Work Relief Sandwich Valve**  
RA1070Y29



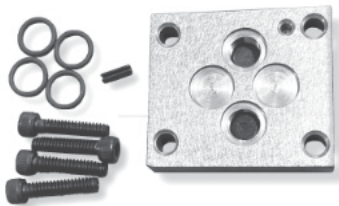
**Workhead Dual Flow Control Sandwich**  
R0-3335024-0-12



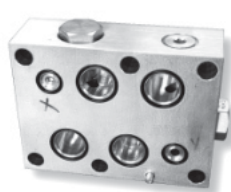
**MKIV D05 Single Flow Control Sandwich Valve**  
R0-3335024-0-11



**MKIV Traverse Shuttle Sandwich Valve**  
RC0674Y01



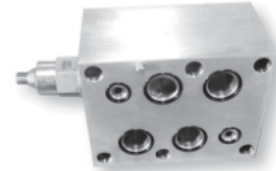
**Manifold Accessories (Block with Hardware and O-Rings)**  
R0-3360011-0-06



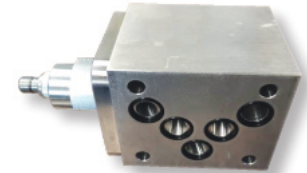
**MKIV Traction Check Sandwich Valve**  
RA2803Y04 / RC8214YAA



**Custom Manifold Assembly**  
R0-3334057-0-07



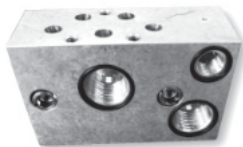
**MKIV Auto Jack Regen Flow Control Sandwich**  
RB9529Y01



**MKIV D05 Bias Pressure-Reducing Sandwich Valve, Pivot Frame Lockout Pressure-Reducing Sandwich**  
R0-3334013-0-05



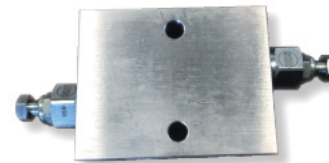
**MKIV Workhead Dual Check-Valve Sandwich**  
R0-3336002-0-01



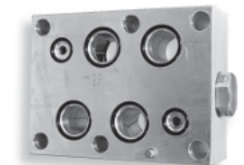
**Manifold Exipilot**  
R0-3401000-0-06



**MKIV D05 Dual Relief Sandwich**  
RA1070Y19



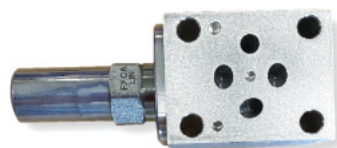
**Lockout Float Cross Port Relief Valve**  
RA4057Y01



**Workhead Check-Valve Sandwich - D08 (2 Assemblies on MKIII)**  
RA2803Y01



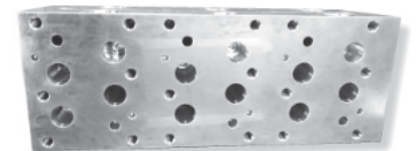
**Selector Valve MKI, II, III**  
RL421386



**Flow Control Sandwich D03**  
R0-3335031-0-15

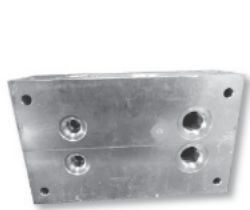


**Dual Flow Reg Assembly (D05) for Bias and Clamp Valve & Liner Clamp**  
RH2247Y01



**3-Valve Manifold, ECTR Hook Manifold Steel**  
R0-3364040-0-01





**MKIII Left or Right Hand Workhead Manifold**  
R0-3364033-1-01



**Clamp Pressure Switch - SD**  
RL41380 / R17983



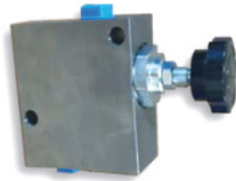
**Decel Filter with Housing**  
RA5748Y01



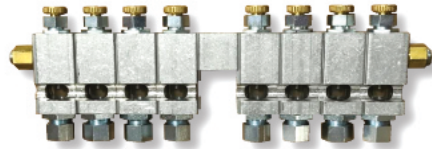
**MKIV Single Coil Air Valve**  
RD0393Y02



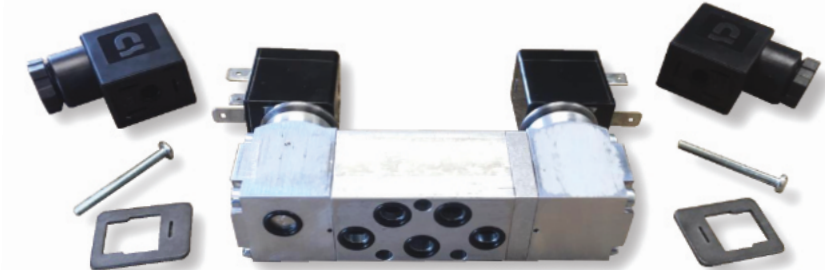
**Air Valve Assembly**  
RC7781XAB



**Flow Regulator Valve**  
R0-3335012-0-01



**Automatic Oiler**  
RB1657Y08



**Double Solenoid Air Valve MKIV for Bias Valve**  
RD0393Y01



**Oilers**  
RL40603



**MKIV Hose Bracket 1 x 2 x 10 AL HS**  
R0-1101329-0-01S



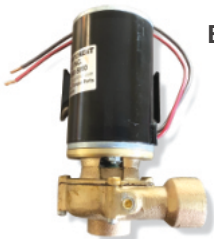
**MKIV Hose Bracket 1 x 2 x 4 1/2 AL HS**  
R0-1101325-0-09



**Clamp Assembly**  
R5013800



**Transfer Pump 12 Volt**  
R41053893-12V



**Booster Pump for MKIV**  
RB9432Y01



**Air Pressure Sender**  
RA0151Y28



**Single Solenoid Air Valve (Piloted) MKIV for Workhead Release Valve and Index Brake Valve**  
RD0393Y03

**We can customize a kit for you**

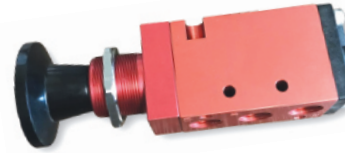
If your team needs a tailored maintenance kit, just let us know. We will work with you to put together the best kit to suit your needs!



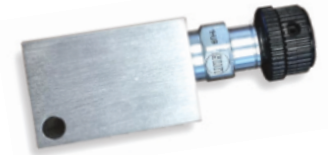
**Miniature Pressure with Gauge**  
RL422845



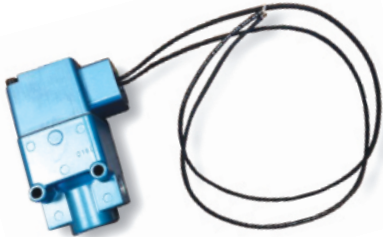
**MKIV Jupiter Horn**  
RD4121Y02



**MKIV Shadow Board  
Air Lift Valve**  
RD4741X01



**Traverse Lock Cylinder  
Relief Valve**  
R0-3334049-0-01

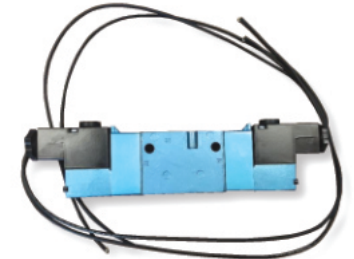


**Emergency Brake Valve MKIV  
Hard Wired**  
R0-3413003-0-15

**Emergency Brake Valve  
MKIV DIN Connect**  
R5006344



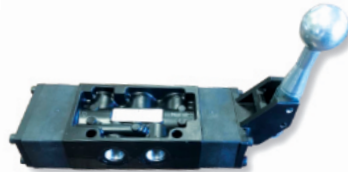
**Airline Filter**  
R0-3432000-0-02



**MKII Air Travel Valve**  
RL424440



**Air Switch Valve**  
RL425341



**MKI Air Control Handle Valve**  
RL424385



**Handle (Valve Bank) MKI**  
RY710945



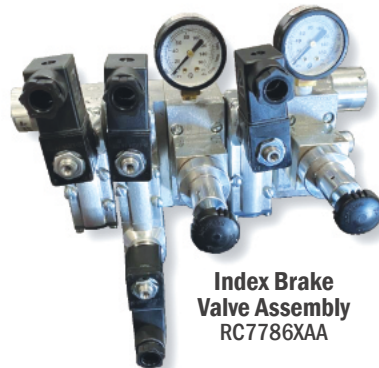
**Stacking Regulator**  
R0-3413005-0-18



**Air Tank Drain Valve**  
RA3280Y01



**Shadow Board  
Valve Assembly**  
RC7788XAA



**Index Brake  
Valve Assembly**  
RC7786XAA



**Chain Link MKI Valve Bank**  
RL423012



**Pressure Protection Valve**  
RA6519Y01



**Safety Relay Valve / Quick  
Release Holding Valve**  
RL424334



**MKIV Throttle Control Valve**  
RD2882Y01

**MKIII, IV Throttle Control**  
R0-3470022-0-02



**Valve, Brake, Spring Return**  
- Goes to Armrest  
R4008071



**Hand Brake Valve MKIII 1/2**  
RL423629



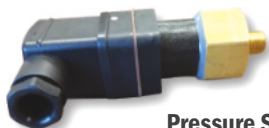
**Spring Return Brake Valve**  
R4008253



**Spring Brake Relay**  
RA5045Y02



**MKIV Shadow Board Lift Cylinders**  
RC0839Y01



**Pressure Switch MKIV Clark Transmission**  
RA7081Y13

**Air Relay Valve**  
RA5045Y01



**MKIV Air Horn Older Style**  
RZ780309Z



**Socket Head DIN Connect Adapters**  
R100570



**Air Switch MKI, 3-Position Toggle MKI**  
RZ6206

**Pilot Operated Air Valve**  
R0-3413001-0-04



**Air Valve (Push Button)**  
RL424113

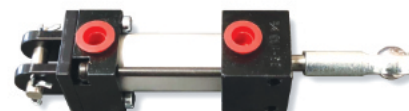


**Pilot Valve MKI, II, III, IV**  
RL425340



**Valve Air Toggle Switch (MKI, II, III)**  
RL424114

**Air Shift Kit MKIII**  
R0-3470025-0-01



**Kershaw Plow Lock Cylinder**  
R191243



**MKIV Air Bias Cylinder for Receiver and Shadow Board**  
RG5869Y01

Complete with Air Fitting and Rod Ends  
Part # R0-2303635-0-06

**Needing a cylinder or valve you don't see?**

Just give us a call at  
(217) 268-5110 and we'll help  
you find what you need!



**MKIII Combo Lock Air Cylinder**  
RL424468



**Projector Buggy Bias Air Cylinder**  
R0-3470019-0-06



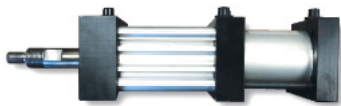
**Jack Clamp Frame  
Air Release Cylinder for MKIV  
Air Lock Cylinder Pin for MKIII & MKIV**  
Without Clevis - RA4771Y04  
Clevis - R0-3014001-0-12



**Workhead Air Cylinder  
Lock Harsco Stabilizer**  
R5045881



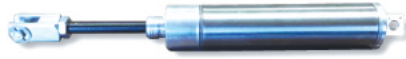
**Double Action Air Cylinder**  
R0-3470023-0-06



**Air Cylinder Double**  
R5059188



**Air Cylinder Assembly  
for the Receiver and Shadow Buggy**  
R0-2303635-0-06



**MKIII Combo Lock Air Cylinder Kit**  
RL424468-KIT



**MKI Air Cylinder Valve Bank or  
MKIII Pin Cylinder for Shadow Board**  
RY766898-001



**Workhead Air Lock Cylinder  
MKIII, IV**  
RY767203-001



**Drone Workhead Lock Air Cylinder  
Rear Transmission Air Cylinder**  
R0-3470014-0-01



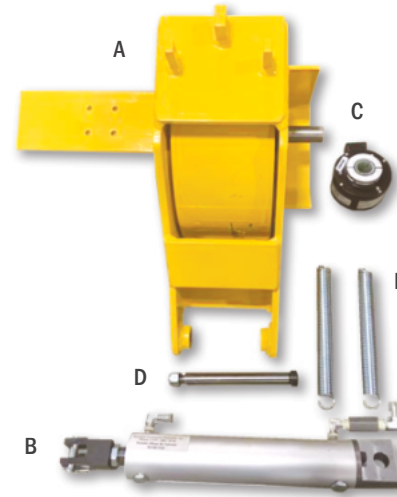
**Double Action Air Cylinder MKIV**  
R0-3470019-0-14



**Double Air Cylinder Kit  
Replaces the R2013625**  
R5060044



**MKIV Funk Transmission /  
Rear Transmission Shift Air  
Cylinder Kit with Rod Ends**  
R0-3470014-0-01-KIT



**(A) Encoder Wheel Assembly - Complete**  
R69427WA6

**(B) Encoder Wheel Air Cylinder**  
RA1901YAA

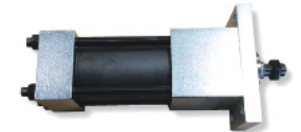
**(C) Encoder**  
R5004402

**(D) Shoulder Bolt for Encoder**  
RZ752500-041

**(E) Spring for Bias Buggy on Projector Buggy**  
RL4103356



**MKIV Encoder Air Cylinder**  
R0-34710007-0-01



**MKIV Sliding Axle Lock Cylinder**  
R0-3371069-0-01



**Spring Extension Air Cylinder**  
R0-3470019-0-18



**Air Cylinder for Shadow Board Assembly MKIII**  
R0-2303635-0-02



**TR10 Brake Index Valve**  
R0-3412004-0-02



**Pressure Transducer MKIV**  
0 to 10,000 PSI  
R4008374



**Two-Speed  
Air Shift Cylinders**  
RA3651Y07



**Two-Speed Air Shift  
Cylinder Kit - Two-Speed Funk**  
RA3651Y07-KIT

# MKI, II, III, IV ELECTRICAL



**Standard Subplate  
for D08 Valves**  
R0-3361004-0-01



**Pin for Shadow Board Air Cylinder**  
R0-1406298-0-01



**Master Switch  
for Battery on MKIV**  
R0-3180004-0-04



**Barksdale Pressure Switch**  
R96201



**Plug, Quick Coupling**  
RL41228



**Filter Muffler**  
RL423741



**MKIV Slew Cylinder End Cap  
with Springs Assembly Kit**  
R0-2202634-0-011



**Traction Valve Handle  
MKI, II**  
RY711173-02A



**MKIII, IV Coupling for Air Shift**  
R0-1407202-0-01

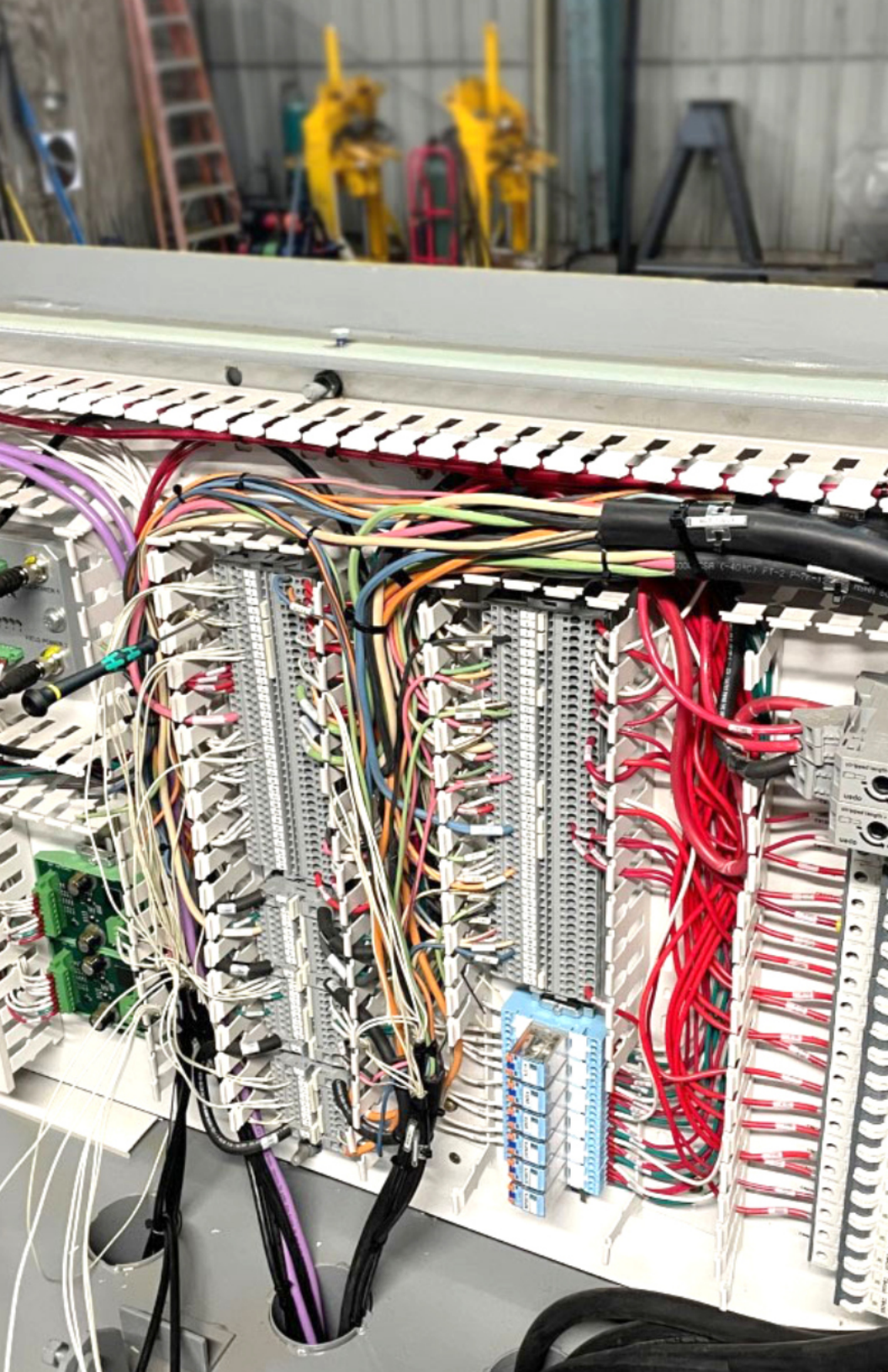


**Hook Assembly for Turntable**  
MKI, II, III, IV  
RY691404-01A



**MKIII MKIV  
Front Buggy Lift Valve**  
RL410606





**Drone Travel Coil D05**  
R5004639



**24 Volt Coil for Drone**  
R4020299



**D05 Coils 24 Volt DC**  
RC3812Y03



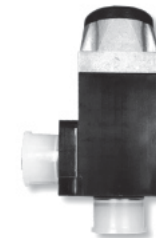
**D03 Coils 24 Volt DC**  
RB4068Y15



**Warm-Up Valve MKIV**  
RA0730Y04



**Decel Valve Older MKIV**  
2 each Machine, On/Off  
Switch for Air Conditioner  
RA0729Y06



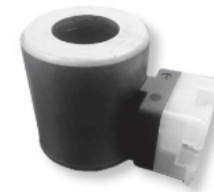
**D03 Solenoid 24 Volt  
Coil Vickers**  
R0-3339041-0-13



**Decel Valve**  
RD8305Y01



**Clark Transmission Coil**  
RD8506Y01



**Rex Roth  
Replacement Coil**  
R5004649



**TR10 Work Travel  
Valve Coil**  
R02-304251



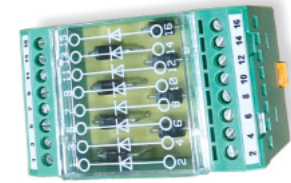
**New Digital CANS for Jupiter System**  
R4019452



**Analog CAN for Jupiter System**  
R4019453



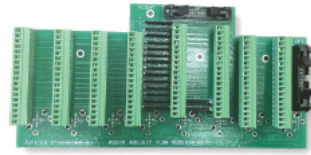
**DC / DC Converter**  
**+/- 12 Dual Output**  
R2005990



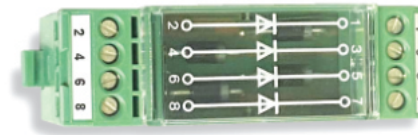
**Diode Block**  
RB0970Y20 / R2949389



**Jupiter 2 HD 32 Module CAN 6**  
R4028741



**Jupiter II Scanner Board Assembly**  
R4022817



**Diode**  
RB0970Y18



**Left Hand Switch Pad Assembly**  
RB0941WAB



**Jupiter Analog Input CAN**  
RH2967Y02 / R5090720



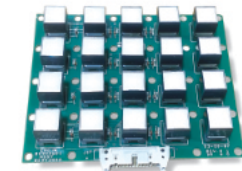
**Jupiter 1 Digital Input CAN**  
RH2967Y01 / R5090719



**New Style Analog Input Module**  
RH2967Y03 / R5090721



**Right Hand Keypad VME**  
**(Exchange Only)**  
RC6341WAC



**Control Keyboard**  
**(Exchange Only)**  
RB0943WAA



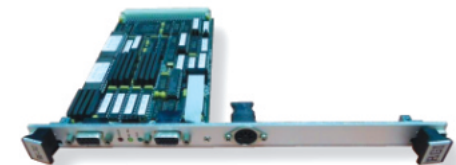
**MKIII 1/2 Jam Box**  
RH5991Y01



**Safety Interrupt Module**  
RH5568XAA



**Left Hand Keypad VME**  
RC6367WAB



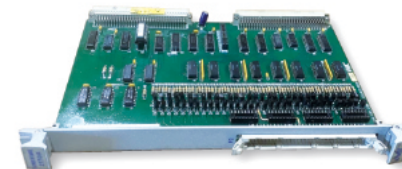
**RG 741 VME Graphic Board**  
**(Exchange Only)**  
RG741Y03



**Jam Box for MKIV, Drone, 6700, and MKVI G6**  
**(need customer's machine number)**  
R5095084 / R5015210



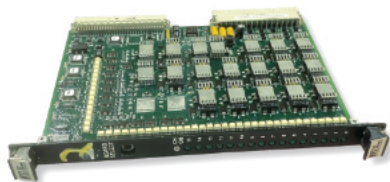
**DC 2 AC 24 Volt Power Converter**  
RA1787Y24 / RH7272WAA



**VME 2170 Card**  
**(Exchange Only)**  
RB0841XAA



**CPU Card for VME MKIV**  
**(Exchange Only)**  
RC0979WAF



**Fairmont Tamper 16-Channel Output Card (Exchange Only)**  
RG1622YAA



**MKIV VME 311A Card (Exchange Only)**  
RG8093YAA

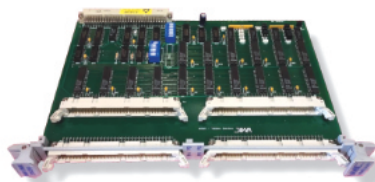


**J42 Card for Jupiter 2**  
R4022695

**Workhead Proximity Switch MKIV**  
RH5463XAA



**VME REL Output Card Assembly (Exchange Only)**  
RG1622YAB



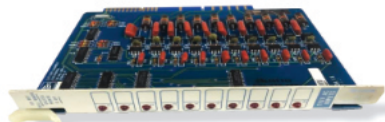
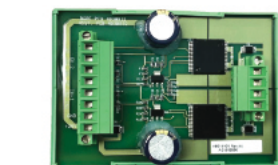
**MKIV Output Card VMIVME-2528 (Exchange Only)**  
RB0839XAAEX

**Linear Transducer for MKIV HD and Drones**  
R2006042



Magnet and Bracket sold separately.

**MKIII VME Power Supply (115 VAC) Exchange**  
R0-2305351-0-01EX



**Input Board Exchange MKIII**  
R0-2305347-0-01



**Limit Switch Arm - Long**  
MKI, II, III, IV  
RL422909



**Limit Switch Arm - Short**  
MKI, II, III, IV  
RL422908



**Limit Switch Jupiter MKIV with M12 Connector**  
RH5963YAA



**Heavy-Duty Limit Switch without Arm**  
MKIII, IV  
RL422907

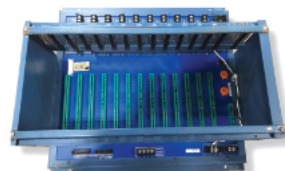


**Limit Switch**  
R0-3119003-0-02

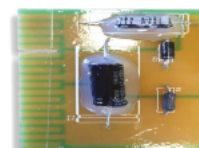
**H-Bridge Driver**  
RH5614Y01



**Output Board Exchange MKIII**  
R0-2305350-0-01



**MKIII Chassis Rebuilt/Exchange**  
R0-3150017-0-01



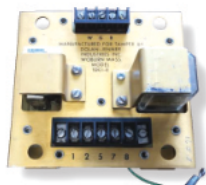
**Projector Lamp Volt Control Board MKIV**  
R0-2306408-0-01



**Continuous Speed Projector Motor MKIV**  
R0-2302202-0-01



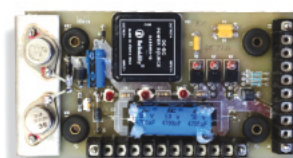
**Double Barrel Adapter Assembly (Exchange)**  
RH6752XAB



**Receiver Amplifier for MKI, II, III**  
RL410287



**MKIV Power Supply 24 Volt (Exchange Only)**  
RC9286Y01



**A2 Board (Exchange Only)**  
R171463-1



**Projector Lamp Volt Control Board Holder**  
R0-3237004-0-01



**Continuous Speed Projector Motor Holder**  
R0-3237004-0-02





**New Double Barrel Receiver**  
R4007012

**Double Barrel Exchange Only**  
(Must have Rebuildable Core)  
R4007012EX



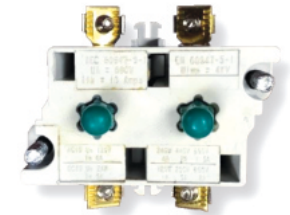
**Bullet Projector Assembly MKIV**  
R5033556



**Contact Block NC for MKIV Joystick**  
RB1348Y03



**Contact Block NC**  
RL410954



**Contact Block NO-NO**  
RL40805

**Windshield Wiper Blade MKIV**  
R0-3502003-0-08



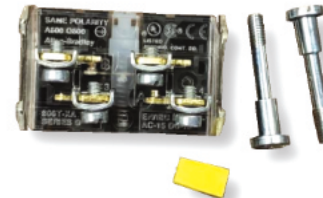
**Windshield Wiper Arm MKIV**  
R0-3502050-0-01



**Projector Bulb**  
MKI, II, III, IV  
RB9263Y01



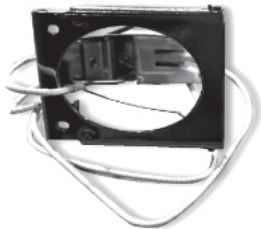
**LED Cab Light**  
for MKIV Tamper  
R5008006



**Contact Block NO-NC for MKIV Joystick**  
RB1348Y02



**MKIV Master Switch On/Off (Push/Pull)**  
RF040119



**Bulb Holder**  
MKI, II, III, IV  
RC8106Y01



**Photocell Reflector Assembly for Surface**  
MKI, II, III, IV Lead Sulfide  
RL410284



**Power Cable**  
for Front Buggy  
R5036079



**Contact Block NC**  
RF040116



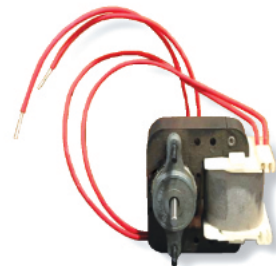
**Push/Pull On/Off Switch for MKI, II & II**  
RL422428



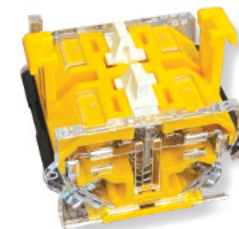
**Projector Chopper Motor Blade**  
RY684121B



**Chopper Disc Assembly for Double Barrels**  
RZ754020A



**Projector Chopper Motor**  
MKI, II, III, IV  
RL41617



**Contact Block NO/NO**  
RA0653Y01



**On/Off Toggle Switch**  
R33407-01



**Joystick Assembly Kit  
with Contact Blocks MKIV**  
R4015376



**New Style 24 VDC  
Plug-In Relay MKIV**  
RD0650Y07



**Jupiter Clark  
Transmission  
Speed Sensor**  
RH5133WAS



**Funk Speed Sensor  
MKIV**  
RB8668P31



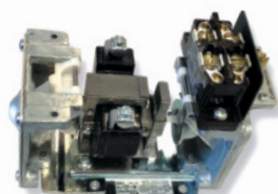
**Cable Assembly  
M12, M/PT06, 1  
(Goes to Inclinometer)**  
R5048566



**Breaker 30 AMP**  
RC9678Y12



**120 Volt AC SSR Relay MKIV**  
R0-3150021-0-03



**Traction Delay for MKII  
Harsco Backup Tamper**  
R04082019



**Cable Assembly**  
R414277



**Sync Cable**  
R4018523



**MKIV Jupiter M23-M Pig 10,  
Cable Assembly**  
R414273



**MKIV Power Relay**  
R172164 / CR1330



**Relay Socket**  
RD650Y04



**Floor Cycle Cable M12-90  
F/PIG 4M SH 5-CON**  
R4016221



**Cable for CAN**  
R414278



**Cable for CAN  
6 M23M Pig 5M**  
R414272



**MKIV Power Relay**  
R172164 / CR1330



**Relay Socket**  
RD650Y04



**Cable J1939 with Resistor**  
R4031474



**Cable J1939 No Resistor**  
R5000347



**MKIV System 5 L/H  
Keypad Cable**  
RB1813XAB / RCL2015



**MKIII Mode Switch  
Actuator KN**  
R0-3112001-0-02



**Two-Way Switch**  
RL410952



**M12 Splitter**  
R414260



**Cable M12-M-F  
0.5M SH 5-COND**  
R2013714



**String Pot Adapter Cable  
from String Pot to String Pot Cable**  
(Keeps from replacing whole cable due to wear)  
R510259



**Pigtail for Drone**  
R5054730



**Bias Cable for Receiver Buggy**  
R4022370

Also works for R4022368



**M12-M/PIG 4M 4-COND HF Cable**  
R3401339



**String Pot Cable, 15 M, M12 Female/Bare End**  
R0-3137013-0-16



**Jupiter M12 Cable Torque Tool**  
R3427735



**Jupiter Cable Wrench**  
RH6285X01



**M12 Male Connector**  
R0-3231007-0-53



**Jupiter 1 Pressure Sensor**  
RH5133WAE



**MKIV Jupiter Engine Temp Sender**  
RH5133WAT



**MKIV Temp Sender 100-300F**  
RH5133WAC



**Network Cable M/F**  
RH6339YAB



**Pigtail for Drone**  
R5054730

**Jupiter 1 Emergency Cable Kit MKIV Tamper R2018**

RCR Part #	Part Description	Qty
R3401329	Long Cable for MKIV String Pot, M12 Male / Female Cable / Pressure Transducer Converter Cable 32.81 ft	1
R4022375	M12 Female / DIN Connectors for Air Valves 32.81 ft	1
R4022342	M12 Female / DIN Connectors for Hydraulic Valves 32.81 ft	1
R3401346	M12 Male / DIN Connectors & Tranzorb for Hydraulic Valves 32.81 ft	1
R4015775	M12 Female / Bare for Switch Inputs 32.81 ft	1
R3401332	M12 Male / Bare for Field Power 32.81 ft	1

**Additional Cables We Offer**

- R3401324- 1 Meter
- R3401325- 2 Meter
- R3401326- 3 Meter
- R3401327- 5 Meter
- R3401328- 5 Meter
- R3401329- 10 Meter
- R3401332- 10 Meter
- R3401336- 4 Meter
- R3401337- 6 Meter
- R3401339- M12 Male/Pigtail
- R3401341- 1 Meter
- R3401342- 2 Meter
- R3401343- 3 Meter
- R3401344- 5 Meter
- R3401346- 7 Meter
- R4015775- 10 Meter
- R4016221- 4 Meter
- R4022325- 1 Meter
- R4022326- 2 Meter
- R4022327- 3 Meter
- R4022329- 5 Meter
- R4022330- 7 Meter
- R4022331- 10 Meter
- R4022333- 3 Meter
- R4022334- 5 Meter
- R4022336- 1 Meter
- R4022338- 3 Meter
- R4022341- 7 Meter
- R4022342- 10 Meter
- R4022346- 2 Meter
- R4022353- 1 Meter
- R4022354- 2 Meter
- R4022356- 10 Meter
- R4022358- 5 Meter
- R4022369- 2 Meter
- R4022370- 3 Meter
- R4022371- 5 Meter
- R4022375- 10 Meter

**Jupiter 2 Emergency Cable Kit MKIV Tamper R2019**

RCR Part #	Part Description	Qty
R4022331	Network Cable 32.81 ft	1
R3401329	M12 Male / Female Cable 32.81 ft	1
R4022375	M12 Female / DIN Connectors for Air Valves 32.81 ft	1
R4022342	M12 Female / DIN Connectors for Hydraulic Valves 32.81 ft	1
R3401346	M12 Female / DIN Connectors & Tranzorb for Hydraulic Valves 32.81 ft	1
R4015775	M12 Female / Bare for Switch Inputs 32.81 ft	1
R3401332	M12 Male / Bare for Field Power 32.81	1



**Encoder**  
R5004402



**Encoder for Drone**  
R5001513

Please note that the Drone Encoder and the Encoder are not the same item. They are not interchangeable.



**Pressure Transducer MKIV**  
0 to 10,000 PSI  
R4008374



**Gang Push Button Switch**  
RD8514Y01



**MKIV LED, 6 Chip, 24V, Yellow**  
R0-3101019-0-33



**MKIV LED, 6 Chip, 24V, Red**  
R0-3101019-0-36



**Encoder Shaft Coupler**  
R0-3624024-0-04



**Optical Encoder**  
R0-3160001-0-04



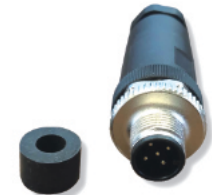
**Encoder Shaft Adapter - Old Style**  
RA1917Y01



**MKIV Lamp**  
RB0881Y03



**MKIV #51 Switch**  
RA9264Y17



**M12 Male Straight Field Wire Able Connector**  
R2020



**Push Button Switch**  
RA0655Y02



**Wiper Motor MKIV Tamper**  
R0-3502007-0-02



**Foot Switch M12 Connector**  
RC5363WAK



**MKI, II, III Foot Pedal Index Cycle**  
R0-3115000-0-02



**Kato Generator (Exchange) MKI, II, III**  
RZZ820EX



**M12 Female Straight Field Re-Wireable Connector**  
R2021



**Manuel Pump Box Assembly**  
RH6204YAA



**Squeeze Pressure Switch**  
RL40624



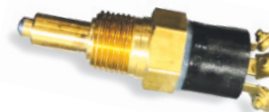
**Fuel Gauge Sender Assembly**  
RH5133WAK



**MKIV Temp Switch 180 Degree**  
RA1556Y09



**Traverse Lock Hydraulic Cylinder**  
MKI, II, III, IV  
R0-3372001-0-01



**MKIV Temp Switch 70 Degree**  
RA1556Y08



**Water Temp Sender**  
RA1556Y06



**Temp Sender**  
RA1556Y21



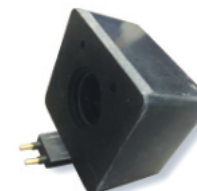
**Male Rod End 1/2"**  
R0-3652053-0-02



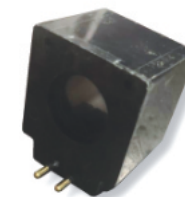
**New MKIV VME Slow Speed Linear Actuator Connector MKIII, IV**  
RC0046XAA



**Coil for MKIII**  
R0-3339031-0-01



**Rex Roth Coil**  
R900219602



**Coil**  
R0-3339031-0-08RX



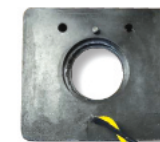
**Pivot Pin**  
RA0926Y01



**MKIII, IV Surfacing Actuator for Jupiter**  
RC0046XAC-N



**ESTR Vent Valve MKIII**  
R900020175



**D05 Conduit 110 Volt for MKIII**  
R900019801



**Coil for Travel for Variable Speed Motor**  
RC8058Y16 / R902602670



**Alternator for MKIV**  
R0-3183005-0-02



**Pressurizer Blower Motor**  
RG1688P16



**Proximity Sensor for the Durst Transmission**  
R3400890



**Coil**  
RF026061



**Electric Fan 24 Volt for Cab**  
RL425984



**Connector Terminating**  
R414751



**MKIV HD Speed Sensor Rear End**  
R2006509



**Master Switch for Battery on MKIV**  
R0-3180004-0-04



**Barksdale Pressure Switch**  
R96201



**Bullet Projector Assembly**  
R5033792



**String Pot 30" .024 String (Jupiter) MKIV**  
R0-3137013-0-14



**String Pot 30" .024 String (Non-Jupiter) MKIV**  
R0-3137013-0-13

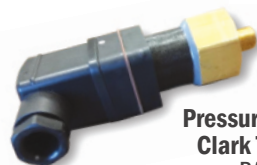


**Socket Head DIN Connect Adapters**  
R100570

**Stator Rewound and Notched (Exchange with Rebuildable Core)**  
RE-1404809-0-01



**Hydraulic Valve Connector MKIV**  
R0-3230020-0-01



**Pressure Switch MKIV Clark Transmission**  
RA7081Y13



**Air Dryer 24 Volt or 12 Volt**  
RC9785X15 / R2003175

(Please specify.)



**Connector Assembly**  
R3406480



**Neutral Switch**  
R414442



**17" Touch Screen Monitor with Cable  
for Jam Box**  
R2014998

# MKI, II, III, IV SURFACING/LINING





**MKIV Shadow Board  
Frame Weldment**  
RC0780VAB



**Base Weldment 20 1/2"**  
RD4441WAA / R4102300

**HD Base Weldment 17 1/2"**  
R4012300



**Vertical Tube for Base Weldment**  
RC8826XASB / R4012337



**Axle Mount for Buggy**  
RA6819WAA



**Buggy Axle Weldment**  
RA8215XAA



**Shadow Board Wheel  
with Bracket**  
RA0219WAA - Right Hand  
RA0219WAB - Left Hand



**Receiver and  
Shadow Board Wheel  
Assembly and Axle  
- No Bracket**  
RA0219WAAB



**Buggy Support Weldment Upper  
Complete with Air Cylinders  
and Lock Pins**  
RH5932VAA



**Complete Quick Deployment Buggy Air Lock  
Conversion Kit with Upper Buggy Support Weldment**  
R9254-217-COMplete



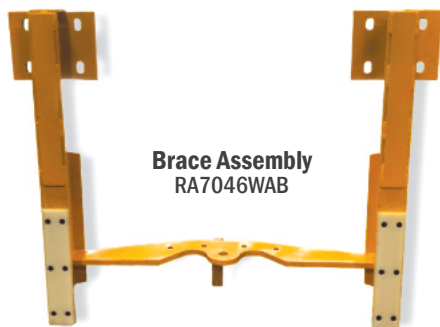
**Old Style Buggy Support Bracket  
No Air Cylinders**  
RA704WAD



**Spring Extension Air Cylinder**  
R0-3470019-0-18



**Buggy Weldment**  
RG7721WAA



**Brace Assembly**  
RA7046WAB



**Quick Deployment Buggy Air Lock Conversion Kit**  
R9254-217

**Needing a custom  
assembly or kit?**

Let us know if your maintenance-of-way crew has specific needs. We will work with you to find the best solution for your rail maintenance projects!



**Quick Deployment  
Storage Bar**  
RA7367X01





**MKIII, IV Light Shield  
(Splashboard)**  
RA8786X03



**Right/Left Liner Flag**  
RA0900W01



**Insulating Bushing  
for Receiver Buggy**  
RZ752202-0-001



**Insulating Washer  
for Receiver Buggy**  
RZ762124-001



**1/2" Fine Thread Male Rod End  
with Stud for Liner Projector**  
RD4827Y01

**MKIII 1/2 Encoder  
Wheel Bracket**  
R0-2202624-0-01



**New MKIV VME Slow Speed Linear Actuator  
Connector MKIII, IV**  
RC0046XAA



**Male Rod End 1/2"**  
R0-3652053-0-02

**Rebuilt MKIV VME Slow Speed Linear Actuator  
Connector MKIII, IV**  
RC0046XAARB



**Pivot Pin**  
RA0926Y01

**MKIII, IV Linear Actuator Assembly VME**  
RC0046XAB



**New Linear Actuator for Jupiter  
with Turck Connector IV**  
RC0046XAC-N



**Actuator Boot**  
RA7347Y01

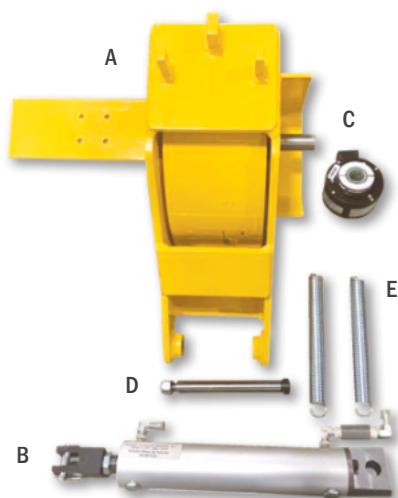
**Rebuilt Linear Actuator for Jupiter  
with Turck Connector IV**  
RC0046XACRB



**Linear Actuator for Mechanic Chair**  
RC8681X01



**Hexagon Bearing MKIII, IV  
for Guide Assembly Flag  
Liner, Surface**  
RA2932Y01



**(A) Encoder Wheel Assembly - Complete**  
R69427WA6

**(B) Encoder Wheel Air Cylinder**  
RA1901YAA

**(C) Encoder**  
R5004402

**(D) Shoulder Bolt for Encoder**  
RZ752500-041

**(E) Spring for Bias Buggy on Projector Buggy**  
RL4103356



**Support Arm Assembly  
MKIII & MKIV Actuator Support**  
RB4838XAA



**Inner Tube Guide**  
RC6475XAA



**Guide Assembly Flag**  
RA9091XAA



**Infrared Lens**  
R4028400



**New Style MKIV Projector Buggy**  
Comes with wheels, axles, mounting brackets for cable junction box, lazer box and the aluminum lazer buggy bracket.  
Excludes Cradle  
R5060788



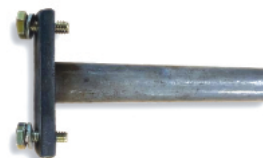
**Buggy Lock-Up Bracket**  
RA8205WAA



**Bare Project Buggy Complete**  
(No Projectors, Cradle or Lasers)  
MKIV with 4 Wheels  
RA8235VAC



**Mount for Bias Cylinder**  
R5045869



**Pivot Pin for Front Buggy**  
R0-2306204-0-01



**Projector Buggy Bias Air Cylinder**  
R0-3470019-0-06



**Wheel Shaft Kit for Projector Buggy MKIII, IV**  
R0-1304933-0-01-KIT



**MKIII MKIV Front Buggy Lift Valve**  
RL410606



**Axle Weldment, Front**  
R5056266



**Chain for Bias Buggy on Projector Buggy 2 Feet**  
RL422283

RCR Part #	Part Description	Qty
R0-1304933-0-01	Wheel Shaft for Projector Buggy MKIII, IV	1
RL40008	5/8 Lock Nut	1
RZ685917	Insulating Bushing	1
RZ62175	Insulating Washer	2
R33863	5/8 Flat Washer for Buggy Axle	1
RZ750057	Nylon Washer for Buggy Wheel	1



**Insulating Bushing**  
RZ685917



**Spring for Bias Buggy on Projector Buggy**  
RL4103356



**10" Aluminum Buggy Wheel with Axle**  
R0-2201452-0-01



**Weldment, Pivot Axle 56.5 GA**  
R5044879



**Pivot Axle**  
RA1109YAA



**Insulating Washer**  
RZ62175



**5/8 Flat Washer for Buggy Axle**  
R33863



**Snap Ring for the Bias Cylinder or Buggy Wheel**  
RL40001



**5/8 Lock Nut**  
RL40008



**Projector Buggy  
Wear Pad**  
RA7019Y01

**Slide Pad Shim for Receiver  
Buggy Slide Pad MKIV**  
RD1009Y01



**Slide Pad Shim for Receiver  
Buggy Slide Pad MKIV**  
RD1009Y03



**Slide Pad Shim for Receiver Buggy MKIV**  
RD1009Y02



**Receiver Buggy Slide Pad**  
RC0679Y01



**MKIV Air Bias Cylinder for Receiver  
and Shadow Board**  
RG5869Y01

Complete with Air Fitting and Rod Ends  
Part # R0-2303635-0-06



**MKIV Shadow Board  
Lift Cylinders**  
RC0839Y01



**Spacer for Shadow  
Board Wheel**  
RZ752201



**Screw for Receiver Buggy  
Slide Pad and Shim**  
RA0042009



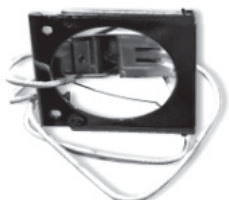
**Receiver Arm  
Tube Weldment**  
RD4427XAA



**Photocell Reflector  
Assembly for Surface**  
MKI, II, III, IV Lead Sulfide  
RL410284



**Projector Bulb  
MKI, II, III, IV**  
RB9263Y01



**Bulb Holder MKI, II, III, IV**  
RC8106Y01



**Lock Pin 3/4"**  
R4000334 / RH403Y01



**Lock Pin 1"**  
R4000335 / RH4023Y02



**Clevis**  
R0-3014001-0-08



**Double Action Air Cylinder MKIV**  
R0-3470019-0-14



**Buggy Lift Cylinder 1" Shaft MKIV**  
RA1593Y12 / RG7733YAA



**Adapter Plate Assembly  
Projector Liner Base**  
RY690486



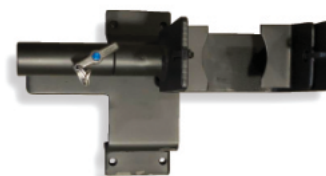
**Actuator Guide**  
RC8834WAA



**Bullet Projector Assembly**  
R5033792



**Bullet Projector Assembly MKIV**  
R5033556



**Bullet Projector Light Mount MKIV**  
R5034309



**New Double Barrel Receiver**  
R4007012

**Double Barrel Exchange Only**  
(Must have Rebuildable Core)  
R4007012EX

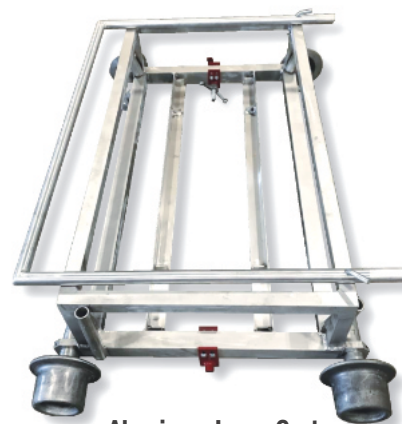


RG7897WAA / R5056896  
RG7897WAA-C (Wired)

**Complete Rapid Deployment Roller Buggy MKIV Heavy-Duty (No Wiring)**



**New Style Easy Repair for Rapid Deployment End Cap**  
R0-3652049-0-01-NS

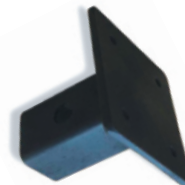


**Aluminum Laser Cart for MKIV Buggy**  
R2014332



**D05 Valve Assembly Squeeze Cylinder for MKIV / Direction Hook Valve for MKIV, Clamp Valve**  
R0-3333037-0-09

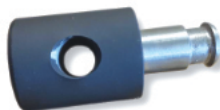
**Projector Mounting Bracket**  
R0-2304178-0-01



**Extension Bar**  
R0-1500299-0-18



**MKIV Cradle Assembly**  
R0-2100917-0-11



**Upper Pin Retainer for Buggy MKIV**  
R4011214



**Steel Extension Arm**  
R5036083



**75-Degree Bias Wheel with Bracket**  
R0-2302071-0-05



**60-Degree Bias Wheel and Bracket**  
R0-2302071-0-04



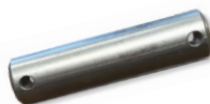
**Projector Liner Carriage Support Bracket**  
RX763526-001



**Cradle Bracket for Buggy**  
RX763526-003



**Bias Wheel for Projector Buggy**  
RC1695X01



**Two Hole Pin**  
RA0973T24



**Pusher Buggy Pin with (2) 1/4 - 20 x 5/16 Socket Head Set Screw**  
RA0957T45



**Bias Wheel Insulating Kit**  
RZ750036-KIT

RCR Part #	Part Description	Qty
RZ750036	Insulating Plate	1
RZ685611	Insulating Tubes	3
RZ750057	Insulating Washers	8

**Pin for Buggy Lift**  
RC0584Y01



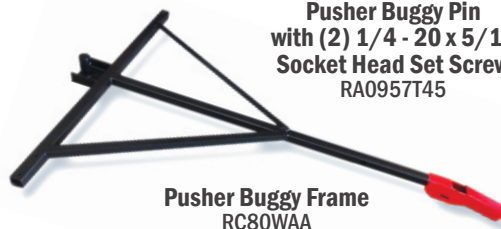
**Insulating Plate**  
RZ750036



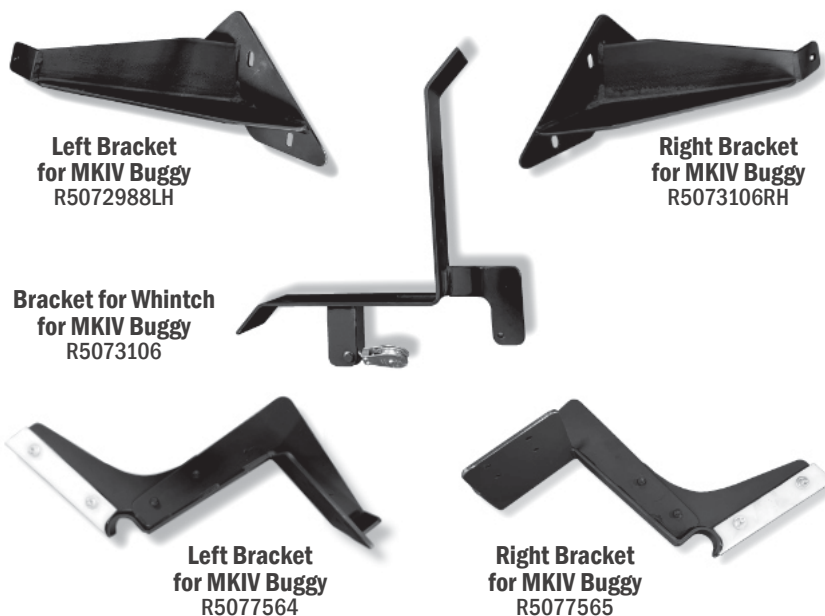
**Insulating Washer**  
RZ750057



**Aluminum Buggy Wheels**  
RX685831



**Pusher Buggy Frame**  
RC80WAA



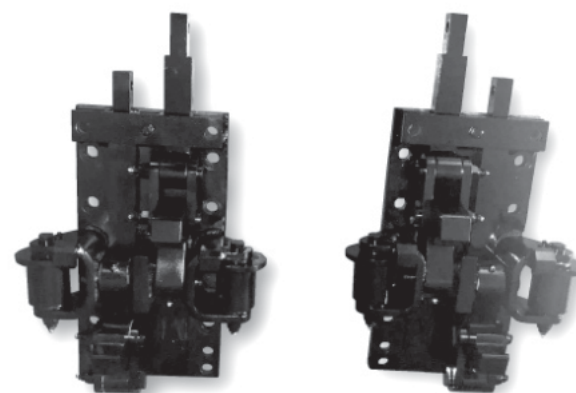
**Left Bracket  
for MKIV Buggy**  
R5072988LH

**Right Bracket  
for MKIV Buggy**  
R5073106RH

**Bracket for Whintch  
for MKIV Buggy**  
R5073106

**Left Bracket  
for MKIV Buggy**  
R5077564

**Right Bracket  
for MKIV Buggy**  
R5077565

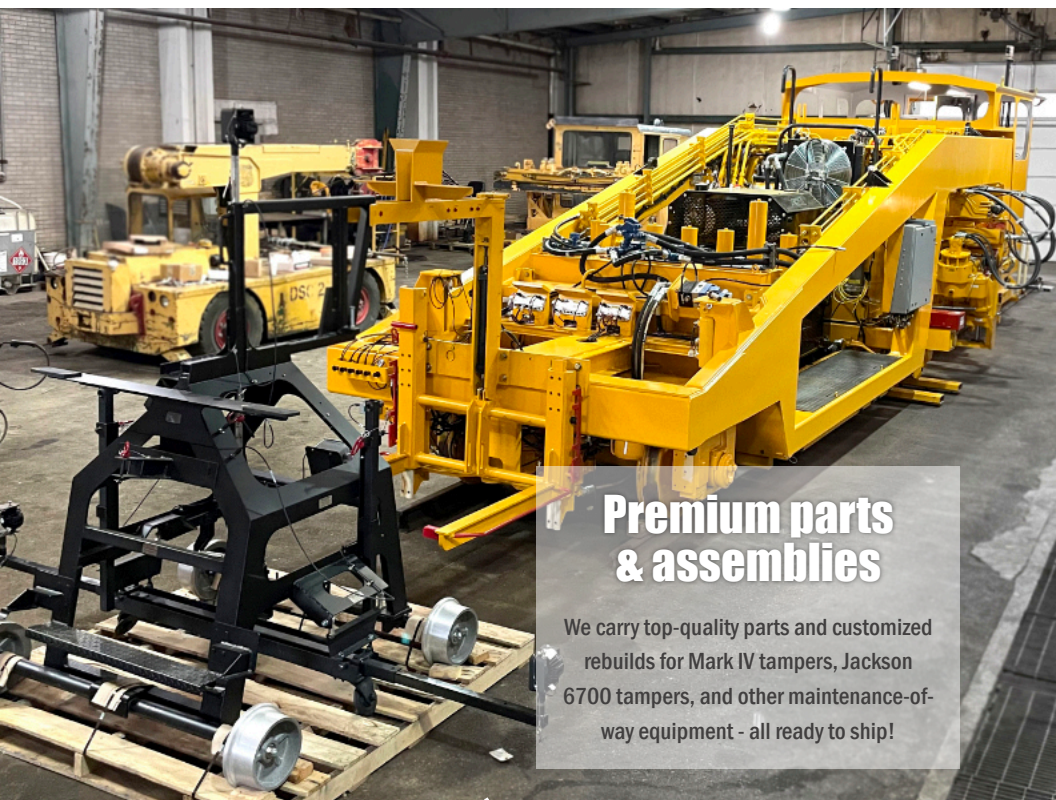


**Rail Clamp Assembly Complete Left**  
MKI, II, III, ECTRT, TR10  
RW68348L

**Rail Clamp Assembly Complete Right**  
MKI, II, III, ECTRT, TR10  
RW68348R

**Rail Clamp Assembly Left - Exchange**  
MKI, II, III, ECTRT, TR10  
RW683484LEX

**Rail Clamp Assembly Right - Exchange**  
MKI, II, III, ECTRT, TR10  
RW683484REX



**Premium parts  
& assemblies**

We carry top-quality parts and customized rebuilds for Mark IV tampers, Jackson 6700 tampers, and other maintenance-of-way equipment - all ready to ship!



**Liner Flex Cable 180"**  
R0-3626005-0-02



**Spacer**  
RH0323Y01



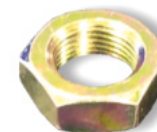
**Gimbel Assembly**  
R0-2303638-0-03



**MKIII, MKIV Shadow Board  
with 3/4 Fine Thread**  
R0-3652048-0-01



**3/4" Heavy Lock Washer**  
RA0061024



**3/4-16 Heavy Jam Nut**  
RA0056035



**Shadow Board Axle**  
RZ752197



**Threaded Rod 13" Long**  
RA0601T45



**Spacer for Air Cylinder  
for Shadow Board**  
RA0215T46



**Two Hole Pin**  
RB5391T82 / RA0973T22



# MKI, II, III, IV DRIVETRAIN





**Rebuilt MKIV Clark Transmission  
(Exchange Only)  
RD4664Y02-REX**



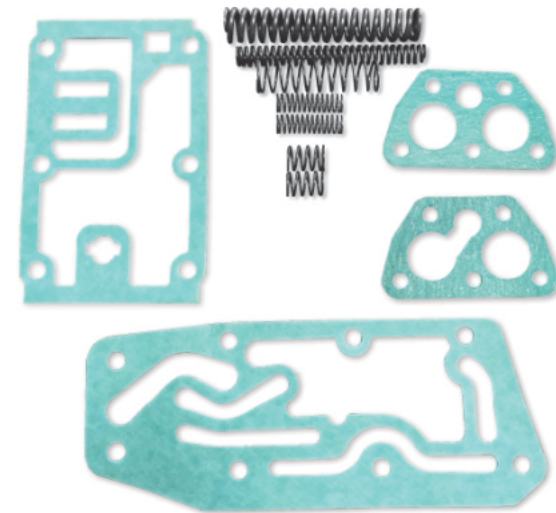
**Chain Guard  
for MKIV Clark Transmission  
RD6244W01**



**Electric Control Valve Assembly  
for Clark Transmission  
(Exchange Only)  
RD8489P64**



**Clark Transmission Coil  
RD8506Y01**



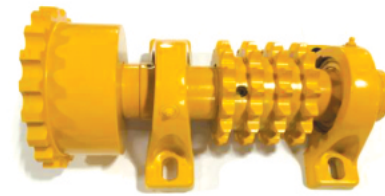
**Spring End Gasket Kit  
for MKIV Transmission  
RD8489P64-9TE1**



**MKI/MKII Complete Center Axle Suspension Assembly**  
RW690833-02CW



**Complete Rebuilt Carrier with Ring and Pinion (must have rebuildable core)**  
RL423539-R



**Jack Shaft Assembly MKIII, IV**  
R0-2304402-0-55



**Funk Speed Sensor MKIV**  
RB8668P31 / R0-3110025-0-08

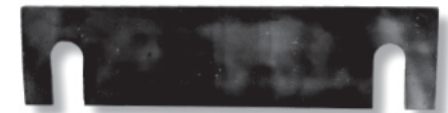
**Ring Gear Carrier**  
RL424128



**3rd Member MKI/MKII (does not include Ring and Pinion)**  
RL423539



**Bearing Shim**  
RD7603Y02



**Shims**  
RD7603Y01



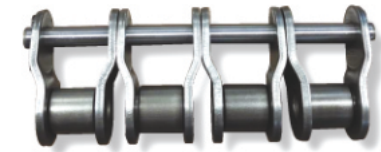
**Guide Assembly for MKIV Brake Assembly**  
R4015002



**Ring Gear and Pinion**  
RL423560



**MKIII, IV Split Drive Sprocket**  
R0-1303161-0-01



**80 x 4 Offset Links**  
R0-1405840-0-01



**Drag Link**  
R4014888



**MKIV Front Two-Speed Transmission Rebuilt**  
RB9691X01-RB



**MKIII Riveted Roller Chain**  
R0-1405839-0-03



**Single 60-1 Traverse Chain 10ft Sections with Master Link**  
R0-1302082-0-01 / RA1294Y01



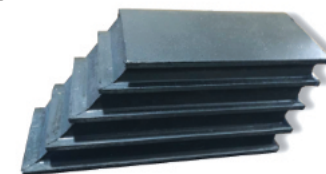
**Two-Speed Air Shift Cylinder Kit - Two-Speed Funk**  
RA3651Y07-KIT



**Adjustable Bracket Weldment for Funk Two-Speed Transmission Shifter**  
RC7642YAA

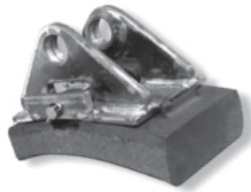
**MKIII, IV Roller Chain Heavy-Duty High Tensile Strength**  
R0-1405839-0-01-HD

**Standard Roller Chain**  
R0-1405839-0-01



**Pad/Spring**  
R0-3641005-0-01

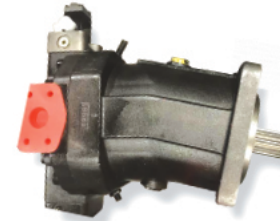




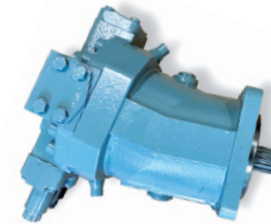
**MKI, II Cobra Brake Shoe with Adapter Plate**  
RY54559-001S (Special)



**Adjustment Screw for Rear Brake**  
MKIV, Jackson 6700  
R223021-1



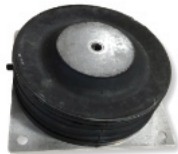
**Projector Rear Variable Displacement Drive Motor IV**  
(Exchange Only)  
RC5881Y02



**Variable Displacement Motor for HD and Drone**  
R4029264



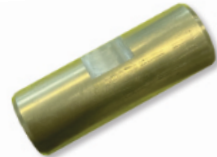
**Dennison Rear Travel Motor MKIII**  
RA4124Y01D



**Cab Mount MKIV**  
RC6337Y01



**MKIII, IV Cobra Brake Shoes**  
R0-3683003-0-02 / R415597



**Adapter for Cab Mount**  
R4088



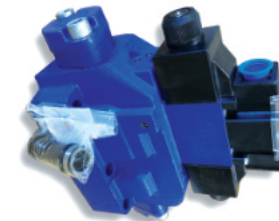
**Brake Arm Key**  
R116716-1



**Key for Brake Arm**  
R222947-1



**MKIII Traction Motor**  
R0-3317006-0-08



**Front Drive Motor Valve Assembly MKIII**  
R0-3333039-0-04



**MKIV HD/Drone and Jackson 6700 with (Durst Rear End) Brake Shoe**  
No Tabs  
R218045-1 / R220550-01



**Adjusting Rod End for Brake**  
R0-1305163-0-01



**Rear Traction Subplate**  
RD6328X01



**Front Subplate D08**  
R0-3361004-0-05



**Spring Keeper for Break Shoe**  
R0-1305255-0-01



**Air Break Pin**  
R0-3015002-0-25



**MKIII & MKIV Clevis Pin for Brake Arm**  
R0-3015002-0-22



**Brake Show Retainer**  
R112482-1



**Need help finding something?**

Just because you don't see what you need in this catalog doesn't mean we can't help you get it. We are constantly adding parts and assemblies to our stocked inventory, and we pride ourselves in helping you find just what you need. Give us a call!



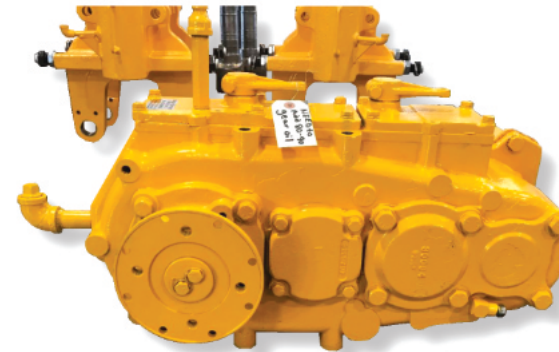
**Bushing for Brakes**  
R0-1404558-0-01



**Insulating Washer for Brakes**  
R0-1306629-0-01



**Drone, Jackson 6700 or a MKIV Rear Brake Chamber**  
R350886-1



**Funk 4-Speed Transmission (Exchange Only)**  
R0-2305242-0-02



**Rework Coupling MKIV Fits Clark Transmissions**  
R0-1202323-0-02



**Rear Transmission Link Bracket Assembly for MKIV, Drone, Jackson**  
R5011406-KIT

**Jackson, Drone, MKIV Link**  
R5011406



**Complete Counter Shaft Assembly (Exchange Only)**  
RX754110ACEX



**MKIV Funk Transmission / Rear Transmission Shift Air Cylinder Kit with Rod Ends**  
R0-3470014-0-01-KIT

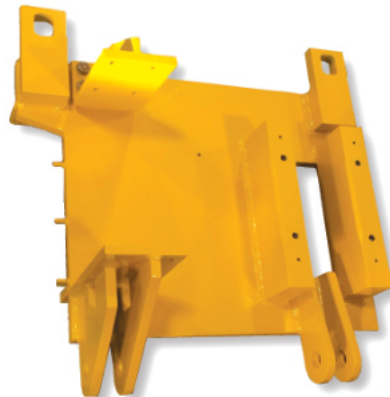


**Rework Coupling Fits MKIII, MKIV with Funk Transmissions**  
R0-1202323-0-01



**MKI, II, III Drive Belt Counter Shaft**  
RL40930-P

**U-Joint MKIII - Rear Drive Shaft**  
R2055110



**MKIV Transmission Mount for a Clark Transmission**  
RB9641WAC



**MKIII Sprocket Assembly**  
R0-2201787-0-01



**Clark Transmission Adjusting Bolt**  
R205217



**Shift Forks for Funk Transmission**  
R4012752



**Jupiter Clark Transmission Speed Sensor**  
RH5133WAS



**Mann Filter for Clark Transmission**  
R0-3350000-0-05



**MKIV Companion Flange for Clark Transmission**  
RD9167Y01



**Spacer Front Axle Transmission H/D**  
R112497-1

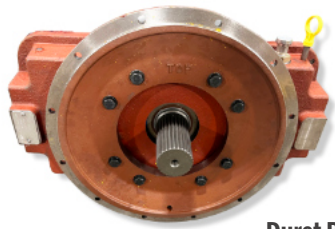
**MKIII, IV Coupling for Air Shift**  
R0-1407202-0-01



**Chain Tensioner Bolt for MKIII Jack Shaft**  
RA0036276



**MKIII, IV Pivot Shaft**  
RD7597X01



**Durst Pump Drive**  
R5004130



**Pin Weldment,  
Front Transmission**  
R5018125

**Steel Bushing for  
Transmission Pivot  
Pin (R5018125)**  
R4166



**Oil Seal**  
RD8489P01



**Funk Speed Sensor  
MKIV**  
RB8668P31



**Screw**  
R250010-270



**MKIII & MKIII 1/2:  
Clutch Cable -  
Push-PU**  
RX768469-004



**Throttle Control Cable  
for MKI, II**  
R0-3613000-0-01



**MKIII & MKIII 1/2:  
Shift Cable**  
RX768469-022



**4-Speed Funk Transmission  
Companion Flange MKIII, MKIV**  
RA2660P36

# MKI, II, III, IV KITS





**Complete Swivel Bracket Kit**  
RY684448-01-KIT

RCR Part #	Part Description	Qty
RY684448-01	Swivel Bracket MKI, II, III, IV	1
R4-2300189-0-01S	Floating Vertical Pin with Grease Holes Top and Bottom	1
R4-2400264-0-01	Floating Horizontal Pin with Nut & Washer MKI, II, III, IV	1
RZ68440-02S	Vibrator Connecting Pin 1 x 3 5/8" MKI, II, III, IV (Special)	2
RZ688521	Plate Lock MKI, II, III, IV	2
RA0043031	1/4" Socket Head with Lock Washer	4
	Loctite	2



**Heavy-Duty Squeeze Cylinder Kit**  
RX68297U-KIT

RCR Part #	Part Description	Qty
RX68297U	New Heavy-Duty Squeeze Cylinder MKI, II, III, IV	1
RC5405X6	Steel 90-Degree Male Elbow 3/8" OD Tube to 1/4" NPT	2
RZ68439-01	Carrier Connecting Pin 1 x 4 1/8" MKI, II, III, IV	1
RA0068029	Cotter Pin	2
RZ68440-02S	Vibrator Connecting Pin 1 x 3 5/8" MKI, II, III, IV (Special)	1
RA0043031	1/4" Socket Head with Lock Washer	2
RZ688521	Plate Lock MKI, II, III, IV	1
RZ682674	Squeeze Cylinder Spacer (Small) MKIII, IV	2

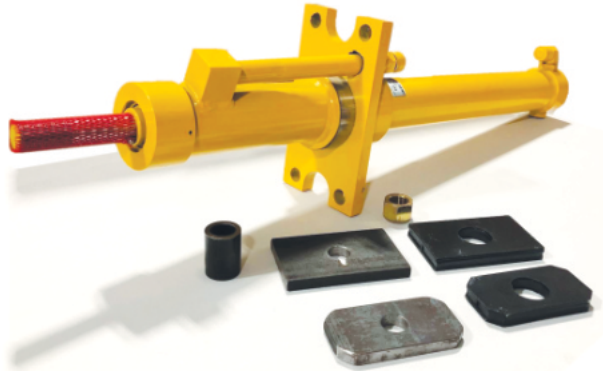


**Combo Jack Cylinder Pin and Hardware Kit Right Side  
(Steel Bushing)**  
R0-3095004-0-01-KIT-R/H

RCR Part #	Part Description	Qty
R0-3093401-0-01	Jack Cylinder Pin - Lower 1.5" OD MKIII, IV	1
R0-3095004-0-01	Jack Cylinder Pin - Upper 1.5" OD MKIII, IV	1
RA006830	1/4 x 1 1/2 Cotter Pin	2
RA0059012	1 1/2" Flat Washer	4
R0-3019004-0-13	Spacer (Combo Clamp) MKIII, IV	6
RZ767929-002	Insulated Spacer 1.5" Inside Diameter MKIII, IV	2
R0-1305801-0-01	Disk Xag MKIII, IV	2
RL424936	Spacer	8
RL424870	Retaining Ring MKIII, IV	2
RL424439	Spherical Bearing for Bias, Liner and Jack Cylinder	2
RD7190T06	Washer-Spacer Used in Liner Cylinder and Hook Box	6
RA6030Y02	Steel Bushing (Combo Clamp-Carrier Box 1.5" Inside Diameter) MKIII, IV	2

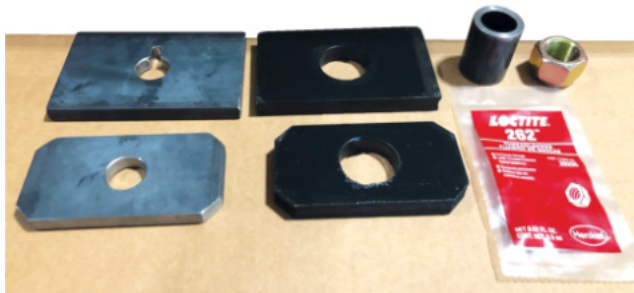
**Combo Jack Cylinder Pin and Hardware Kit Left Side  
(Insulating Bushing)**  
R0-3095004-0-01-KIT-L/H

RCR Part #	Part Description	Qty
R0-3093401-0-01	Jack Cylinder Pin - Lower 1.5" OD MKIII, IV	1
R0-3095004-0-01	Jack Cylinder Pin - Upper 1.5" OD MKIII, IV	1
RA006830	1/4 x 1 1/2 Cotter Pin	2
RA0059012	1 1/2" Flat Washer	4
R0-3019004-0-13	Spacer (Combo Clamp) MKIII, IV	6
RZ767929-002	Insulated Spacer 1.5" Inside Diameter MKIII, IV	2
R0-1305801-0-01	Disk Xag MKIII, IV	2
RL424936	Spacer	8
RL424870	Retaining Ring MKIII, IV	2
RL424439	Spherical Bearing for Bias, Liner and Jack Cylinder	2
RD7190T06	Washer-Spacer Used in Liner Cylinder and Hook Box	6
RA1856T04	Insulating Bushing (Combo Clamp-Carrier Box 1.5" Inside Diameter) MKIII, IV	2



**Lift Cylinder Kit  
RB5761XAA-KIT**

RCR Part #	Part Description	Qty
RB5761XAA	Lift Cylinder MKIV	1
R0-1404046-1-01	Retaining Plate C MKI, II, III, IV	1
R0-1404045-1-01	Upper Cushion Mount MKI, II, III, IV	1
R0-1404574-1-01	Lower Cushion Mount MKII, III, IV	1
R0-1404575-1-01	Retaining Plate MKI, II, III, IV	1
RL424662	ESNA Nut 1"-14 for MKIII, IV Lift Cylinder	1
R0-1404047-1-01	Spacer Bushing	1



**Replacement Kit for MKIV Lift Cylinder  
RB815713-KIT**

RCR Part #	Part Description	Qty
R0-1404046-1-01	Retaining Plate C MKI, II, III, IV	1
R0-1404045-1-01	Upper Cushion Mount MKI, II, III, IV	1
R0-1404574-1-01	Lower Cushion Mount MKII, III, IV	1
R0-1404575-1-01	Retaining Plate MKI, II, III, IV	1
RL424662	ESNA Nut 1"-14 for MKIII, IV Lift Cylinder	1
R0-1404047-1-01	Spacer Bushing	1

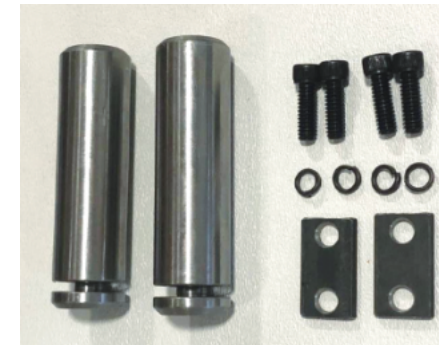


**Combo Clamp Small Roller Kit  
RA1681YAA-KIT**

RCR Part #	Part Description	Qty
RA1681YAA	Roller Assembly (Combo Frame Small) MKIII, IV	1
RD6987X01	Pin Roller (Combo Frame Small) MKIII, IV	1
RL40931	Nut (Pin Roller Small) MKIII, IV	1

**Combo Clamp Large Roller Kit  
R0-2305761-0-01-KIT**

RCR Part #	Part Description	Qty
R0-2305761-0-01	Roller Assembly (Combo Frame Large) MKIII, IV	1
RD6987X02	Pin For Roller (Combo Frame Large) MKIII, IV	1
R0-3011001-0-78	Nut (Pin Roller Large) MKIII, IV	1



**MKI, II, III, IV Vibrator Connecting Pin Kit  
RZ68440-02-KIT**

RCR Part #	Part Description	Qty
RZ68440-02S	Vibrator Connecting Pin 1 x 3 5/8" MKI, II, III, IV (Special)	2
RZ688521	Plate Lock MKI, II, III, IV	2
RA0043031	1/4" Socket Head with Lock Washer	4



**MKIV Shadow Board / Receiver Buggy Wheel Kit**  
RA0036331-KIT

RCR Part #	Part Description	Qty
RA0036331	Axle	1
RL40213	Bearing for Buggy Wheel	2
RZ752202-0-001	Insulating Bushing for Receiver Buggy	1
RZ752201	Spacer for Shadow Board Wheel	1
RZ762124-001	Insulating Washer for Receiver Buggy	2
RO-3011001-0-07	Lock Nut	1
RZ752199	Spacer	1
RZ752200	Spacer	1



**MKIII Shadow Board / Receiver Buggy Wheel Kit**  
RZ752197-KIT

RCR Part #	Part Description	Qty
RZ752197	Shadow Board Axle	1
RL40213	Bearing for Buggy Wheel	2
RZ752202-0-001	Insulating Bushing for Receiver Buggy	1
RZ752201	Spacer for Shadow Board Wheel	1
RZ762124-001	Insulating Washer for Receiving Buggy	2
RZ752199	Spacer	1
RZ752200	Spacer	1
R11103993	3/4 Jam Nylock Nut	1



**MKI, II, III, IV Carrier Hardware Kit**  
RZ68287-KIT

RCR Part #	Part Description	Qty
RZ68402-02	Stop Bolt with Bumper (Special Size) MKI, II, III, IV	4
RZ68287	Bronze Bushing (Carrier) with Wiper Seal & O-Ring MKI, II, III, IV	4
RZ68439-01	Carrier Connecting Pin 1 x 4 1/8" MKI, II, III, IV	4
RZ682674	Squeeze Cylinder Spacer (Small) MKIII, IV	8
RA0056015 / RF002753	1"-8 Hex Jam Nut	4
RA0061019	Lock Washer	8
RA006830	1/4 x 1 1/2 Cotter Pin	8



**Projector Buggy Derail Alarm Kit**  
R2015



**MKIII, IV Vibrator Carrier Kit**  
RE-2100706-0-01-K

RCR Part #	Part Description	Qty
RE-2100706-0-01LEX or RE-2100706-0-01REX	Rebuilt Vibrator Carrier MKIII, IV with Stop Bolts and Carrier Bronze L/H or R/H - Exchange (please specify right or left)	1
R0-1404016-0-01	Guide Rod 2 1/2 OD x 41 3/8" Long MKIII, IV	2
RY68375-01	Lower Cushion Pad MKI, II, III, IV	2
R0-1404015-0-01	Lower Adjusting Plate MKIII, IV	2
RZ68439-01	Carrier Connecting Pin 1 x 4 1/8" MKI, II, III, IV	4
RZ682674	Squeeze Cylinder Spacer (Small) MKIII, IV	8
RL420984	Guide Rod Bolt 1 1/4-12 x 3" MKI, II, III, IV	4
RA0061021	1 1/4 Heavy Lock Washer	4



**Insulation Kit for Wheel Shaft Projector Buggy with Nut**  
RZ76802-001

RCR Part #	Part Description	Qty
RZ62175	Insulating Washer	2
RZ750057	Nylon Washer for Buggy Wheel	1
R33863	5/8 Flat Washer for Buggy Axle	1
RL40008	5/8 Lock Nut	1
RZ685917	Insulating Bushing	1



**Hook Extend Cylinder Pin Kit**  
R2685110-KIT

RCR Part #	Part Description	Qty
R0-3095002-0-11	Pin - Slew Cylinder 1" OD MKIII, IV	2
RA4823Y01	Hook Extend Pin	2
RA1856T03	Bushing - Insulating (Combo Clamp - Hook) MKIII, IV	2
RA6030Y04	Bushing Steel (Combo Clamp - Hook) MKIII, IV	2
RA1072Y01	Plastic Washer (Combo Clamp 1" ID) MKIII, IV	2
RZ765375-001	Insulating Washer (Combo Clamp 1" ID) MKIII, IV	2
R0-3013001-0-05	Snap Ring for Hook Extend Cylinder Pin	4
RA0060021	1" Flat Washer	16
RA006830	1/4 x 1 1/2 Cotter Pin	4



**Workhead Air Lock Cylinder Kit**  
RY767203-001-KIT

RCR Part #	Part Description	Qty
RY767203-001ASY	Workhead Air Lock Cylinder Assembly	1
RL410848	Lock Handle Spring	1
RL420853	90-Degree Male Pipe Adapter	1





**Complete Combo Clamp Rebuild Kit (Excludes Guide Rods) R105110**

RCR Part #	Part Description	Qty
RL40705	Spherical Bearing for Bias, Liner, Jack Cylinder	4
RA1072Y01	Plastic Washer	2
RL424936	Spacers	12
R0-3013001-0-05	Snap Rings	4
RA4823Y01	Hook Extend Cylinder Pins	2
R0-3095002-0-11	Slew Cylinder Pin	4
RA6030Y02	Steel Bushing Combo Clamp 1.5" ID	2
R0-3019004-0-13	Spacer	6
R0-3019004-0-01	Insulating Disc	2
RL40931	Nut - Pin Roller, Small	2
RZ765375-001	Insulating Washer (Combo Clamp 1" ID) MKIII, IV	6
RZ767929-002	Insulating Spacers	2
RA1681YAA	Roller Assembly (Combo Frame Small) MKIII, IV	2
R0-2305761-0-01	Large Wheel Roller Combo	2
R0-3011001-0-78	Large Nut Pin Roller	2
RD6987X02	Pin Roller Large	2
R0-1203075-0-01	Insulating Plate	1
R424870	Snap Rings	4
R0-3652060-0-01	Hook Bushing	4
RA1856T04	Bushing	2
R0-1305728-0-01	Brass Carrier Box Combo Clamp 3"	8
RD6987X01	Pin Roller Combo Frame Small	2
RA1856T03	Bushing	4
RA0036341	Stop Bolt Combo MKIII	4
R0-3095004-0-01	Jack Cylinder Pin - Upper 1.5" OD MKIII, IV	2
RA6030Y04	Bushing Steel Combo Clamp	2
RA1856T05	Bushing	12
R0-3393001-0-05	Wiper Seal 3"	8
R0-3393001-0-06	Wiper Seal Large 4.5"	4
R0-1305774-0-01	Bias Cylinder Pivot Pin	1
R0-2305775-0-01	Pivot Pin Bias	1
R0-3015002-0-26	Liner Cylinder Pin	2
R0-3095002-0-09	Bias Pin MKIII, IV	1
R0-3093401-0-01	Jack Eye Pin Lower	2
RA6030Y05	Spacers	8
RA0056019	Jam Nut	4
RD7190T06	Washer/Spacer for Liner Cylinder	10
RA0060021	1" Flat Washer	20
RA0059012	1 1/2" Flat Washer	10
R0-3019004-0-08	2" Flat Washer	2
RZ683490	Washer	12
RA0059008	3/4" Flat Washer	12



**Treader Assembly with Brake Valve Complete**  
RL42296 / RL422295

**Bias Cylinder Pin Kit R265534-KIT**

RCR Part #	Part Description	Qty
R0-3095002-0-09	Pin - Bias MKIII, IV	1
R0-1305774-0-01	Bias Cylinder Pivot Pin	1
R0-2305775-0-01	Pivot Pin Combo Clamp - Bias 1.5" OD MKIII, IV	1



**Slew Cylinder Pin Kit Set Complete - Excludes Cylinder RB7036WAC-KIT-W/O**

RCR Part #	Part Description	Qty
R0-3095002-0-11	Pin - Slew Cylinder 1" Outside Diameter MKIII, IV, Hook Cylinder Pin	4
RZ765375-001	Insulating Washer (Combo Clamp 1" ID) MKIII, IV	4
RA0060021 / R0-3019004-0-12	1" Flat Washer	16
RA1856T03 / RZ65379-001	Bushing-Insulating (Combo Clamp-Hook) MKIII, IV	2
RA006830	1/4 x 1 1/2 Cotter Pin	4



**Workhead Pin Kit (1 Side)**  
RZ68440-02S-KIT

RCR Part #	Part Description	Qty
RZ68440-02S	Vibrator Connecting Pin 1 x 3 5/8" MKI, II, III, IV (Special)	4
RZ68439-01	Carrier/Squeeze Cylinder Connecting Pin 1 x 4 1/8" MKI, II, III, IV	4
RZ688521	Plate Lock MKI, II, III, IV	4
RA0043031	1/4" Socket Head with Lock Washer	8



**MKIV Squeeze Sandwich Flow Control Valve Kit**  
R5043252

RCR Part #	Part Description	Qty
R5033983	Hose Bracket for Squeeze Flow Control Kit	2
RO-3335018-0-02	Flow Control Valve D05	2
RF016945	DC - Tee 8x8 BH x 8	2
RF020452	DC - STR 4x4 BH	2
RF040408	Adapter Straight DC - STR 12x12 BH	4
RD2350Y01	Decal, Caution Lock Pins	2
RF012241	Washer, Lock, 1/4" High Collar	8
RA0041216	DC - 1/4-20 x 3-3/4 SKT HD CS	8
RF014861	CD - STR 8x8 BH	2
RF024758 / R150114-2	Adapter STR, 08J1C-SWX04J1C - Reducer	2



**Dual Liner Kit**  
R5046160



**Liner Cylinder MKIV Bias Cylinder MKIV Seal Kit**  
RB5430YAA



**MKI, II Lift Cylinder Seal Kit**  
RZ687106



**Squeeze Cylinder Seal Kit**  
RZ687107



**MKIII Bias Cylinder Seal Kit**  
RO-3379004-0-01



**MKIV 6" Jack Cylinder Seal Kit**  
RB5432YAA



**MKIV Lift Cylinder Seal Kit + Slew Cylinder**  
RB5428YAA



**Lock for Top Slider**  
RC9402Y01-KIT

Comes with RA0060018, RO-3015001-0-35, RC9402Y01, RL41005, RZ710103, RO-3015001-13



**Wheel Shaft Kit for Projector Buggy MKIII, IV**  
RO-1304933-0-01-KIT

RCR Part #	Part Description	Qty
RO-1304933-0-01	Wheel Shaft for Projector Buggy MKIII, IV	1
RL40008	5/8 Lock Nut	1
RZ685917	Insulating Bushing	1
RZ62175	Insulating Washer	2
R33863	5/8 Flat Washer for Buggy Axle	1
RZ750057	Nylon Washer for Buggy Wheel	1



**Sliding Axle Seal Kit MKIV**  
R0-3371069-0-02



**Complete Quick Deployment Buggy Air Lock Conversion Kit with Upper Buggy Support Weldment**  
R9254-217-COMPLETE



**Quick Deployment Buggy Air Lock Conversion Kit**  
R9254-217



**Pivot Lockout Valve Assembly**  
RC9088XAA

Please note: This does not come assembled for easy installation.



**Oil Cooler Fan Motor Valve Assembly**  
RG0686XAD

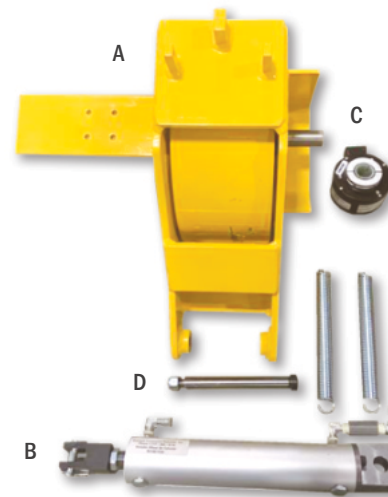


**Bullet Projector Assembly**  
R5033792



**Bias Wheel Insulating Kit**  
RZ750036-KIT

RCR Part #	Part Description	Qty
RZ750036	Insulating Plate	1
RZ685611	Insulating Tubes	3
RZ750057	Insulating Washers	8



**(A) Encoder Wheel Assembly – Complete**  
R69427WA6

**(B) Encoder Wheel Air Cylinder**  
RA1901YAA

**(C) Encoder**  
R5004402

**(D) Shoulder Bolt for Encoder**  
RZ752500-041

**(E) Spring for Bias Buggy on Projector Buggy**  
RL4103356



**Rear Slider Kit for 1 Frame**  
RC0694XAA-KIT

RCR Part #	Part Description	Qty
RZ750978	1/2" Drilled Bolts	10
RA0061023	Heavy Duty 1/2 inch Lock Washer	10
RA0042024	Screw Allen FLT HD 1/2-13 x 1-1/4	5
RC0693X01	Shim Support Block	4
RC0694XAA	Support Block Assembly Rear Slider - 2 per Side MKIII, MKIV	2



**Top Slider Pad Replacement Kit**  
RO-1304828-0-1S-KIT

RCR Part #	Part Description	Qty
RO-1304828-0-01S / RG0852YAA	Slide Pad - No Notch with Threaded Inserts MKI, II, III, IV	2
RO-1304826-0-01S	Stop Pad with Threaded Inserts (New Style) MKI, II, III, IV	2
RF00114	5/16" Drilled Bolt	12



**Door Latch/Lockset**  
R5006704



**Pressure Transducer Kit**  
R4015869



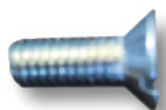
**Boss O-Ring Kit for MKIV Tamper**  
RA4839Y01



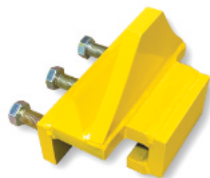
**MKI, MKIV Door Latch**  
RL425565



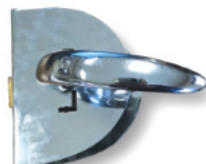
**Spacer, Latch Handle**  
R4011890



**#10-32 x 1/2 FLHD MS**  
RA0052012



**Stop Block for Rail Car**  
R2460860-STOPBLOCK



**Swing Door Latch**  
R4011386

**We can customize a kit for you!**

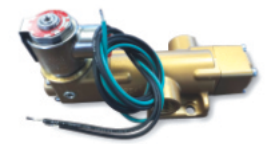
If your team needs a tailored maintenance kit, just let us know. We will work with you to put together the best kit to suit your needs!

# MISCELLANEOUS





**Plazer Dyna Cat GRM 3000  
Liner Buggy with Wheels  
R365-832**



**TR10 Stabilizer Bar  
R0-2202632-0-03**

**TR10 Brake Index Valve  
R0-3412004-0-02**



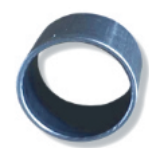
**Snap Bushing 1" OD x 3/4" ID x 1"  
R502549002**



**TR10 Tie Clamp/Jaw  
Pivot Head Weldment  
RA5041WAA**



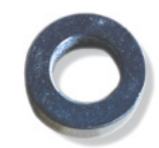
**TR10 Small Tube  
RB0147WAA**



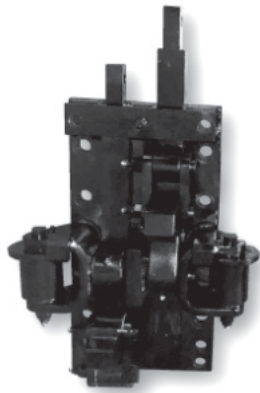
**Bottom Splitter  
Sensor Bracket  
R0084**



**Front Stabilizer Spacer  
for Jackson 6700  
R222732-1**



**Shift Bracket Spacer  
for Jackson 6700  
R00-00555**



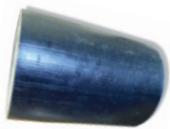
**Rail Clamp Assembly Complete Left**  
MKI, II, III, ECTRT, TR10  
RW68348L



**Rail Clamp Assembly Complete Right**  
MKI, II, III, ECTRT, TR10  
RW68348R

**Rail Clamp Assembly Left - Exchange**  
MKI, II, III, ECTRT, TR10  
RW683484LEX

**Rail Clamp Assembly Right - Exchange**  
MKI, II, III, ECTRT, TR10  
RW683484REX



**Marsh Mellow Spring**  
R251402-1



**Shut-Off Valve MKIV,  
6700, Drone, STM**  
RD1735Y01



**Swing Arm for Spiker or Spike Puller**  
Fits a 2" Receiver for High Rail Truck  
R4523154



**Pull Rod**  
RY683440



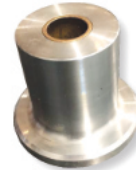
**Push Rod**  
RY683439



**Rail Shaft**  
RZ683432



**Link Bolt**  
RZ683433



**Rail Wheel**  
RY683655



**Cylinder Bushing  
(Rail Clamp)**  
RZ683488



**Rail Clamp**  
R0-2300171-0-01



**Link**  
RZ683435



**Anti-Rotation  
Washer**  
RA9264Y06



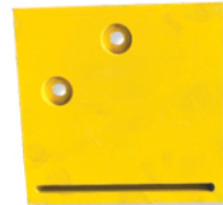
**Clamp Bushing (Large)**  
RZ683436



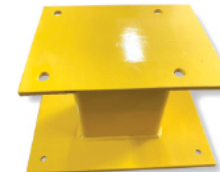
**Holder Rail Sweep  
for 6700**  
R115840-1



**Plate Lock**  
RZ54903-001



**Proximity Sensor  
Bracket**  
R00-00100



**Seat Base for 6700**  
R2002555



**Screw-Shulder, SHC**  
.62 x 4.00 Jackson 6700  
R250250-12



**Mechanical Level Gauge**  
R0-3307009-0-04



**Drive Belt for Kershaw 875 Regulator**  
R201170





**NEW PARTS**

**New Ballast Plow Side Wing Right Hand**  
R96810020

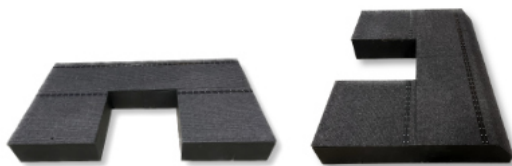
**New Ballast Plow Side Wing Left Hand**  
R96810019



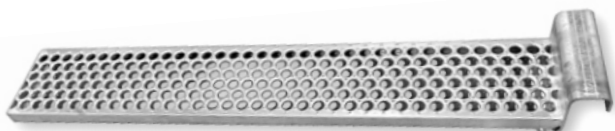
**REBUILT PARTS**

**Rebuilt Ballast Plow Side Wing Right Hand**  
(Must have core to rebuild)  
R96810020-RB

**Rebuilt Ballast Plow Side Wing Left Hand**  
(Must have core to rebuild)  
R96810019-RB



**MKIV Cab Storage Box**  
R1723



**Platform inside Middle**  
R2014218

**Heavy duty, top of the line.**

With our in-stock, ready-to-ship parts and assemblies, you can be sure you are getting top quality items that will increase your equipment's efficiency and durability. Just let us know what you need.

# JACKSON 6700, PD, 3300



Contact us for our  
**Jackson Tamper  
Parts Catalog**

**Unbeatable workhead rebuilds and top quality parts.**

RCR offers new and rebuilt parts and assemblies for the Jackson 6700 Tamper.

We take used OEM parts and rebuild them to like-new condition.

From workheads to jack beams to vibrators, we have shelves stocked with top-of-the-line, durable parts. Other assemblies we have in stock are folding tongues and rapid-deployment buggies. All ready to ship!

As industry veterans, we can answer any product questions you may have, make recommendations or help you troubleshoot your machine over the phone. Contact us today!



(217) 268-5110 | sales@rrcri.com | www.rrcri.com





# SPIKE PULLER ASSEMBLIES



## Give your Spike Puller a face lift with our rebuild & upgrade assemblies.

You won't recognize your puller machine with our no-nonsense, rebuilt spike puller heads.

We take used spike puller heads and build them back to their original OEM specifications using top quality components. With new, heavy-duty steel claw arms and bushings, we create an optimal, highly-durable assembly that delivers every time and is easier on your budget.

And the best part? Our rebuilt spike puller heads are always in stock and we ship out the same day!

(217) 268-5110 | [sales@rrcri.com](mailto:sales@rrcri.com) | [www.rrcri.com](http://www.rrcri.com)



# PRE-GAUGERS



**Leave no room for error with our newly engineered Pre-Gaugers.**

Our Pre-Gaugers are perfect for gangs installing new rail. They measure the distance between the rails and situate new rail exactly where it needs to be.

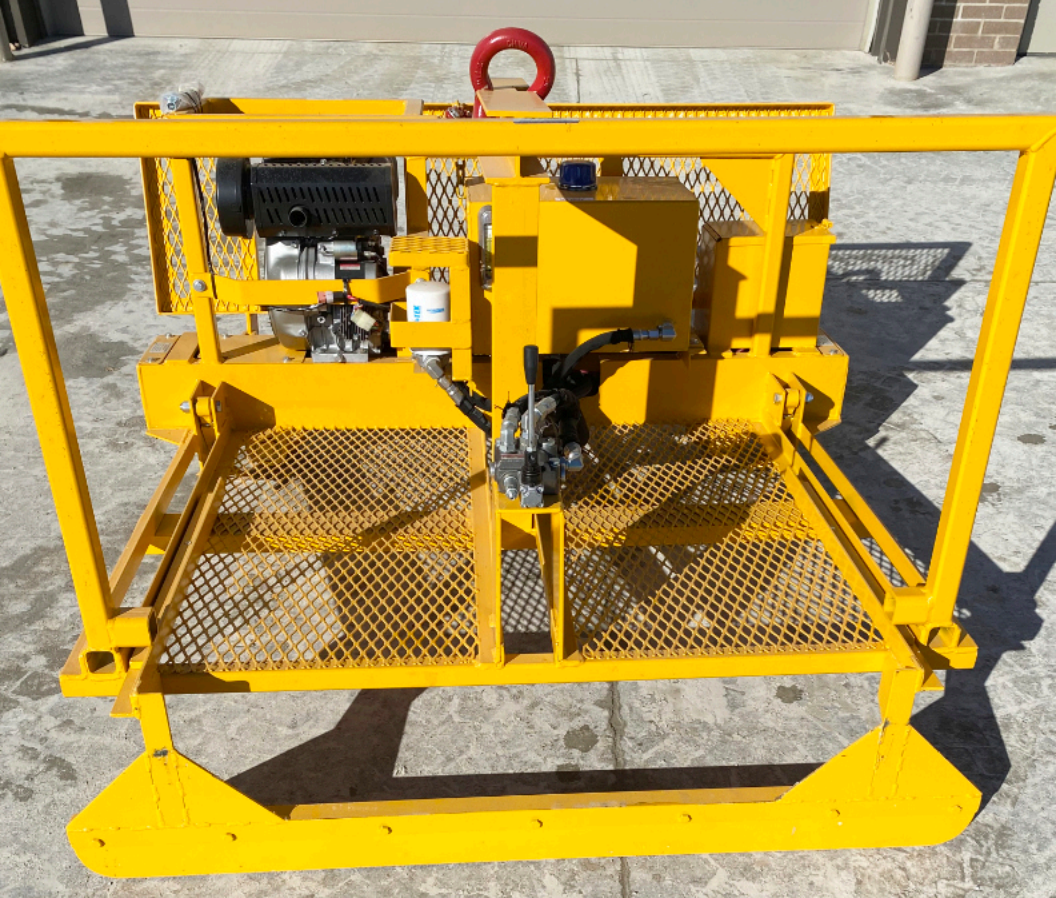
One side of this Pre-Gauger features rail wheels that ride down one side of the track. Its other side gauges the distance between the tie plates and ensures that they are precisely where they need to be. The Pre-Gauger makes sure the plates are already in position when new rail is going in.

Add an extra safety measure and make new rail installation easier with our made-from-scratch Pre-Gaugers. We have them in stock and ready to ship.

Contact us today for a quote.

(217) 268-5110 | [sales@rrcri.com](mailto:sales@rrcri.com) | [www.rrcri.com](http://www.rrcri.com)





## REMOTE CONTROL QUALITY CARTS



### **Our one-of-a-kind Quality Carts make your job easier.**

Our fully-customized Quality Cart follows behind your tie gang. Once the gang finishes replacing ties, this Quality Cart goes behind the gang and drives spikes where a spike is missing or was not driven in all the way.

Designed to hold 20,000 pounds of material, our quality cart can haul anything the job requires. You can transport anything you need to on it. Besides holding spikes, you can carry hammers to drive spikes in by hand.

To make your job even easier, we have incorporated a swing arm on the back of the cart, in which you can hook up a hydraulic spiker gun or spike remover.

We also offer the parts to keep your Quality Cart serviced and operating seamlessly. Just give us a call!

(217) 268-5110 | [sales@rrcri.com](mailto:sales@rrcri.com) | [www.rrcri.com](http://www.rrcri.com)





R00-00100 .....	141	R0-2202634-0-11 .....	44
R00-00555 .....	139	R0-2202634-0-011 .....	43, 72
R0-201052-0-05 .....	15	R0-2203017-0-01 .....	18
R0-1101325-0-09 .....	36, 64	R0-2300171-0-01 .....	141
R0-1101329-0-01S .....	36, 64	R0-2302071-0-04 .....	103
R0-1202323-0-01 .....	115	R0-2302071-0-05 .....	103
R0-1202323-0-02 .....	115	R0-2302202-0-01 .....	79
R0-1202626-0-01 .....	30	R0-2303363-0-03LHD .....	22
R0-1202627-0-01 .....	30	R0-2303363-0-04RHD .....	22
R0-1203075-0-01 .....	42	R0-2303635-0-02 .....	71
R0-1302082-0-01 .....	31, 111	R0-2303635-0-06 .....	69-70, 100
R0-1302117-0-01 .....	23	R0-2303638-0-03 .....	105
R0-1303161-0-01 .....	111	R0-2304178-0-01 .....	103
R0-1303686-0-01 .....	17	R0-2304402-0-55 .....	111
R0-1303949-0-01 .....	16	R0-2305242-0-02 .....	115
R0-1304826-0-01S .....	32	R0-2305347-0-01 .....	78
R0-1304827-0-01 .....	32	R0-2305350-0-01 .....	78
R0-1304828-0-01S .....	32	R0-2305351-0-01EX .....	78
R0-1304828-0-1S-KIT .....	28, 135	R0-2305761-0-01 .....	46
R0-1304933-0-01-KIT .....	99, 131	R0-2305761-0-01-KIT .....	123
R0-1305163-0-01 .....	112	R0-2305775-0-01 .....	42
R0-1305255-0-01 .....	112	R0-2306204-0-01 .....	99
R0-1305728-0-01 .....	44	R0-2306408-0-01 .....	79
R0-1305757-0-01 .....	46	R0-3013001-0-05 .....	45
R0-1305774-0-01 .....	42	R0-3014001-0-08 .....	101
R0-1305832-0-01 .....	30	R0-3014001-0-12 .....	45, 70
R0-1305835-0-01 .....	30	R0-3015002-0-22 .....	112
R0-1305836-0-01 .....	30	R0-3015002-0-25 .....	112
R0-1305837-0-01 .....	29	R0-3015002-0-26 .....	44
R0-1305839-0-01 .....	30	R0-3015002-0-28 .....	31
R0-1305840-0-01 .....	30	R0-3019004-0-01 .....	41
R0-1306629-0-01 .....	114	R0-3019004-0-08 .....	42
R0-1404015-0-01 .....	33	R0-3019004-0-12 .....	44
R0-1404016-0-01 .....	33	R0-3019004-0-13 .....	41
R0-1404045-1-01 .....	26	R0-3093401-0-01 .....	46
R0-1404046-1-01 .....	26	R0-3095002-0-9 .....	42
R0-1404558-0-01 .....	114	R0-3095002-0-11 .....	43
R0-1404574-1-01 .....	26	R0-3095004-0-01 .....	46
R0-1404575-1-01 .....	26	R0-3095004-0-01-KIT-L/H .....	121
R0-1405505-0-01 .....	23	R0-3095004-0-01-KIT-R/H .....	120
R0-1405839-0-01 .....	111	R0-3101019-0-33 .....	87
R0-1405839-0-01-HD .....	111	R0-3101019-0-36 .....	87
R0-1405839-0-03 .....	111	R0-3110025-0-08 .....	111
R0-1405840-0-01 .....	111	R0-3112001-0-02 .....	82
R0-1406298-0-01 .....	72	R0-3115000-0-02 .....	86
R0-1407202-0-01 .....	72, 114	R0-3119003-0-02 .....	79
R0-1500299-0-18 .....	103	R0-3137013-0-13 .....	34, 89
R0-2100706-0-01 .....	25	R0-3137013-0-14 .....	34, 89
R0-2100917-0-11 .....	102	R0-3137013-0-16 .....	84
R0-2201452-0-01 .....	98	R0-3150017-0-01 .....	78
R0-2201787-0-01 .....	115	R0-3150021-0-03 .....	82
R0-2202624-0-01 .....	96	R0-3160001-0-04 .....	86
R0-2202632-0-03 .....	139	R0-3180004-0-04 .....	72, 88
R0-2202634-0-01 .....	43	R0-3183005-0-02 .....	88

R0-3230020-0-01	88	R0-3412004-0-02	71, 139	R112482-1	112	R3401339	84
R0-3231007-0-53	84	R0-3413001-0-04	69	R112497-1	115	R3406480	90
R0-3237004-0-01	79	R0-3413003-0-15	66	R115840-1	141	R3427735	85
R0-3237004-0-02	79	R0-3413005-0-18	66	R116716-1	112	R4000334	101
R0-3307009-0-04	141	R0-3432000-0-02	67	R171463-1	78	R4000335	101
R0-3316003-0-04	60	R0-3470014-0-01	70	R172164 / CR1330	60, 82	R4007012	80, 101
R0-3317006-0-08	54, 113	R0-3470014-0-01-Kit	70, 115	R191243	69	R4007012EX	80, 101
R0-3321014-0-02	18, 54	R0-3470019-0-06	70, 98	R201170	141	R4008071	68
R0-3333010-0-08	56	R0-3470019-0-14	70, 101	R201428	35	R4008253	68
R0-3333037-0-08	55	R0-3470019-0-18	71, 95	R205217	115	R4008374	71, 86
R0-3333037-0-09	55, 58, 103	R0-3470022-0-02	68	R216059-2	18	R4011214	102
R0-3333037-0-10	56	R0-3470023-0-06	70	R217512	16	R4011386	134
R0-3333037-0-18	56	R0-3470025-0-01	69	R218045-1	112	R4011890	134
R0-3333037-0-19	56	R0-3502003-0-08	80	R220550-01	112	R4012300	93
R0-3333039-0-04	58, 113	R0-3502007-0-02	87	R222732-1	139	R4012337	93
R0-3333039-0-05	56	R0-3502050-0-01	80	R222947-1	112	R4012702	17, 54
R0-3333056-0-11	58	R0-3613000-0-01	116	R223021-1	112	R4012752	115
R0-3334011-0-03	57	R0-3624021-0-01	29	R250010-270	116	R4014888	110
R0-3334011-0-06	57	R0-3624024-0-04	86	R250250-12	141	R4015002	110
R0-3334013-0-05	63	R0-3625033-0-01	29	R251402-1	140	R4015376	82
R0-3334026-0-04	58	R0-3626005-0-02	105	R265534-KIT	129	R4015869	134
R0-3334049-0-01	67	R0-3641000-0-19	44	R350204-1-09	54	R4016221	83
R0-3334057-0-07	62	R0-3641005-0-01	111	R350886-1	114	R4016317	53
R0-3335012-0-01	36, 64	R0-3652048-0-01	105	R414260	82	R4018523	83
R0-3335018-0-02	55	R0-3652049-0-01-NS	102	R414272	83	R4019452	76
R0-3335024-0-11	63	R0-3652053-0-02	88, 97	R414273	83	R4019453	76
R0-3335024-0-12	62	R0-3652060-0-01	46	R414277	83	R4020299	59, 75
R0-3335031-0-15	62	R0-3683003-0-02	112	R414278	83	R4022370	84
R0-3336002-0-01	62	R0-33336024-0-06	61	R414442	90	R4022695	79
R0-3336024-0-06	61	R0-34710007-0-01	71	R414751	89	R4022817	76
R0-3336024-0-07	56	R02-304251	59, 75	R415597	112	R4024650	54
R0-3339031-0-01	60, 89	R4-2300189-0-01S	23	R510259	83	R4024664	54
R0-3339031-0-08RX	60, 89	R4-2400264-0-01	23	R2002555	141	R4028347	22
R0-3339041-0-13	58, 75	R0084	139	R2003175	89	R4028349	22
R0-3350000-0-05	115	R365-832	139	R2005990	77	R4028400	97
R0-3350004-0-06	60	R620-081465	53	R2006042	35, 79	R4028741	76
R0-3354005-0-04	55	R1723	142	R2006043	35	R4029264	54, 113
R0-3354005-0-09	55	R2015	125	R2006509	88	R4029520	55
R0-3360011-0-06	62	R2018	85	R2013714	83	R4031474	83
R0-3361004-0-01	72	R2019	85	R2014218	142	R04082019	82
R0-3361004-0-05	61, 113	R2020	87	R2014332	103	R4102300	93
R0-3364012-0-02	61	R2021	87	R2014998	90	R4523154	140
R0-3364033-1-01	64	R4088	112	R2055110	114	R5000347	83
R0-3364040-0-01	63	R4166	116	R02203041-0-01	43	R5001513	86
R0-3366046-0-01	61	R5110-268	33	R2460860-HOOK	52	R5004130	116
R0-3371069-0-01	71	R9254-217	95, 132	R2460860-JACK	52	R5004402	71, 86, 96, 133
R0-3371069-0-02	132	R9254-217-Complete	95, 132	R2460860-LIFT	52	R5004639	59, 75
R0-3372001-0-01	31, 52, 86	R17983	47, 64	R2460860-LINER	52	R5004649	59, 75
R0-3379004-0-01	131	R33407-01	81	R2460860-SLEW	52	R5006344	66
R0-3393001-0-05	43	R33863	99	R2460860-STOPBLOCK	134	R5006704	134
R0-3393001-0-06	43	R69427WA6	71, 96, 133	R2685110-KIT	47, 127	R5007782-Kit	24
R0-3401000-0-06	62	R96201	72, 88	R2949389	77	R5007825	58
R0-3401000-0-09	61	R100570	69, 88	R3059110	24	R5007907-Kit	24
R0-3401000-0-13	61	R105110	40, 128	R3400890	88	R5008006	80

R5011406	114	R902436104	53	RA4057Y01	63	RA0061021	33
R5011406-KIT	114	R902602670	60, 89	RA4124Y01D	54, 113	RA0061024	105
R5013800	64	RA0151Y28	64	RA4490Y03	58	RB0147WAA	139
R5015210	76	RA0215T46	105	RA4490Y07	56	RB487Y01S	18
R5018125	116	RA0219WAA	93	RA4771Y04	45, 70	RB0839XAAEX	78
R5021173	21	RA0219WAAAB	93	RA4823Y01	44	RB0841XAA	77
R5021207	35	RA0219WAB	93	RA4839Y01	59, 135	RB0881Y03	87
R5021216	35	RA0601T45	105	RA4877XAA	29	RB0941WAB	77
R5025804	54	RA0653Y01	81	RA4881Y01	29	RB0943WAA	77
R5027624EXS	15	RA0655Y02	87	RA5041WAA	139	RB0970Y18	77
R5033556	80, 101	RA704WAD	94	RA5045Y01	68	RB0970Y20	77
R5033792	89, 101, 133	RA0713Y11 / 4029715	53	RA5045Y02	68	RB1348Y02	81
R5034309	101	RA0728Y18	54	RA5287VA	22	RB1348Y03	81
R5036079	80	RA0729Y06	59, 75	RA5354V01	61	RB1657Y08	36, 47, 64
R5036083	103	RA0730Y04	59, 75	RA5553W01	44	RB1813XAB / RCL2015	83
R5038083	53	RA0900W01	96	RA5748Y01	64	RB2455X01	34
R5043252	130	RA0926Y01	88, 97	RA6030Y02	41	RB4068Y15	59, 75
R5044879	98	RA0957T45	102	RA6030Y04	46	RB4838XAA	97
R5045869	98	RA0973T22	105	RA6030Y05	41	RB5391T82	105
R5045881	70	RA0973T24	102	RA6229X01	43	RB5428YAA	131
R5046160	131	RA1070Y19	62	RA6233X01	43	RB5430YAA	131
R5047427	31	RA1070Y29	62	RA6519Y01	67	RB5432YAA	131
R5048566	83	RA1072Y01	45	RA6733Y02	43	RB5548Y08	55
R5054725	21	RA1109YAA	98	RA6819WAA	93	RB5548Y09	55
R5054725_B	21	RA1176VAAL-C	32	RA7019Y01	100	RB5705XAB	42, 52
R5054730	83-84	RA1176VAAR-C	32	RA7046WAB	94	RB5705XAF	45, 51
R5055209	21	RA1215Y07	56	RA7081Y13	68, 88	RB5708XAA	45, 51
R5055209_B	21	RA1294Y01	31, 111	RA7105Y01	34	RB5715XAA	45, 51
R5056266	98	RA1441X01	36	RA7163T66	46	RB5715XAB	45, 51
R5056896	102	RA1458V01	61	RA7347Y01	97	RB5715XAD	45, 51
R5059188	70	RA1556Y06	87	RA7367X01	95	RB5715XAE	45, 51
R5060044	70	RA1556Y08	87	RA7608VAAEX	39	RB5761XAA	23, 51
R5060788	98	RA1556Y09	87	RA7608VAKEX	39	RB5761XAA-KIT	122
R5072988LH	104	RA1556Y21	87	RA8205WAA	99	RB7036WA	43
R5073106	104	RA1593Y12	101	RA8215XAA	93	RB7036WAA	43, 51
R5073106RH	104	RA1681YAA	46	RA8235VAC	99	RB7036WAC	51
R5074799	55	RA1681YAA-KIT	123	RA8288X01	41	RB7036WAC-KIT-W/O	129
R5077564	104	RA1787Y24	76	RA8786X03	96	RB7487Y01	18
R5077565	104	RA1856T03	46	RA9091XAA	97	RB8668P31	83, 111, 116
R5090719	76	RA1856T04	41	RA9264Y06	141	RB9263Y01	80, 100
R5090720	76	RA1856T05	42	RA9264Y17	87	RB9432Y01	64
R5090721	76	RA1901YAA	71, 96, 133	RA9337WAA	43, 51	RB9529Y01	63
R5095084	76	RA1917Y01	86	RA0036276	114	RB9641WAC	114
R41053893-12V	64	RA2586Y01	42	RA0036331-KIT	124	RB9691X01-RB	110
R96810019	142	RA2634Y01	42	RA0036341	46	RB815713-KIT	122
R96810019-RB	142	RA2660P36	116	RA0041199	46	RC0046XAA	88, 97
R96810020	142	RA2803Y01	63	RA0041217	58	RC0046XAARB	97
R96810020-RB	142	RA2803Y04	62	RA0042009	100	RC0046XAB	97
R502549002	139	RA2932Y01	97	RA0043031	16, 24	RC0046XAC-N	88, 97
R900017610	59	RA3031V02C	46	RA0052012	134	RC0046XACRB	97
R900017615	59	RA3280Y01	67	RA0056019	46	RC80WAA	102
R900019801	60, 89	RA3448Y09	54	RA0056035	105	RC0584Y01	103
R900020175	60, 89	RA3651Y07	71	RA0059012	44	RC0606VAA	21
R900219602	60, 89	RA3651Y07-Kit	71, 110	RA0060021	44	RC0606VAA-R/H-EX	22

RC0606VAB-L/H .....	22	RD0393Y03 .....	65	RG0850YAA .....	32	RL41228 .....	72
RC0606VAB-L/H-EX .....	22	RD650Y04 .....	82	RG1622YAA .....	78	RL41380 .....	47
RC0607VAAEXS .....	15	RD0650Y07 .....	82	RG1622YAB .....	78	RL41380 / 17983 .....	64
RC0674Y01 .....	63	RD1009Y01 .....	100	RG1688P16 .....	88	RL41617 .....	80
RC0679Y01 .....	100	RD1009Y02 .....	100	RG2801X01 .....	35	RL42296 .....	129
RC0692X01 .....	28	RD1009Y03 .....	100	RG5509Y01 .....	35	RL410284 .....	80, 100
RC0693X01 .....	28	RD1735Y01 .....	140	RG5869Y01 .....	69, 100	RL410287 .....	78
RC0694XAA .....	28	RD2882Y01 .....	68	RG6961Y01 .....	46	RL410606 .....	72, 99
RC0694XAA-KIT .....	29, 134	RD4121Y02 .....	66	RG7721WAA .....	94	RL410848 .....	23
RC0701Y02-S .....	28	RD4176Y01 .....	60	RG7733YAA .....	101	RL410952 .....	82
RC0780VAB .....	93	RD4313Y02 .....	54	RG7897WAA .....	102	RL410954 .....	81
RC0839Y01 .....	68, 100	RD4313Y02-11 .....	54	RG7897WAA-C .....	102	RL411545 .....	29
RC0979WAF .....	77	RD4346Y01 / R4016317 .....	53	RG8093YAA .....	78	RL420159 .....	25, 52
RC0993Y01 .....	58	RD4346Y01-HST .....	53	RH0323Y01 .....	105	RL420309 .....	30
RC0993Y03 .....	56	RD4427XAA .....	100	RH403Y01 .....	101	RL420984 .....	33
RC0993Y14 .....	56	RD4441WAA .....	93	RH2247Y01 .....	63	RL421386 .....	62
RC1140Y04 .....	56	RD4664Y02-REX .....	109	RH2967Y01 .....	76	RL422283 .....	98
RC1695X01 .....	102	RD4676X02 .....	52	RH2967Y02 .....	76	RL422295 .....	129
RC2307VAA .....	17	RD4741X01 .....	67	RH2967Y03 .....	76	RL422428 .....	81
RC2339Y01 .....	17	RD4827Y01 .....	96	RH4023Y02 .....	101	RL422845 .....	66
RC3759W02 .....	61	RD5288Y01 .....	17	RH5133WAC .....	84	RL422907 .....	34, 43, 79
RC3812Y03 .....	59, 75	RD5288Y01S .....	17	RH5133WAE .....	84	RL422908 .....	34, 79
RC5363WAK .....	86	RD5869YAA .....	45	RH5133WAK .....	86	RL422909 .....	34, 43, 79
RC5696P18 .....	55	RD6020Y01 .....	54	RH5133WAS .....	83, 114	RL423012 .....	67
RC5696P61 .....	53	RD6244W01 .....	109	RH5133WAT .....	84	RL423539 .....	110
RC5881Y02 .....	54, 113	RD6328X01 .....	61, 113	RH5463XAA .....	34, 79	RL423539-R .....	110
RC6337Y01 .....	112	RD6410WAB .....	41	RH5568XAA .....	76	RL423560 .....	110
RC6341WAC .....	77	RD6931AA-HD .....	33	RH5614Y01 .....	78	RL423629 .....	68
RC6367WAB .....	77	RD6931AB-HD .....	33	RH5932VAA .....	94	RL423741 .....	72
RC6475XAA .....	97	RD6987X01 .....	46	RH5963YAA .....	34, 43, 79	RL424113 .....	69
RC6577PAA .....	28	RD6987X02 .....	46	RH5991Y01 .....	76	RL424114 .....	69
RC7376Y04 .....	54	RD7190T06 .....	41, 44	RH6204YAA .....	87	RL424128 .....	110
RC7642YAA .....	110	RD7597X01 .....	115	RH6285X01 .....	85	RL424334 .....	67
RC7781XAB .....	65	RD7603Y01 .....	111	RH6339YAB .....	84	RL424385 .....	66
RC7786XAA .....	66	RD7603Y02 .....	111	RH6752XAB .....	79	RL424440 .....	67
RC7788XAA .....	66	RD8009Y01 .....	26	RH7272WAA .....	76	RL424468 .....	70
RC8058Y14 .....	53	RD8042Y01 .....	29	RJK-215 .....	16	RL424468-Kit .....	70
RC8058Y16 .....	60, 89	RD8305Y01 .....	59, 75	RJK-215-KW .....	16	RL424870 .....	41
RC8106Y01 .....	80, 100	RD8489P01 .....	116	RJK-215-SW .....	16	RL424936 .....	42
RC8214YAA .....	62	RD8489P51 .....	58	RJK-193801 .....	42	RL425049 .....	56
RC8649Y01 .....	54	RD8489P64 .....	58, 109	RJK-197940 .....	46	RL425340 .....	69
RC8681X01 .....	97	RD8489P64-9TE1 .....	109	RJK-197940-1 .....	41	RL425341 .....	66
RC8826XASB .....	93	RD8506Y01 .....	59, 75, 109	RJK-198275 .....	42	RL425565 .....	134
RC8834WAA .....	101	RD8514Y01 .....	87	RJK-301234 .....	42	RL425984 .....	89
RC9088XAA .....	57, 133	RD9167Y01 .....	115	RJK-B6090Y02 .....	41	RL4103356 .....	71, 96, 98, 133
RC9095WAH .....	55	RE-1404809-0-01 .....	18, 88	RL40001 .....	99	RV68336-02EX .....	15
RC9101VAA .....	36, 57	RE-2010512-0-02EX .....	15	RL40008 .....	99	RW68283-03-REX .....	25
RC9249Y05 .....	55	RE-2100706-0-01-K .....	27, 126	RL40070 .....	26	RW68348L .....	105, 140
RC9286Y01 .....	78	RF01796 .....	46	RL40072 .....	26	RW68348R .....	105, 140
RC9402Y01-KIT .....	32, 131	RF026061 .....	60, 89	RL40525 .....	26	RW683484LEX .....	105, 140
RC9678Y12 .....	82	RF040116 .....	81	RL40603 .....	27, 64	RW683484REX .....	105, 140
RC9785X15 .....	89	RF040119 .....	81	RL40624 .....	58, 86	RW690833-02CW .....	110
RD0393Y01 .....	65	RG0686XAD .....	57, 133	RL40805 .....	81	RX68297U .....	23-24, 51
RD0393Y02 .....	65	RG741Y03 .....	77	RL40930-P .....	114	RX68297U-KIT .....	119

RX683361 .....	52	RZ687106 .....	131
RX685831 .....	102	RZ687107 .....	131
RX710126 .....	30	RZ688521 .....	16, 24
RX754110ACEX .....	114	RZ688595 .....	34
RX763526-001 .....	102	RZ689173 .....	25
RX763526-003 .....	102	RZ750036 .....	103
RX768469-004 .....	116	RZ750036-KIT .....	103, 133
RX768469-022 .....	116	RZ750057 .....	103
RX7683628 .....	25, 51	RZ752197 .....	105
RY10047 .....	29	RZ752197-KIT .....	124
RY54559-001S .....	112	RZ752201 .....	100
RY56701A .....	18	RZ752202-0-001 .....	96
RY68375-01 .....	34	RZ752500-041 .....	71, 96, 133
RY104606A .....	18	RZ754020A .....	80
RY683439 .....	140	RZ762124-001 .....	96
RY683440 .....	140	RZ765375-001 .....	44
RY683655 .....	141	RZ766673-001 .....	27
RY684121B .....	80	RZ766844-002 .....	28
RY684448-01 .....	23	RZ767929-002 .....	41
RY684448-01-KIT .....	119	RZ780309Z .....	69
RY690486 .....	101	RZZ820EX .....	86
RY691404-01A .....	72		
RY710945 .....	67		
RY711173-02A .....	72		
RY766772Y .....	27		
RY766898-001 .....	70		
RY767203-001 .....	23, 70		
RY767203-001-KIT .....	127		
RY767203-001ASY .....	23		
RZ6206 .....	69		
RZ54903-001 .....	141		
RZ62175 .....	99		
RZ65379-001 .....	46		
RZ68287 .....	25		
RZ68287-KIT .....	125		
RZ68288-01 .....	25		
RZ68370 .....	33		
RZ68372 .....	33		
RZ68402-02 .....	26		
RZ68439-01 .....	25, 27		
RZ68440-02 .....	16		
RZ68440-02-KIT .....	123		
RZ68440-02S .....	25		
RZ68440-02S-KIT .....	130		
RZ76802-001 .....	126		
RZ682327 .....	33		
RZ682674 .....	27		
RZ683432 .....	141		
RZ683433 .....	141		
RZ683435 .....	141		
RZ683436 .....	141		
RZ683488 .....	141		
RZ683490 .....	42		
RZ685917 .....	99		







## REAL SOLUTIONS FOR RAIL MAINTENANCE OF WAY



(217) 268-5110 | [sales@rrcri.com](mailto:sales@rrcri.com)

[www.rrcri.com](http://www.rrcri.com)